

# Rolfe East



## Manor Way, WD6

£225,000

- Superb Location
- Turn Key apartment
- High Spec Interior
- Unrivalled Investment

## Viewings

Viewings by arrangement only.  
Call 020 8567 2242 to make an appointment.

Energy Efficiency Rating		
	Current	Potential
<i>Very energy efficient - lower running costs</i>		
(92 plus) A		
(81-91) B	84	84
(69-80) C		
(55-68) D		
(39-54) E		
(21-38) F		
(1-20) G		
<i>Not energy efficient - higher running costs</i>		
England & Wales	EU Directive 2002/91/EC	

## Council Tax Band

C



Being Sold via Secure Sale online bidding. Terms & Conditions apply. Starting Bid £240,000.

This property will be legally prepared enabling any interested buyer to secure the property immediately once their bid/offer has been accepted. Ultimately a transparent process which provides speed, security and certainty for all parties.

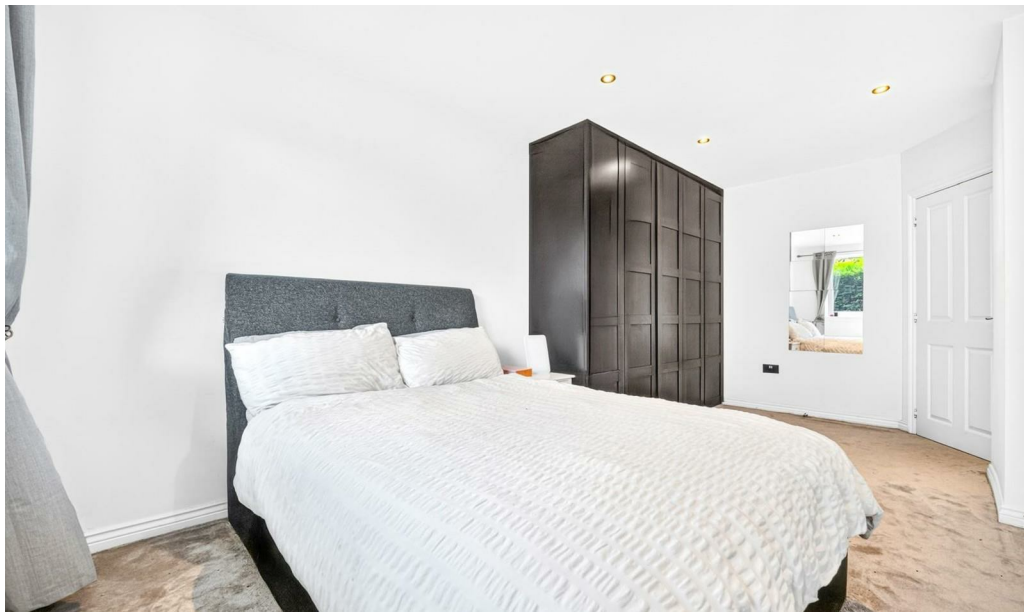
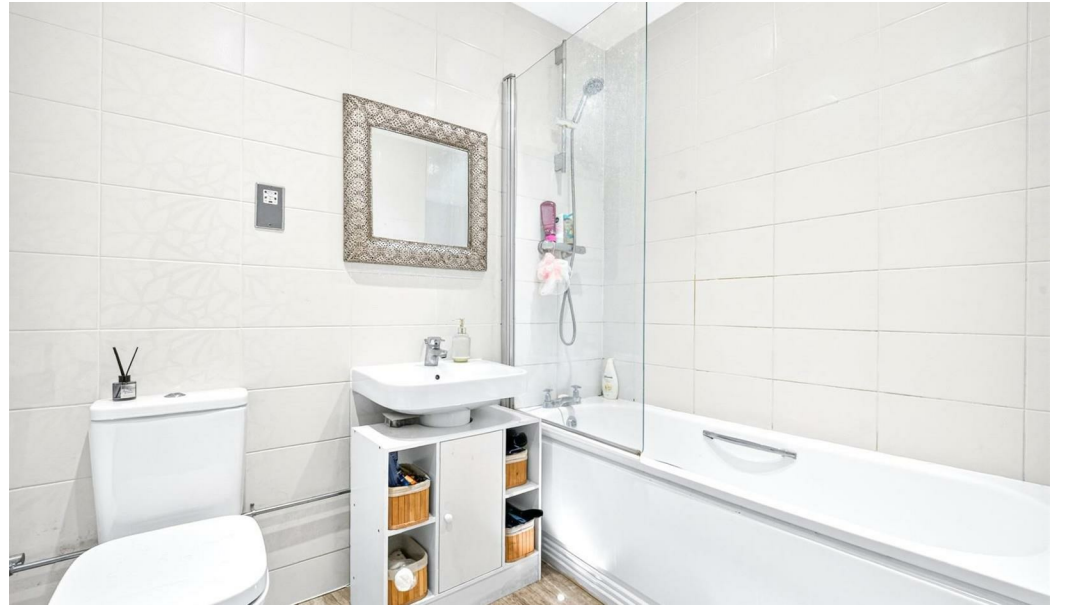
A chance to acquire this superbly presented one double bed roomed apartment in this sought after new development in Boreham Wood.

The property is a great investment vehicle for those wanting high calibre tenants and a superb, yield, or first time buyers wishing to get onto the property ladder.

With high specification kitchen and bathroom this is a turn key apartment in the true sense of the word.

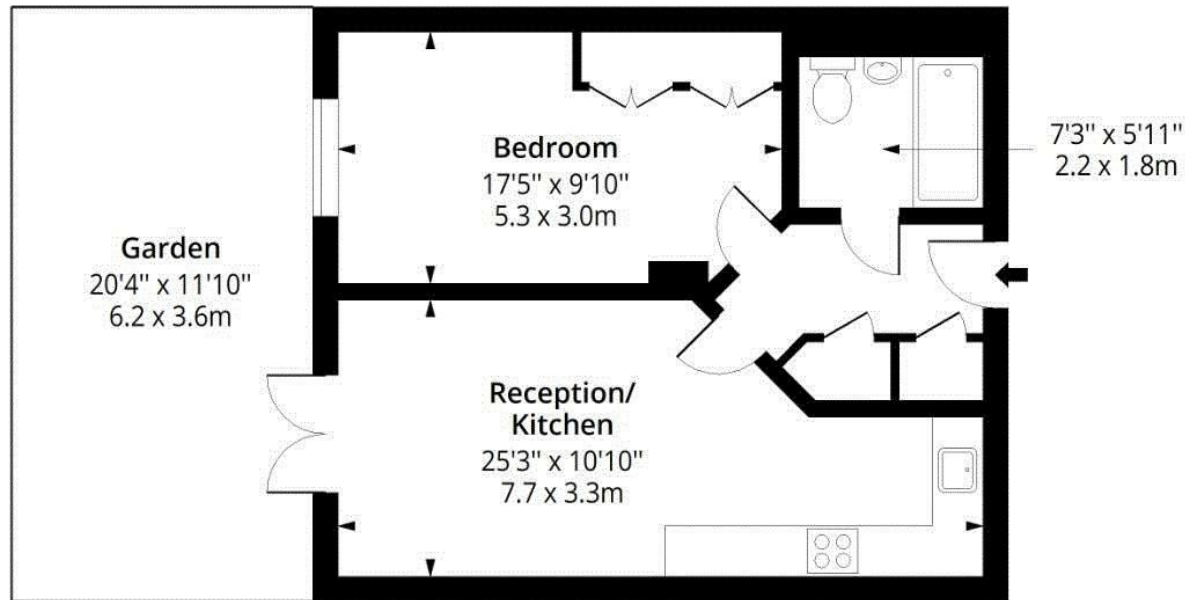
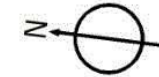






# Gemini Park Manor WD6

Approx. Gross Internal Area 531 Sq Ft - 49.33 Sq M



## Ground Floor

Floor Area 531 Sq Ft - 49.33 Sq M



Measured according to RICS IPMS2. Floor plan is for illustrative purposes only and is not to scale. Every attempt has been made to ensure the accuracy of the floor plan shown, however all measurements, fixtures, fittings and data shown are an approximate interpretation for illustrative purposes only. 1 sq m = 10.76 sq feet.

lpaplus.com

Date: 18/6/2026