

Rolfe East



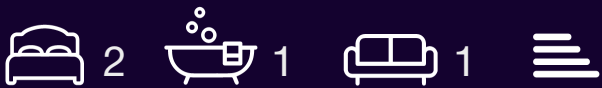
Greystoke Gardens, Ealing, W5 1EP

£400,000

- Two double bedrooms
- Modernisation required
- Well kept communal gardens
- Garage in adjacent block
- Second / top floor flat
- No upper chain
- Double glazed windows
- EPC rating: D / council tax band: D

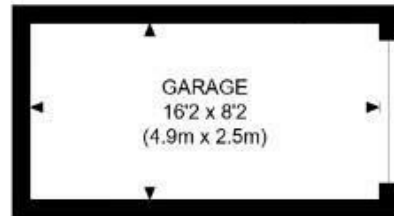
Greystoke Gardens, Ealing W5 1EP

A bright and spacious two double bedroom top floor flat in this well kept purpose built block. Internally the property is dated and requires a complete refurbishment.

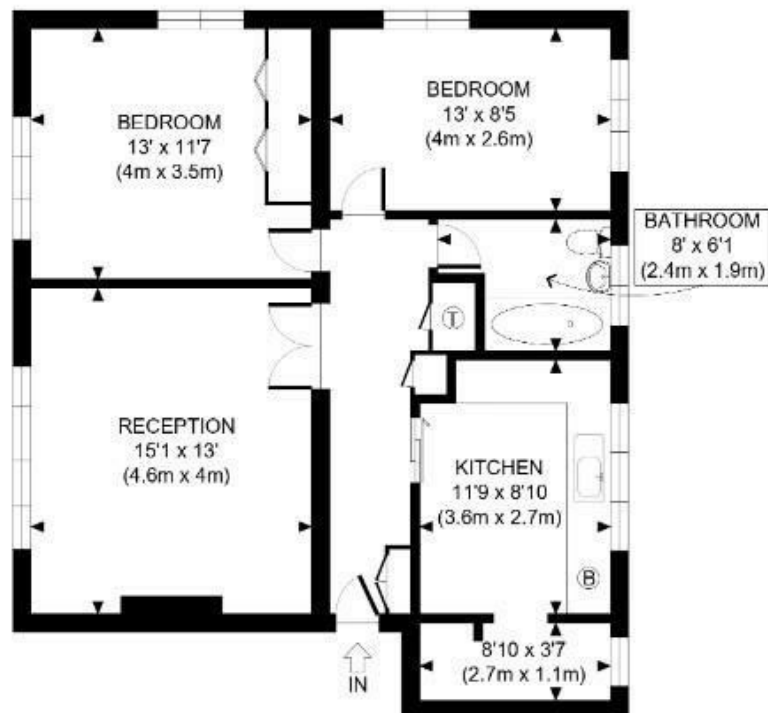


Council Tax Band: D





GROUND FLOOR

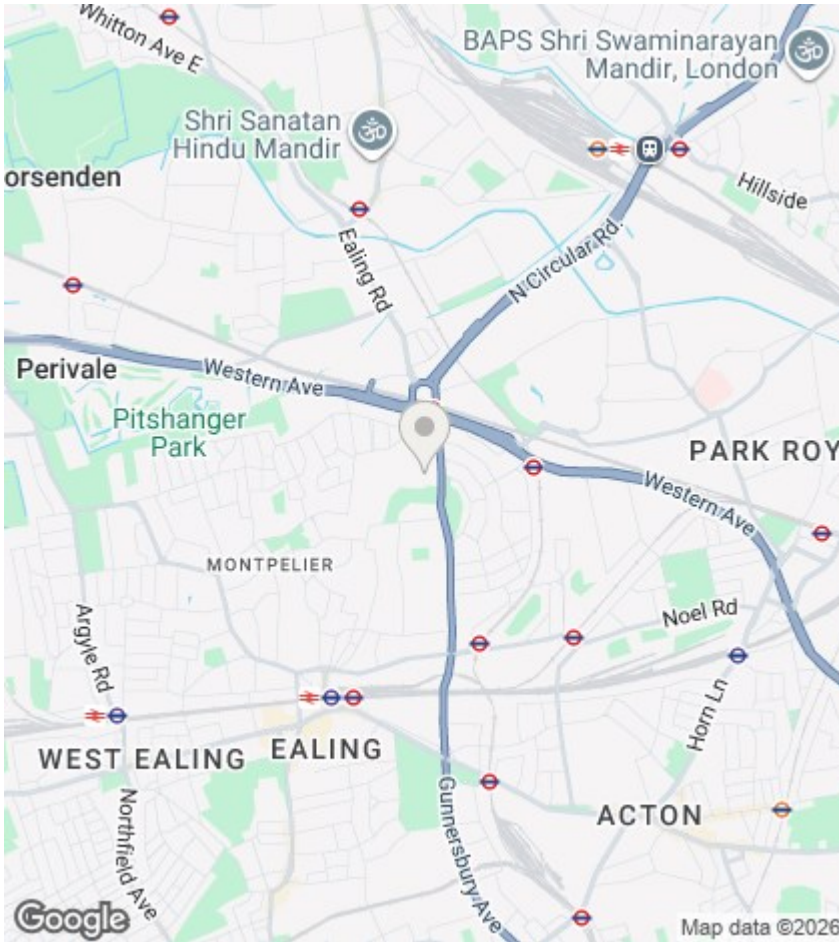


SECOND FLOOR
GROSS INTERNAL
FLOOR AREA 762 SQ FT

APPROX. GROSS INTERNAL FLOOR AREA: 762 SQ FT/ 71 SQM

PROPERTY PHOTO PLANS.CO.UK
ONE STOP SHOP FOR PROPERTY MARKETING

This plan is for illustrative purposes only and should be used as such by any prospective client. Whilst every attempt has been made to ensure the accuracy of the Floor Plan contained here, measurements of the doors, windows, rooms and any other items are approximate and no responsibility is taken for any errors, omissions, or misstatement. The services, systems and appliances shown have not been tested and no guarantee as to the operability or efficiency can be given.



Directions

Viewings

Viewings by arrangement only. Call 020 8567 2242 to make an appointment.

EPC Rating:

Energy Efficiency Rating		Current	Potential
Very energy efficient - lower running costs			
(92 plus) A			
(81-91) B			
(69-80) C			
(55-68) D			
(39-54) E			
(21-38) F			
(1-20) G			
Not energy efficient - higher running costs			
England & Wales	EU Directive 2002/91/EC		