

Rolfe East



Somerset Road, Ealing, W13 9PB

£890,000

- a collection of elegant residences located a few steps away from the leafy Walpole and Lammas parks in West Ealing
- Opulent fixtures and wood flooring throughout
- Prime location
- Modern design

18-19 The Mall, Ealing, W5 2PJ
020 8567 2242

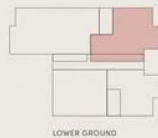
ealing@rolfe-east.com
<https://www.rolfe-east.com/>

DARGLOBAL

BUILDING A
LOWER GROUND
GROUND FLOOR

APT No. A.1
3-BEDROOMS DUPLEX

1,258 SQ FT / 116.9 SQ M
EXCLUDING TERRACE



Disclaimer: All pictures, plans, layouts, information, data and details included in this brochure are illustrative only and may change at any time up to the final 'as built' status in accordance with final designs of the project, regulatory approvals and planning permissions. All dimensions and interior finishes such as wallpapers, blinds/curtains, furniture, electronics, white goods, carpets, hard and soft landscaping, pavements, terraces, grills, swimming pools and other elements displayed in the brochure, or within the above apartment or between the plot boundary and the unit, are not part of the unit and are shown for illustrative purposes only.



Viewings

Viewings by arrangement only.
Call 020 8567 2242 to make an appointment.

Council Tax Band

New Build

EPC Rating:

C

