

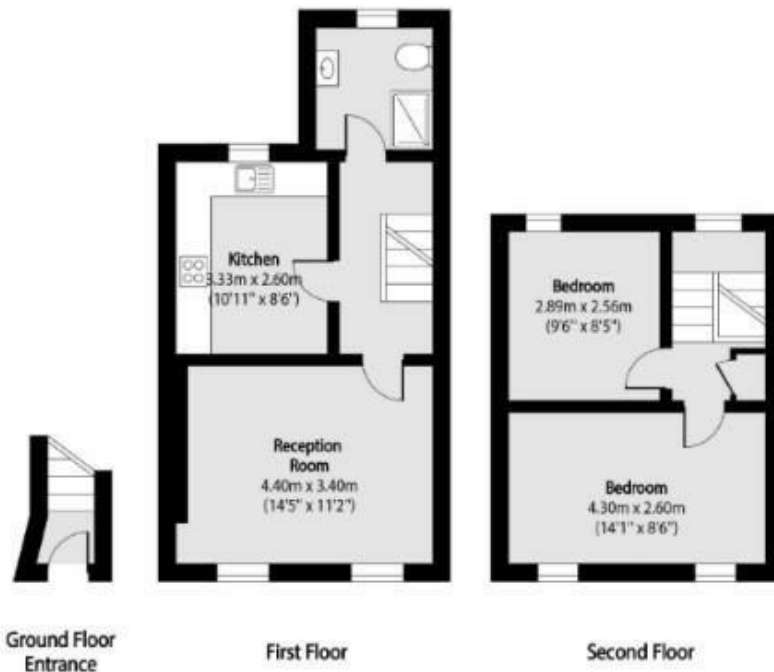
Rolfe East



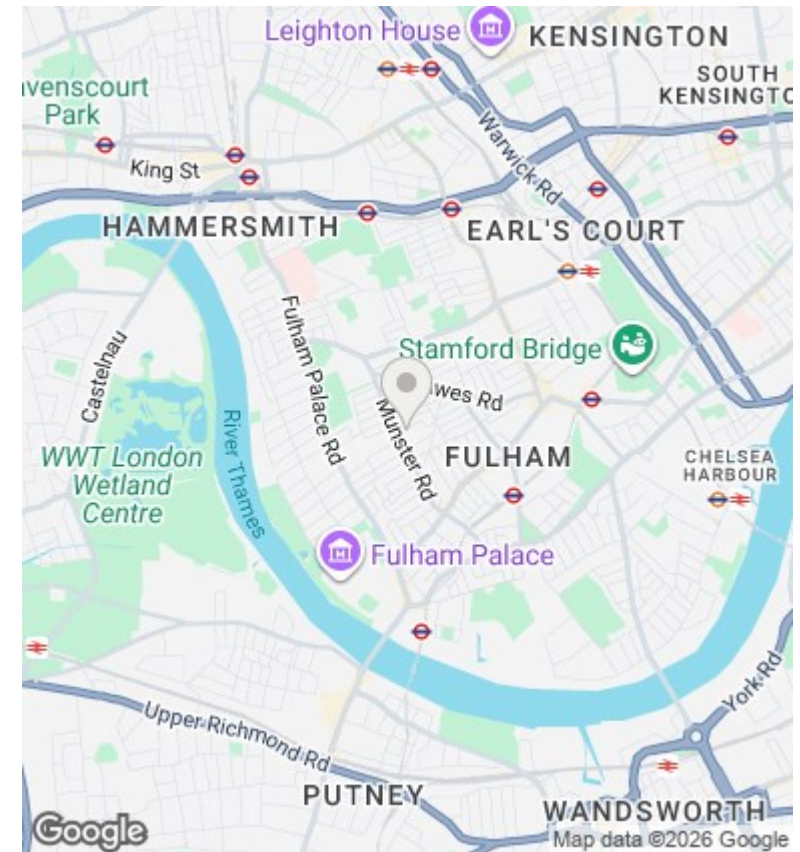
Kilmaine Road, London, SW6 7JU

£3,250 Per Month

- Available in July
- Sharer Friendly
- Unfurnished
- Duplex Apartment



Total area (approx): 61.64 sq m (663 sq. ft)



Directions

Viewings

Viewings by arrangement only. Call 020 8993 7755 to make an appointment.

Council Tax Band

E

EPC Rating:

C

Energy Efficiency Rating		
	Current	Potential
Very energy efficient - lower running costs		
(92 plus) A		
(81-91) B		
(69-80) C	74	77
(55-68) D		
(39-54) E		
(21-38) F		
(1-20) G		
Not energy efficient - higher running costs		
England & Wales	EU Directive 2002/91/EC	