

# Rolfe East



Hathaway Gardens, West Ealing, W13 0DH

£1,950 pcm

- Two double bedrooms
- Excellent condition
- Double glazing and gas central heating
- Available now
- First floor maisonette
- Private rear gardens
- Unfurnished
- EPC rating: C / council tax band: D



# 42 Hathaway Gardens, West Ealing W13 0DH

Offered in excellent condition and just minutes from Castlebar Park station is this two double bedroom first floor maisonette with private garden. Featuring a newly installed kitchen and bathroom the property is available to move into now and is unfurnished.

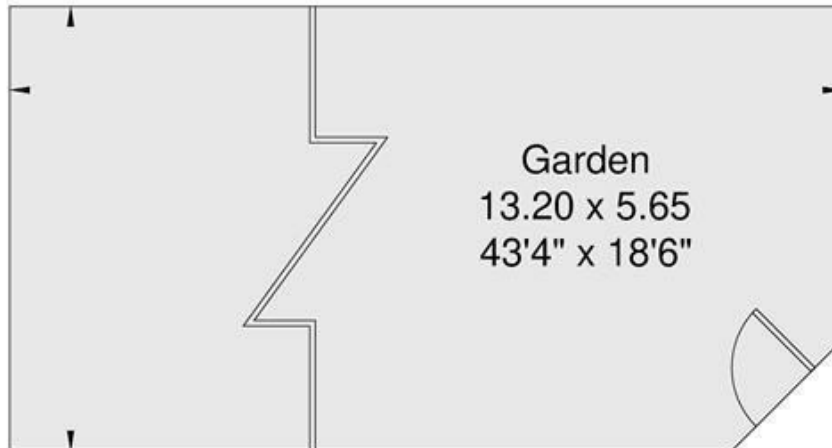


Council Tax Band: D

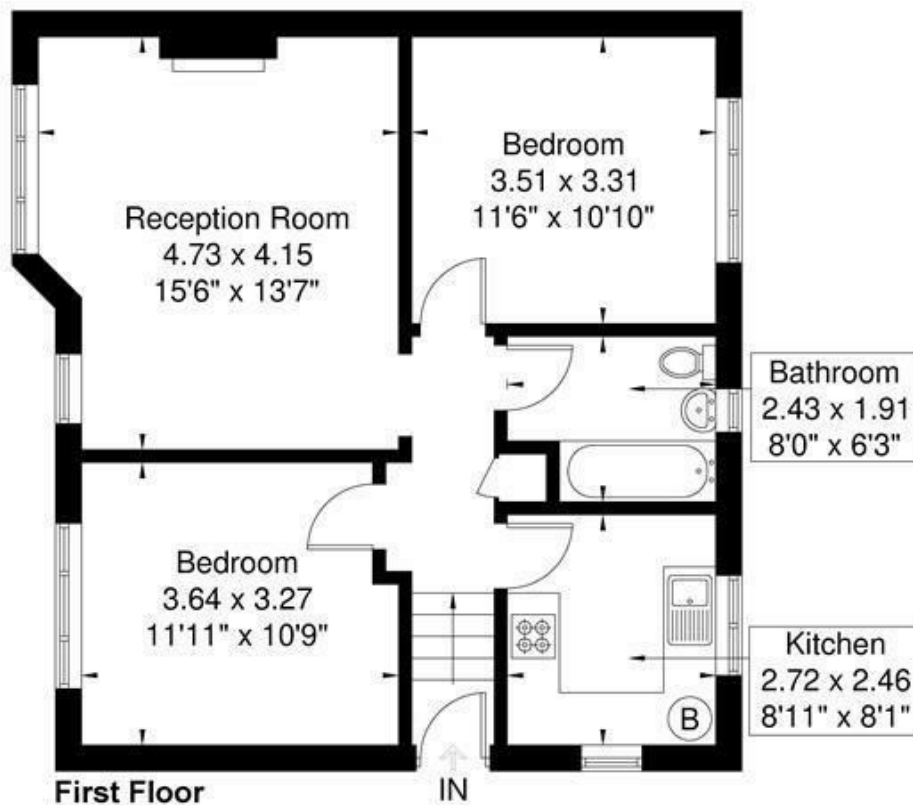


# Hathaway Gardens

Approximate Gross Internal Area = 60.8 sq m / 654 sq ft

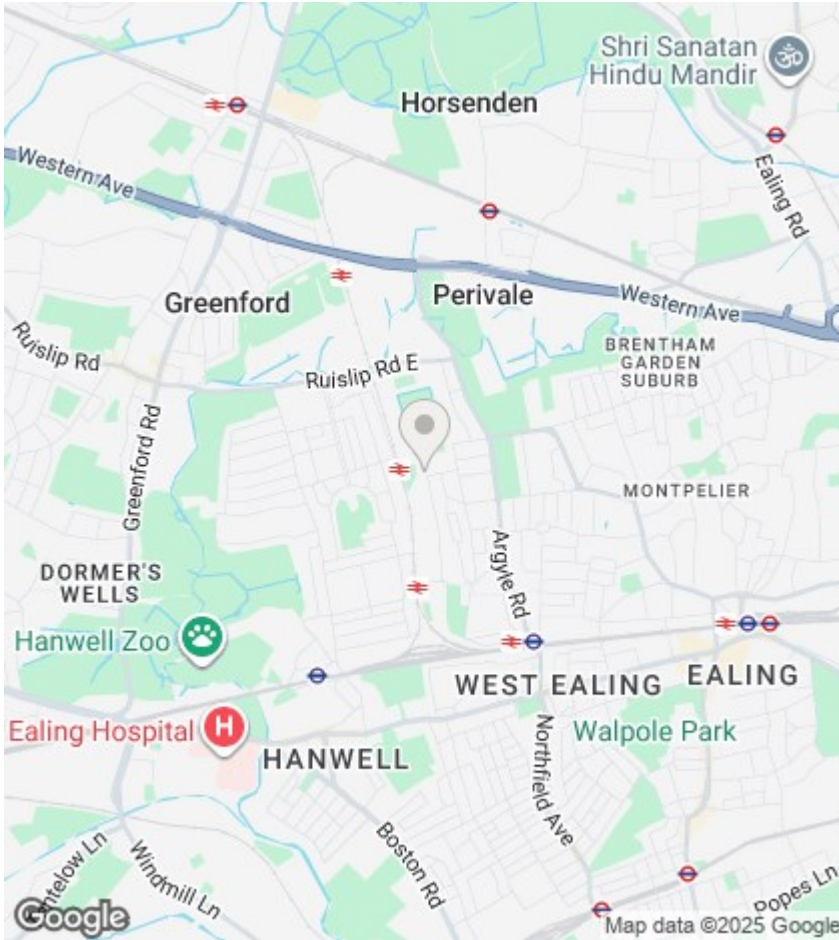


(Not Shown In Actual  
Location / Orientation)



Although every attempt has been made to ensure accuracy, all measurements are approximate.  
The floorplan is for illustrative purposes only and not to scale.

© www.perspective.co.uk



## Directions

## Viewings

Viewings by arrangement only. Call 020 8840 7707 to make an appointment.

## EPC Rating:

C

Energy Efficiency Rating		Current	Potential
Very energy efficient - lower running costs			
(92 plus) A			
(81-91) B			
(69-80) C		69	74
(55-68) D			
(39-54) E			
(21-38) F			
(1-20) G			
Not energy efficient - higher running costs			
England & Wales		EU Directive 2002/91/EC	