

Rolfe East



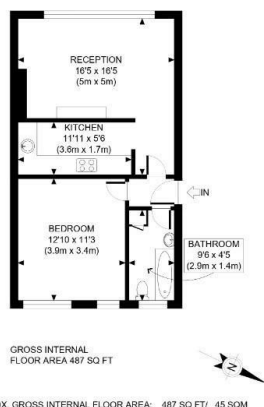
Grange Park, Ealing, W5 3PR

£1,500

- One double bedroom
- Double glazing and gas central heating
- Available from 8th September
- Second floor flat
- Furnished
- EPC rating: C / council tax band: C
- Purpose built
- 13 Minutes walk to Ealing Broadway Station

18-19 The Mall, Ealing, W5 2PJ
020 8840 7707

ealinglettings@rolfe-east.com
<https://www.rolfe-east.com/>



Rolfe East

This plan is for illustrative purposes only and should be used as such by any prospective client. Whilst every attempt has been made to ensure the accuracy of the Floor Plan contained here, measurements of the doors, windows, rooms and any other items are approximate and no responsibility is taken for any errors, omissions, or misstatement. The services, systems and appliances shown have not been tested and no guarantee as to the operability or efficiency can be given.

PROPERTY PHOTO PLANS

Directions

Viewings

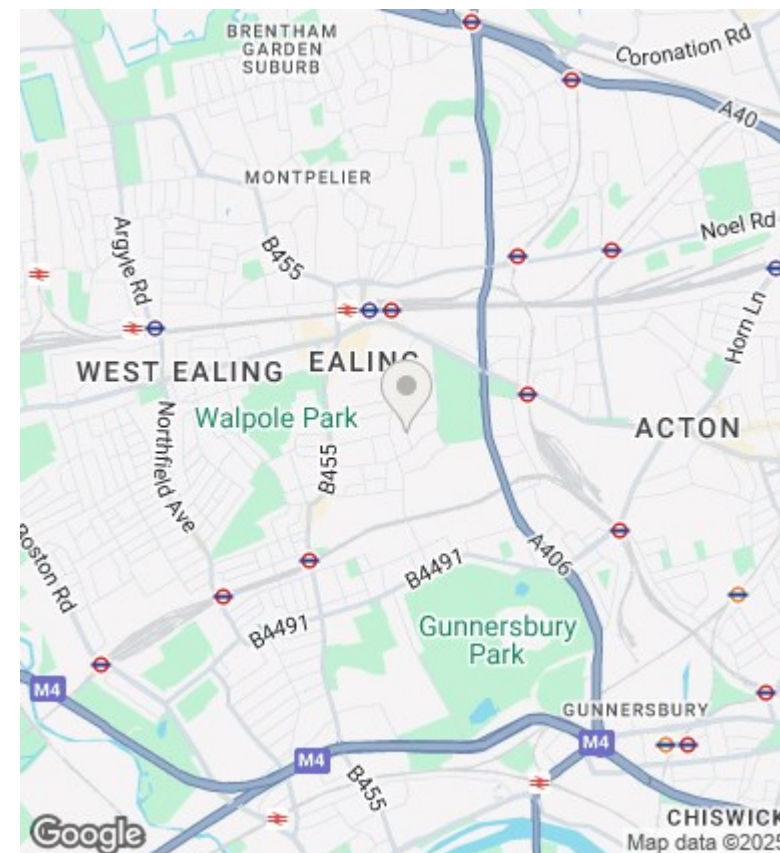
Viewings by arrangement only. Call 020 8840 7707 to make an appointment.

Council Tax Band

C

EPC Rating:

C



Energy Efficiency Rating		
	Current	Potential
Very energy efficient - lower running costs		
(92 plus) A		
(81-91) B		
(69-80) C	69	78
(55-68) D		
(39-54) E		
(21-38) F		
(1-20) G		
Not energy efficient - higher running costs		
England & Wales	EU Directive 2002/91/EC	