

# Rolfe East



Cleveley Crescent, Ealing, W5 1DZ

£2,790

- Extended Three bedroom
- Two reception rooms
- Double glazed windows and gas central heating
- Available now
- Semi detached family home
- Two bath/shower rooms
- Part furnished / unfurnished
- EPC rating: C/ council tax band: E



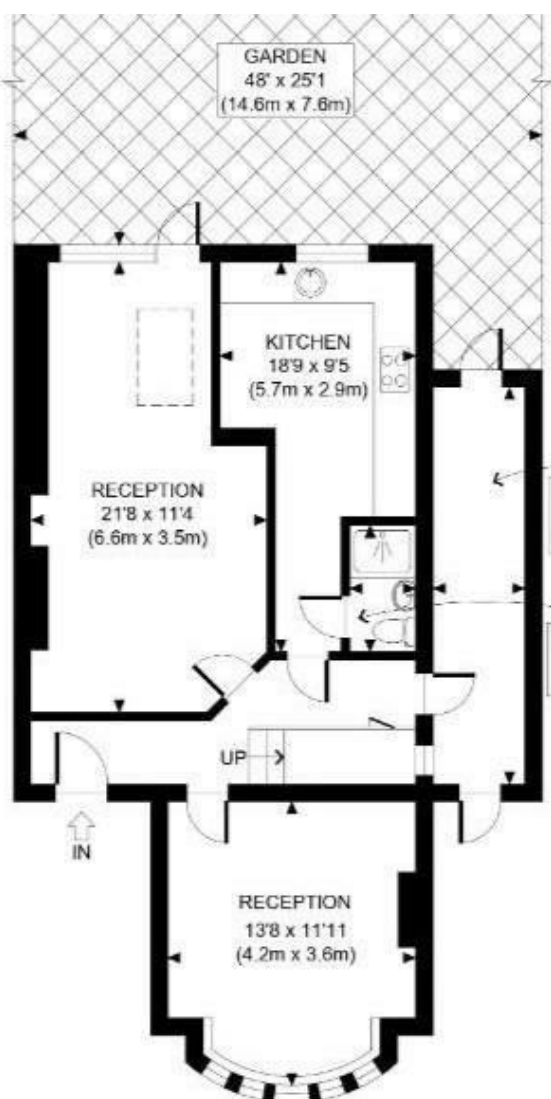
# 99 Cleveley Crescent, Ealing W5 1DZ

An extended three bedroom halls adjoining semi detached family home on this popular residential road close to Hanger Lane and Park Royal Underground stations. The property offers two large receptions, separate kitchen/breakfast room, ground floor shower room, first floor three bedrooms and family bathroom, separate WC. The property is available part furnished/unfurnished and is available now.

 3  2  2  C

Council Tax Band: E



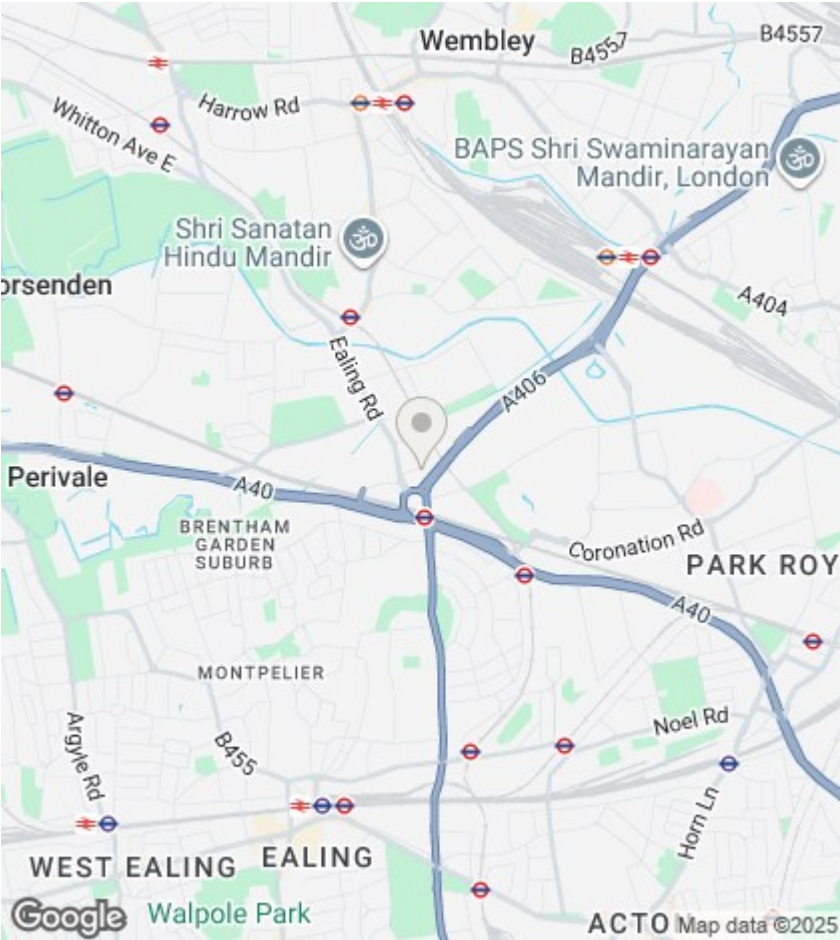


GROUND FLOOR  
GROSS INTERNAL  
FLOOR AREA 722 SQ FT



FIRST FLOOR  
GROSS INTERNAL  
FLOOR AREA 506 SQ FT





Directions

Viewings

Viewings by arrangement only. Call 020 8840 7707 to make an appointment.

EPC Rating:

C

Energy Efficiency Rating		
	Current	Potential
Very energy efficient - lower running costs		
(92 plus) A		
(81-91) B		
(69-80) C	71	83
(55-68) D		
(39-54) E		
(21-38) F		
(1-20) G		
Not energy efficient - higher running costs		
England & Wales	EU Directive 2002/91/EC	