

Rolfe East



Boston Road, Hanwell, W7 2DG

£28,000 Per Annum

- NO BUSINESS PREMIUM
- Available Now
- Superb Location
- High Specification Finish
- E Class

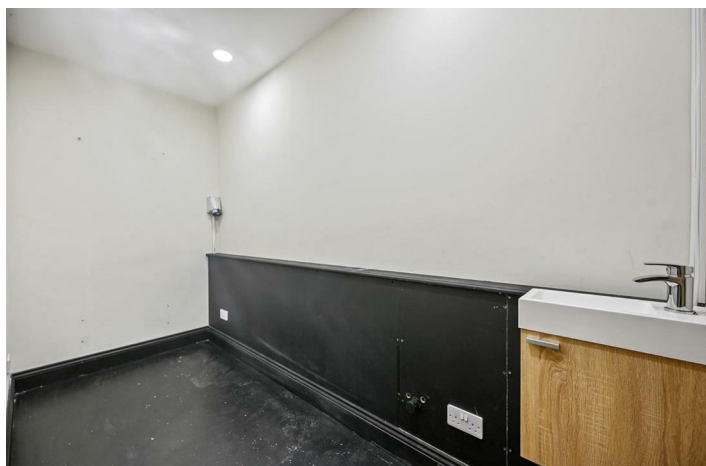
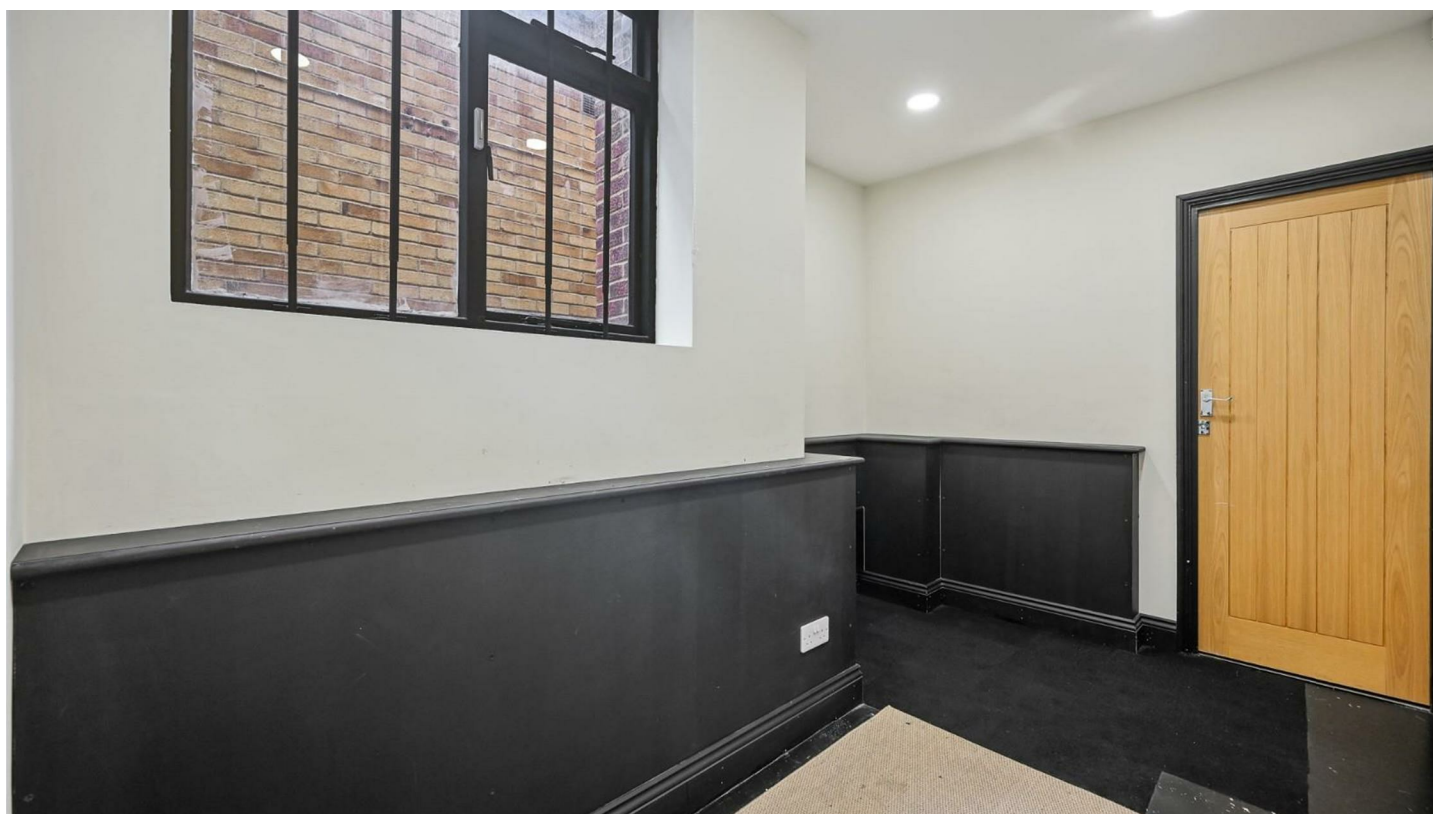
Boston Parade Boston Road, Hanwell W7 2DG

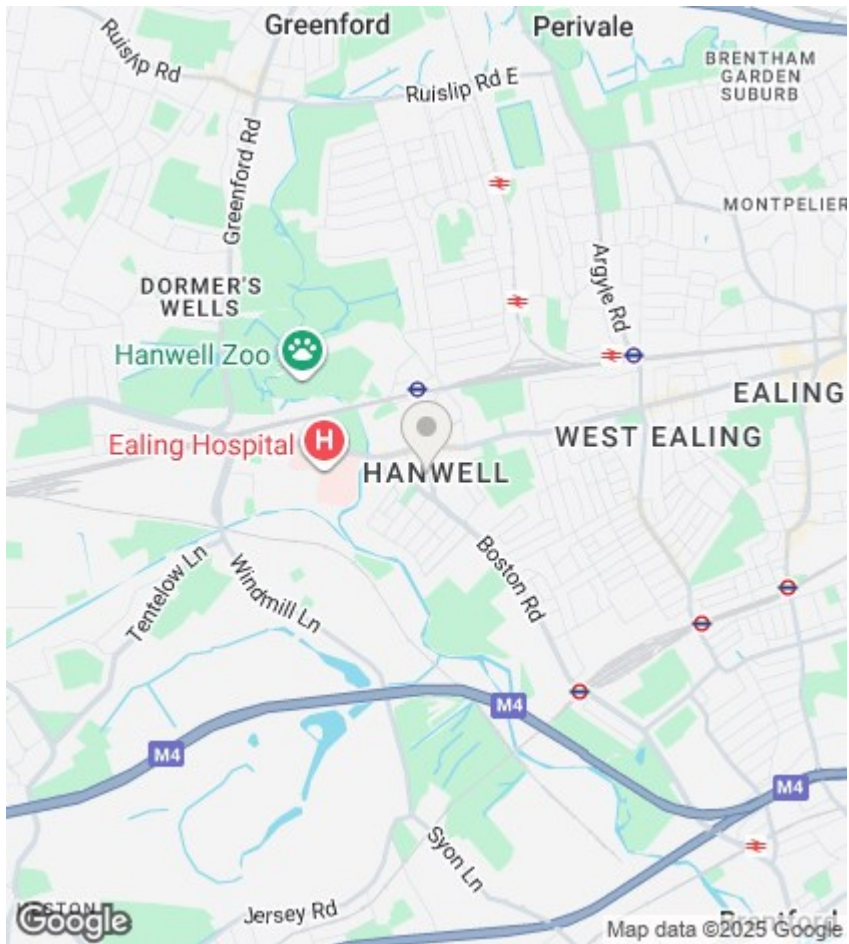
A leasehold shop to rent, in excellent condition - a former nail bar and beauty salon, this rarely available unit offers spacious shopfront exposure, with a high specification finish, on this prominent parade. Classification E business - NO PREMIUM.

Superb location within a 2 min walk of Piccadilly Line Tube. Call Rolfe East on 0208 566 0288 for a viewing.



Council Tax Band:





Directions

Viewings

Viewings by arrangement only. Call 020 8566 0288 to make an appointment.

EPC Rating:

Energy Efficiency Rating		
	Current	Potential
Very energy efficient - lower running costs		
(92 plus) A		
(81-91) B		
(69-80) C		
(55-68) D		
(39-54) E		
(21-38) F		
(1-20) G		
Not energy efficient - higher running costs		
England & Wales	EU Directive 2002/91/EC	

