

Rolfe East



Boston Road, Hanwell, W7 2DG

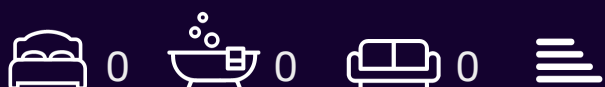
£28,000 Per Annum

- NO BUSINESS PREMIUM
- Available Now
- Superb Location
- High Specification Finish
- E Class

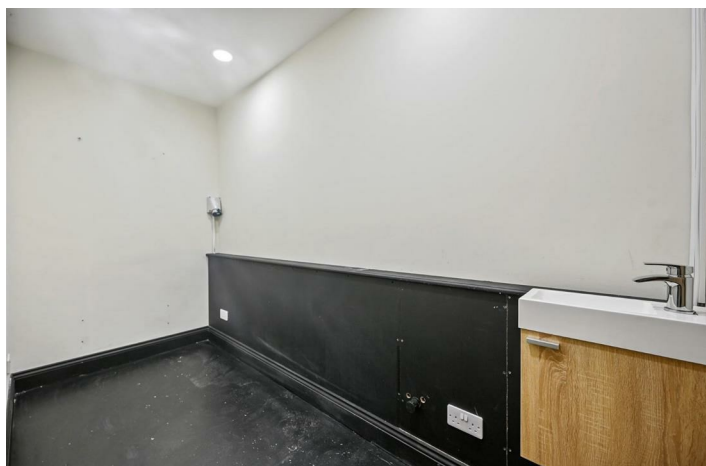
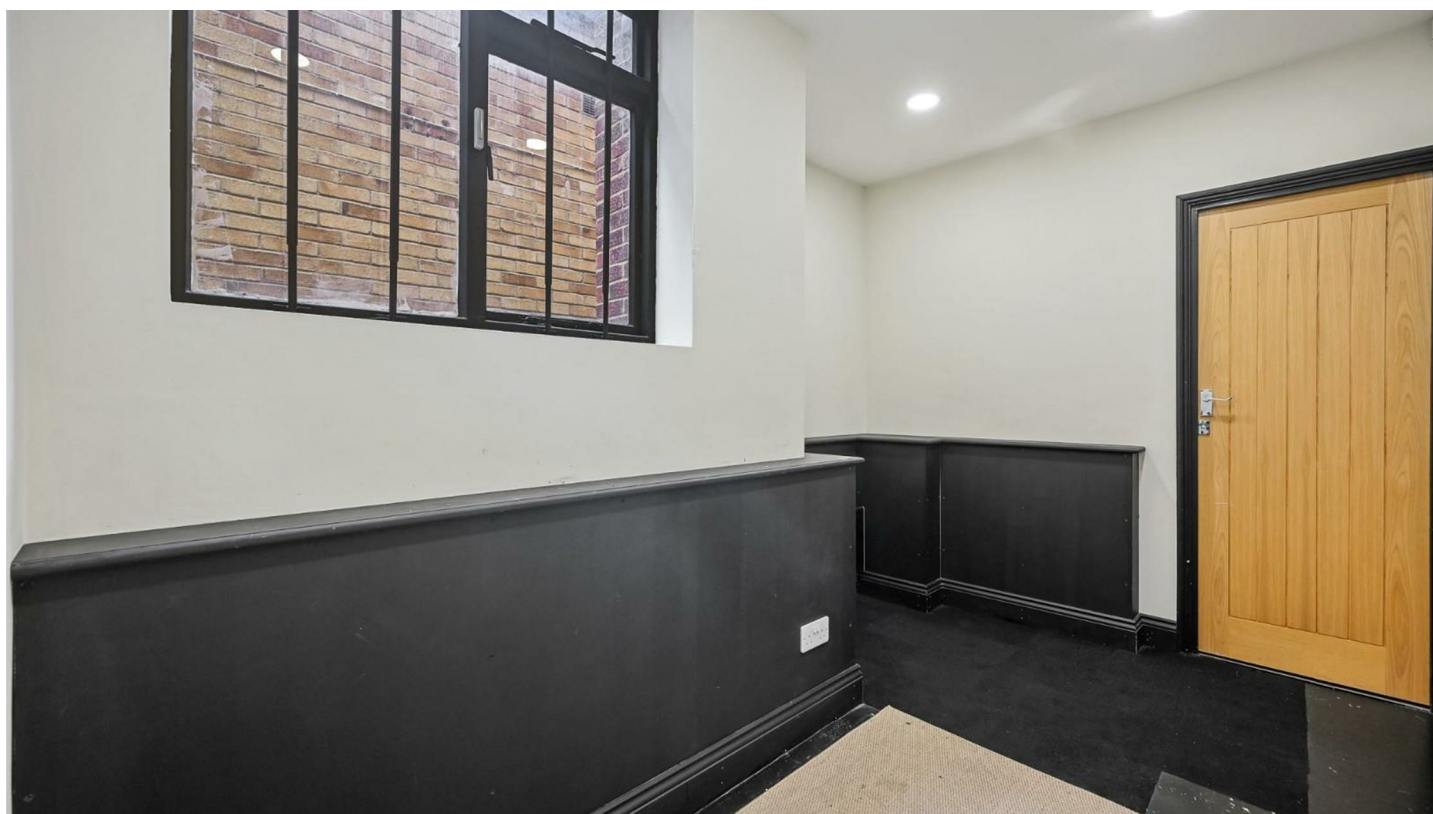
Boston Parade Boston Road, Hanwell W7 2DG

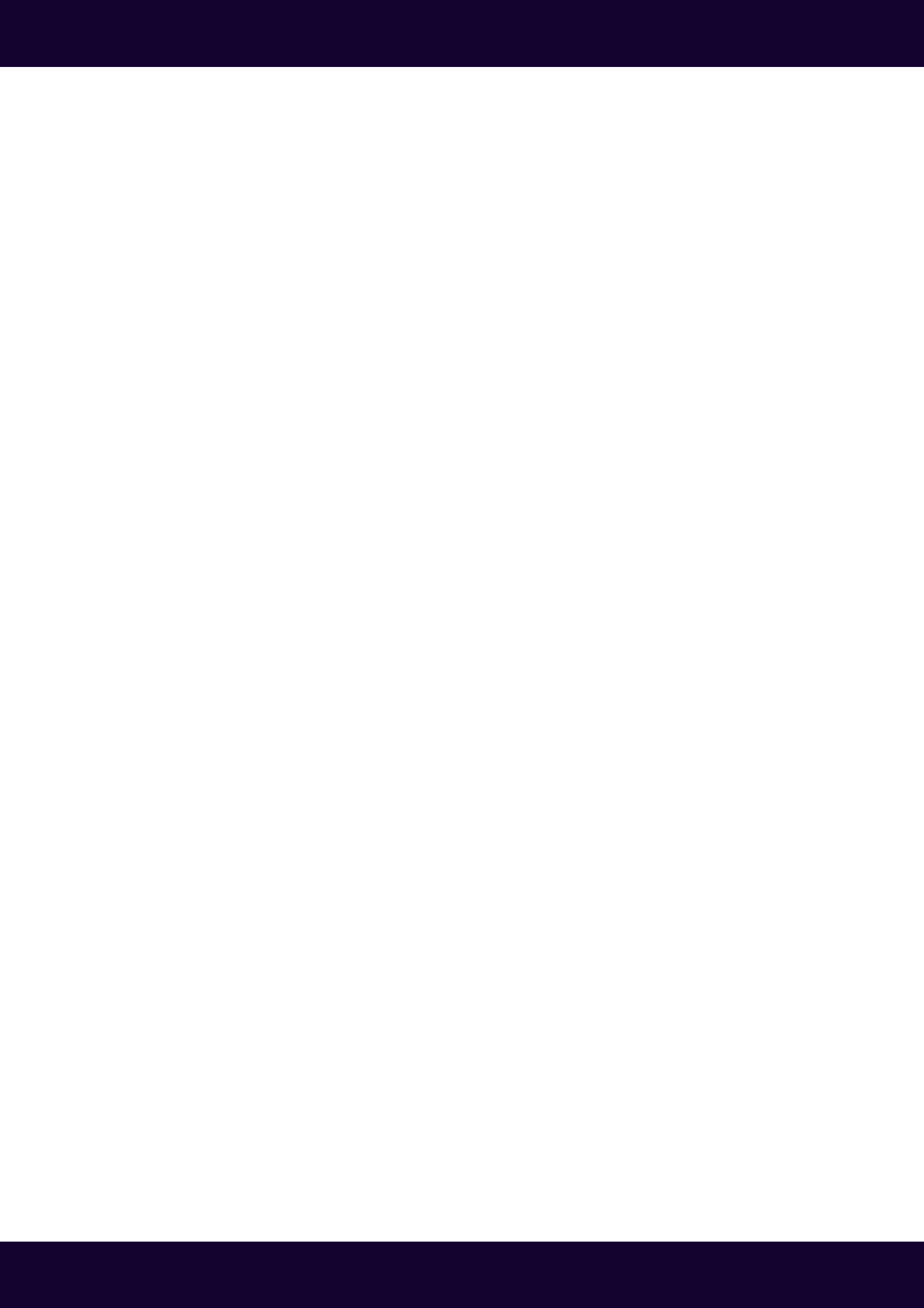
A leasehold shop to rent, in excellent condition - a former nail bar and beauty salon, this rarely available unit offers spacious shopfront exposure, with a high specification finish, on this prominent parade. Classification E business - NO PREMIUM.

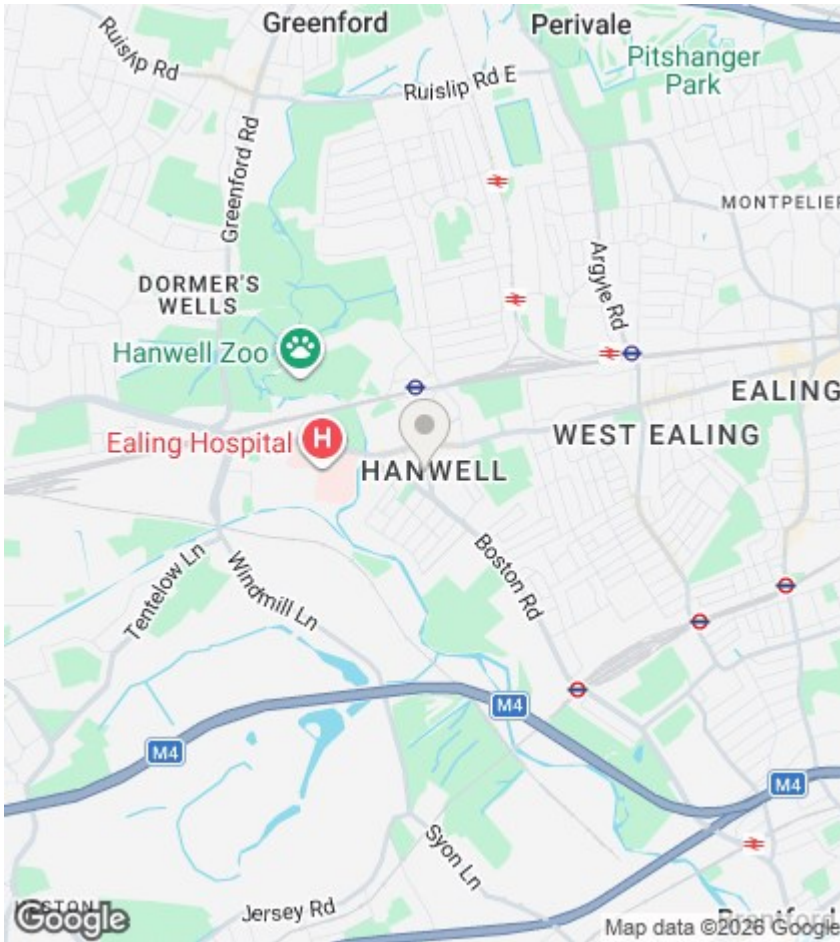
Superb location within a 2 min walk of Piccadilly Line Tube. Call Rolfe East on 0208 566 0288 for a viewing.



Council Tax Band:







Directions

Viewings

Viewings by arrangement only. Call 020 8566 0288 to make an appointment.

EPC Rating:

Energy Efficiency Rating		Current	Potential
Very energy efficient - lower running costs			
(92 plus) A			
(81-91) B			
(69-80) C			
(55-68) D			
(39-54) E			
(21-38) F			
(1-20) G			
Not energy efficient - higher running costs			
England & Wales		EU Directive 2002/91/EC	

