

Rolfe East



South Ealing Road, London, W5 4QA

£12,000

- Spacious commercial unit in the centre of South Ealing Road
- Water and electricity bills included
- Great opportunity for all businesses
- No premium

16 South Ealing Road, London W5 4QA

Spacious commercial unit, close to transport links, only a couple of minute's walk from from St Marys Church and Lamma's Park.

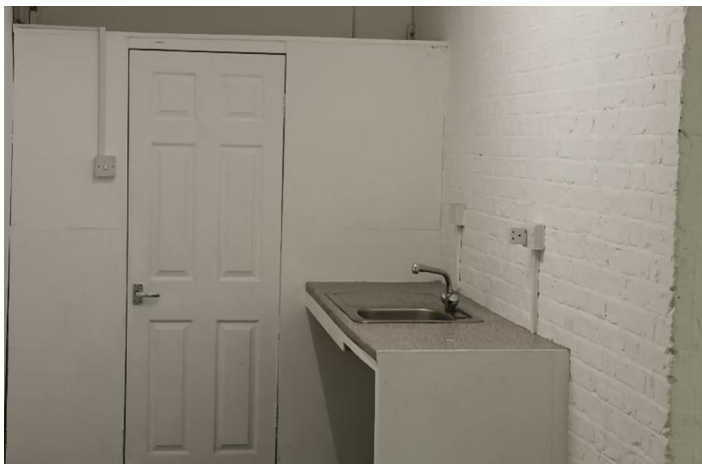
The property boasts 575 sq feet, has a large storage area complete with office, kitchen and a bathroom.

The unit is suitable for all purposes.

Please call Rolfe East on 0208 566 0288 for appointments.



Council Tax Band: Exempt





Directions

Viewings

Viewings by arrangement only. Call 020 8566 0288 to make an appointment.

EPC Rating:

Energy Efficiency Rating		
	Current	Potential
Very energy efficient - lower running costs		
(92 plus) A		
(81-91) B		
(69-80) C		
(55-68) D		
(39-54) E		
(21-38) F		
(1-20) G		
Not energy efficient - higher running costs		
England & Wales	EU Directive 2002/91/EC	