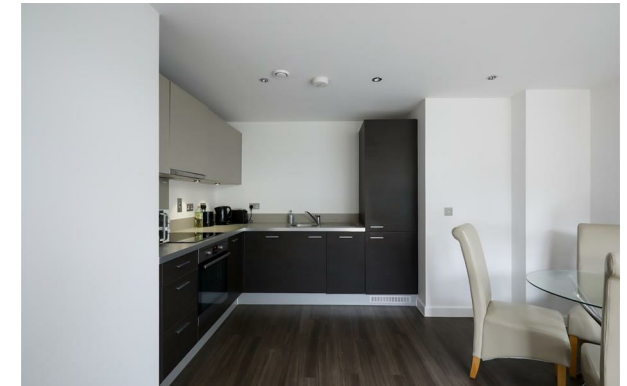


Rolfe East



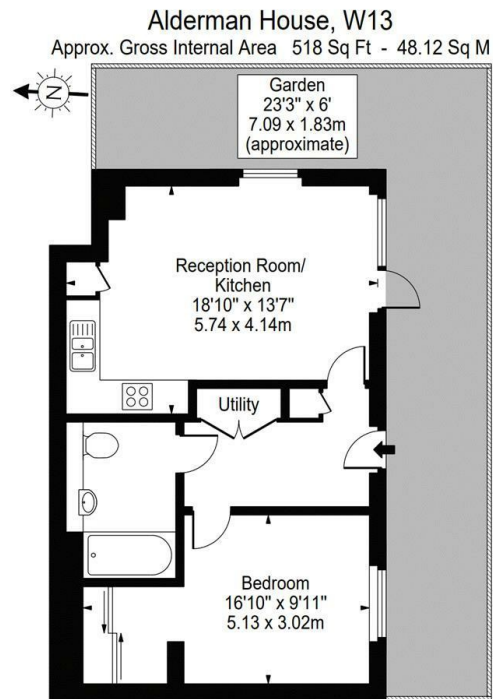
Tewkesbury Road, Ealing, W13 0BU

£355,000

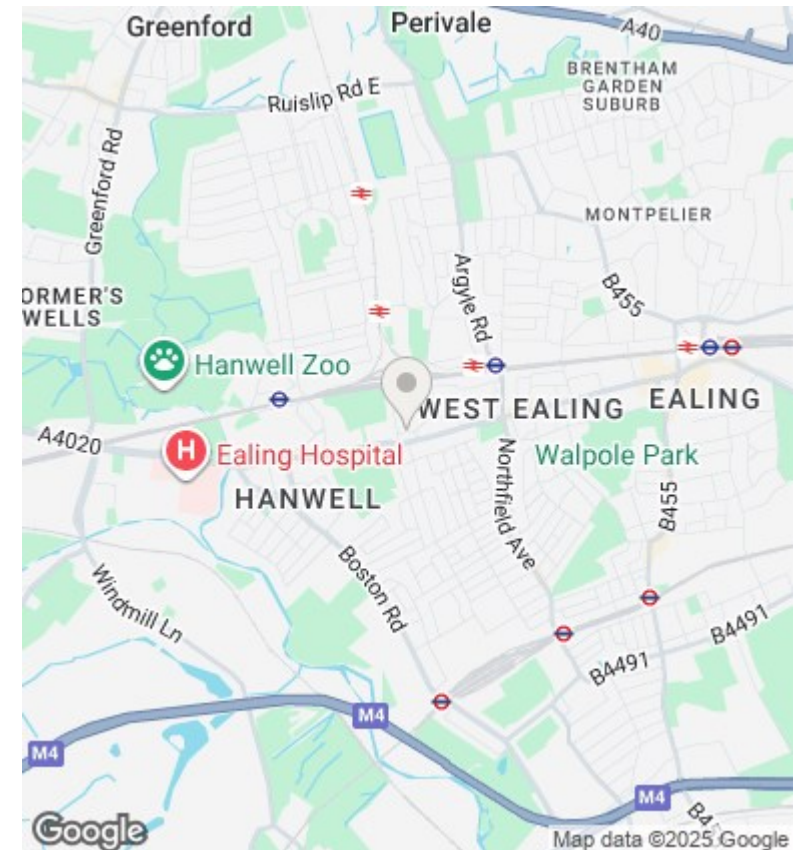
- Secure underground parking
- Chain free sale
- Beautifully Presented
- Private ground floor entrance
- Stunning one bedroom apartment
- Must be viewed
- Private courtyard garden
- Close to Elizabeth Line and Overground station

289 Northfield Avenue, Ealing, W5 4XB
020 8579 1111

northfields@rolfe-east.com
<https://www.rolfe-east.com/>



Ground Floor
 For Illustration Purposes Only - Not To Scale Floor Plan by Mira Nikolova Photography
This floor plan should be used as a general outline for guidance only and does not constitute in whole or in part an offer or contract.
 Any intending purchaser or lessee should satisfy themselves by inspection, searches, enquiries and full survey as to the correctness of each statement.
 Any areas, measurements or distances quoted are approximate and should not be used to value a property or be the basis of any sale or let.



Directions

Viewings

Viewings by arrangement only. Call 020 8579 1111 to make an appointment.

Council Tax Band

C

EPC Rating:

B

Energy Efficiency Rating		
	Current	Potential
Very energy efficient - lower running costs		
(92 plus) A		
(81-91) B	82	82
(69-80) C		
(55-68) D		
(39-54) E		
(21-38) F		
(1-20) G		
Not energy efficient - higher running costs		
England & Wales	EU Directive 2002/91/EC	