

# Rolfe East



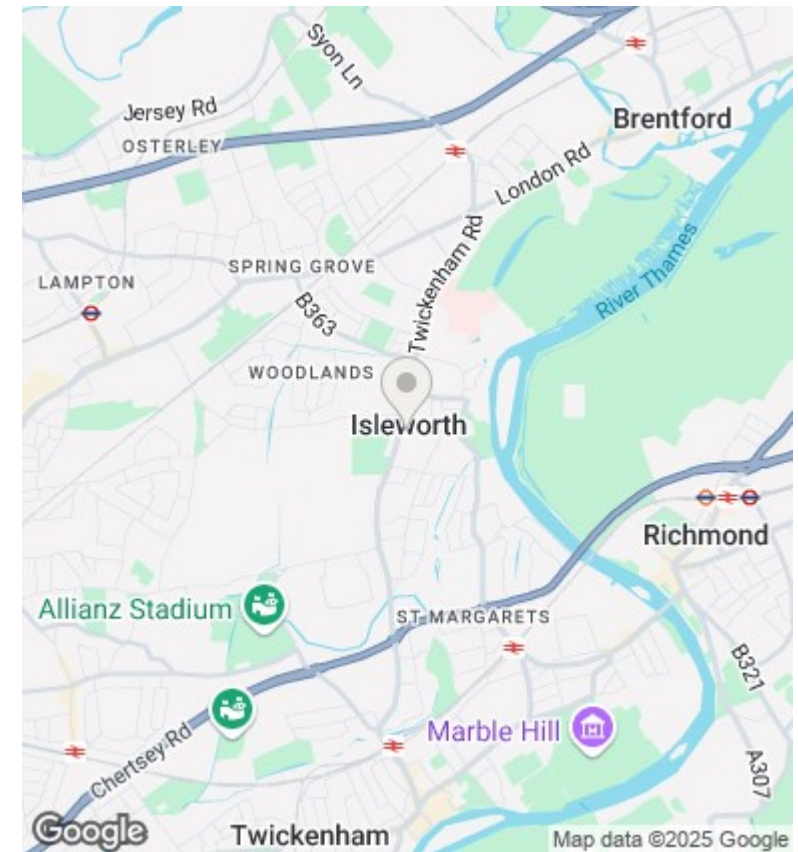
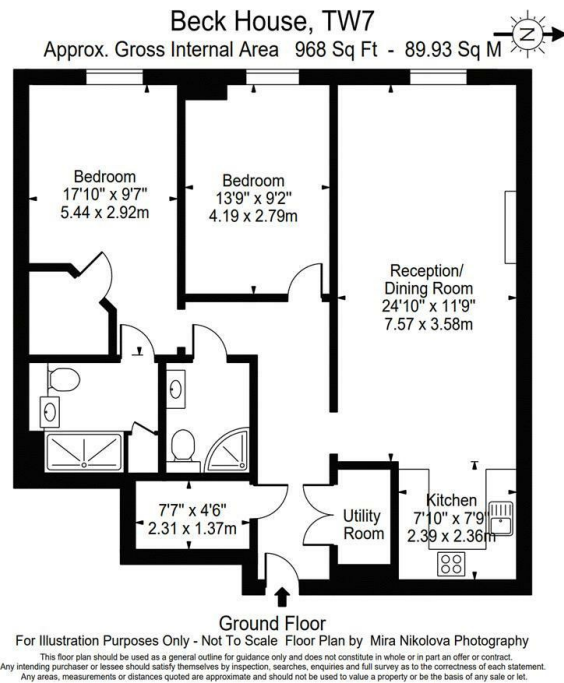
Twickenham Road, Isleworth, TW7 7DJ

£399,950

- Private gated retirement development (over 60's)
- Two double bedrooms
- Long 995 year lease
- Two Luxury bathrooms
- Almost 1000 sqft of accommodation
- Beautiful communal areas
- Attractive communal grounds
- High specification throughout

289 Northfield Avenue, Ealing, W5 4XB  
020 8579 1111

northfields@rolfe-east.com  
<https://www.rolfe-east.com/>



## Directions

## Viewings

Viewings by arrangement only. Call 020 8579 1111 to make an appointment.

## Council Tax Band

E

## EPC Rating:

B

Energy Efficiency Rating		
	Current	Potential
Very energy efficient - lower running costs		
(92 plus) <b>A</b>		
(81-91) <b>B</b>	87	87
(69-80) <b>C</b>		
(55-68) <b>D</b>		
(39-54) <b>E</b>		
(21-38) <b>F</b>		
(1-20) <b>G</b>		
Not energy efficient - higher running costs		
<b>England &amp; Wales</b>	EU Directive 2002/91/EC	