

Rolfe East



Woodlands Road, TW7

£330,000

- Ground Floor Flat
- One Double Bedroom
- Well Presented Throughout
- Private Courtyard
- Excellent Location

A bright and spacious one double bedroom flat situated in the popular Woodlands estate in Isleworth. The property offers a reception with South facing bay windows, a separate, modern kitchen, beautiful bathroom and a large double bedroom. The property also has the additional benefit of a large private courtyard, use of the communal gardens and parking for one car on a first-come basis.

Woodlands Road sits behind the large green open space of Thornbury Park and is a short walk to the wide range of amenities on both London Road and St Johns Road. Isleworth Mainline station (SWR) is close by, as are a range of bus routes providing links to Brentford, Ealing, Chiswick, Hounslow, St Margaret's, and Richmond. The Piccadilly line at Osterley station is approx. a 20 minute walk.

To arrange your appointment, please call Rolfe East on 020 8579 1111.

 1

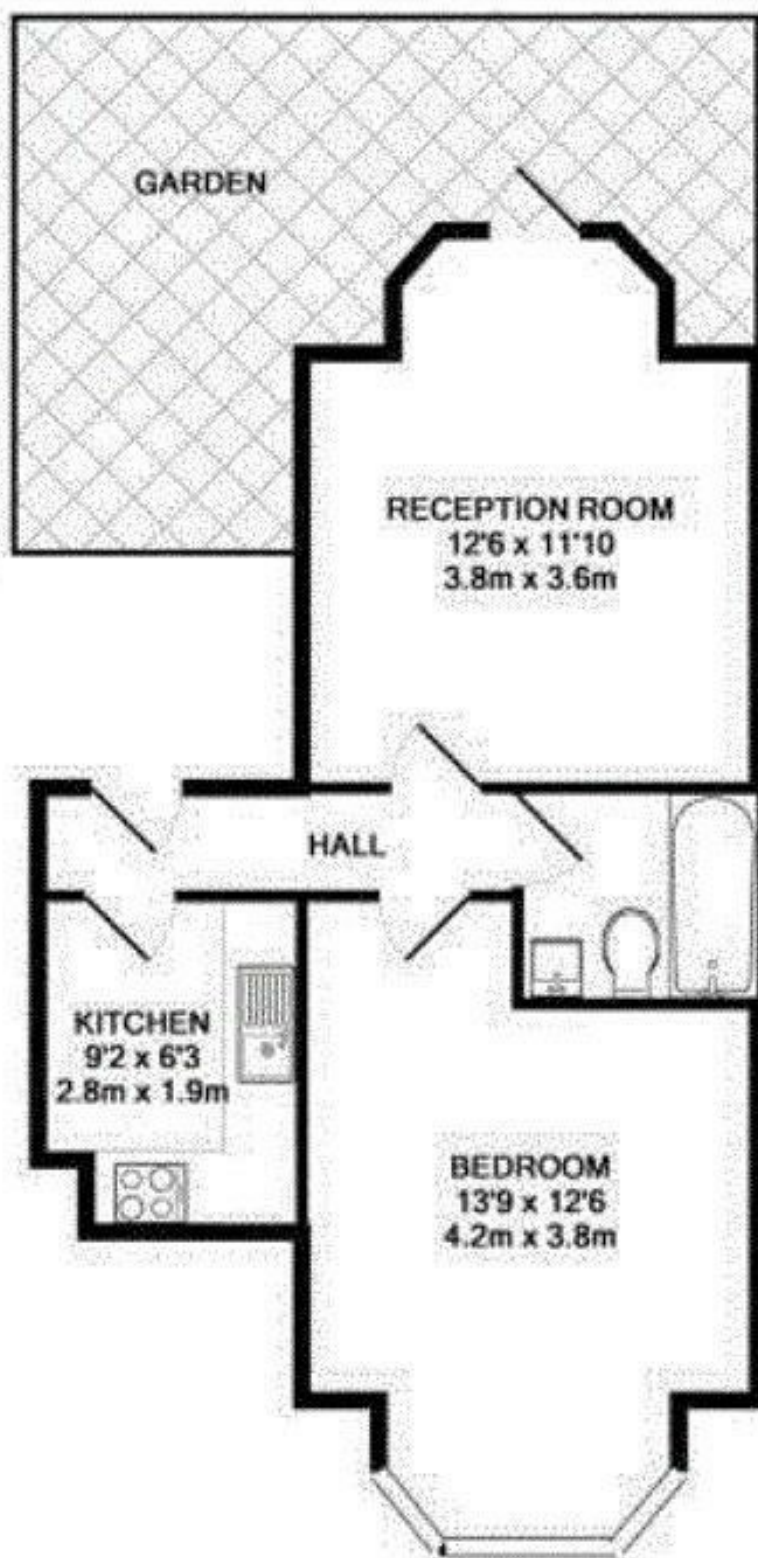
 1

 1

 C

Council Tax Band: C



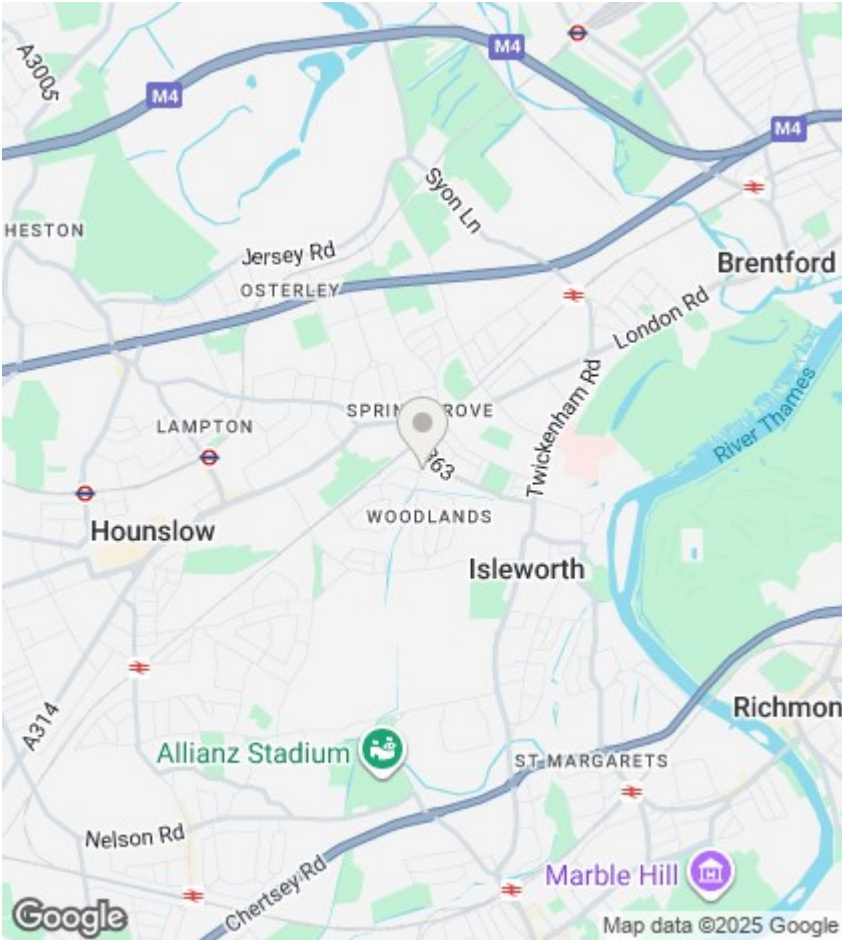


4 ASHGROVE HOUSE

TOTAL APPROX. FLOOR AREA 494 SQ. FT. (45.9 SQ. M.)

Whilst every attempt has been made to ensure the accuracy of the floor plan contained here, measurements of doors, windows, rooms and any other items are approximate and no responsibility is taken for any error, omission, or mis-statement. This plan is for illustrative purposes only and should be used as such by any prospective purchaser. The services, systems and appliances shown have not been tested and no guarantee is given for their responsibility or effectiveness other than has been stated.

Directions



Viewings

Viewings by arrangement only.
Call 020 8579 1111 to make an appointment.

EPC Rating:

C

Energy Efficiency Rating		
	Current	Potential
Very energy efficient - lower running costs		
(92 plus) A		
(81-91) B		
(69-80) C	74	78
(55-68) D		
(39-54) E		
(21-38) F		
(1-20) G		
Not energy efficient - higher running costs		
England & Wales	EU Directive 2002/91/EC 