

# Rolfe East



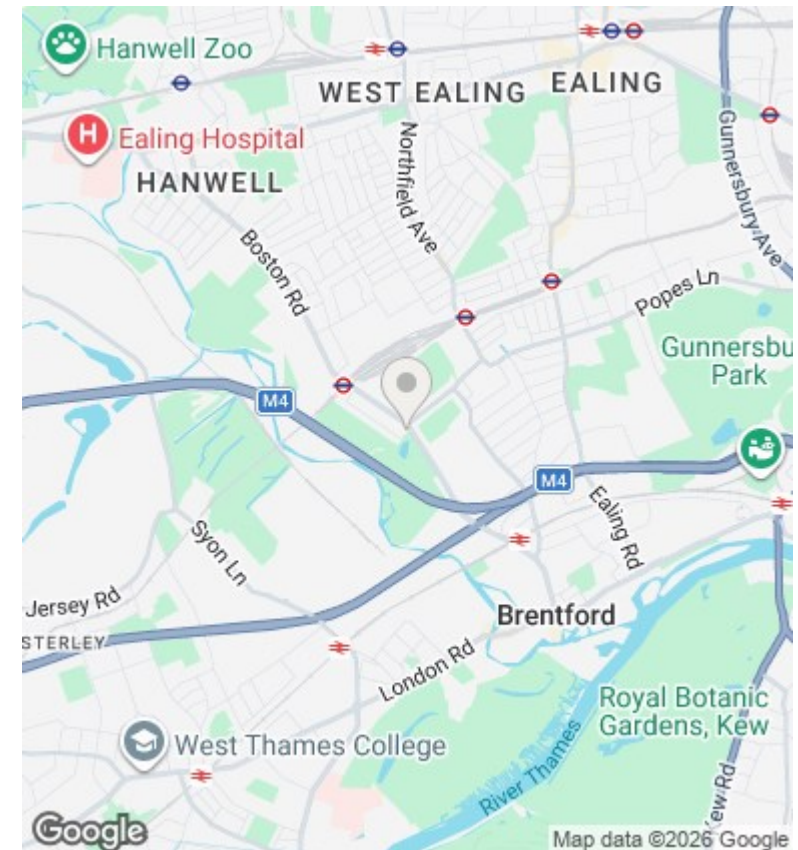
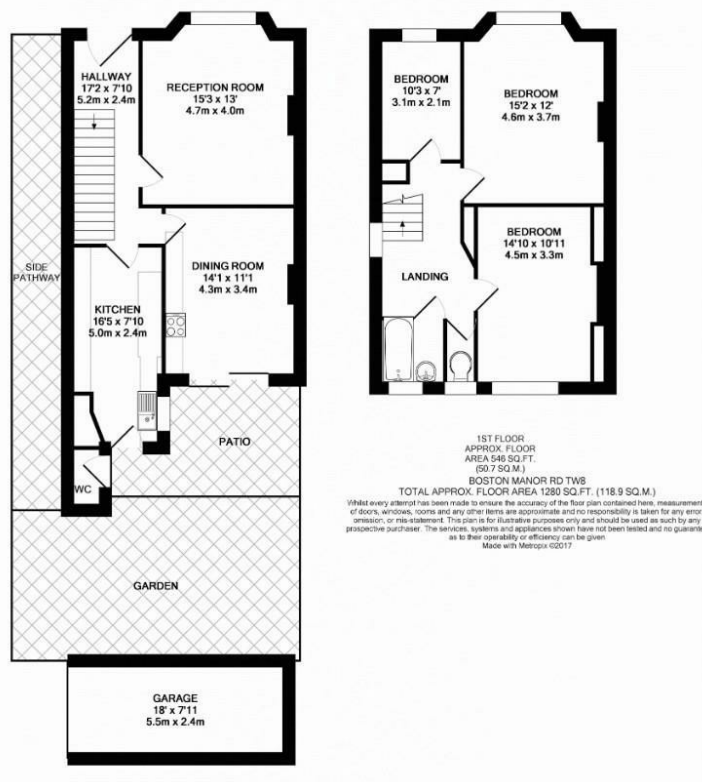
Boston Manor Road, Brentford, TW8 9LN

£749,950

- Three well proportioned bedrooms
- Potential to extend STPP
- No onward chain
- Two large reception rooms
- 0.3 of a mile from Boston Manor Station (Piccadilly Line)
- Large garage to rear
- Chain free sale
- Excellent transport links

289 Northfield Avenue, Ealing, W5 4XB  
020 8579 1111

northfields@rolfe-east.com  
<https://www.rolfe-east.com/>



## Directions

## Viewings

Viewings by arrangement only. Call 020 8579 1111 to make an appointment.

## Council Tax Band

E

## EPC Rating:

E

Energy Efficiency Rating		
	Current	Potential
Very energy efficient - lower running costs		
(92 plus) <b>A</b>		
(81-91) <b>B</b>		<b>84</b>
(69-80) <b>C</b>		
(55-68) <b>D</b>		
(39-54) <b>E</b>	<b>48</b>	
(21-38) <b>F</b>		
(1-20) <b>G</b>		
Not energy efficient - higher running costs		
<b>England &amp; Wales</b>	EU Directive 2002/91/EC	