

Rolfe East



London Road, SL5

£775,000

- Stunning Villa
- First Floor Apartment
- Communal Gardens
- Borders Sunningdale Ladies Golf Course
- Three Double Bedrooms
- 99 Year Lease

A well presented first floor apartment set within Spanish-style villa boasting character, charm and period features. The property offers a large reception room, fitted kitchen, three double bedrooms, and a modern family bathroom.

Sunning House is situated in an area with world renowned golf courses to include Wentworth, Sunningdale, Swinley Forest and The Berkshire.

 3

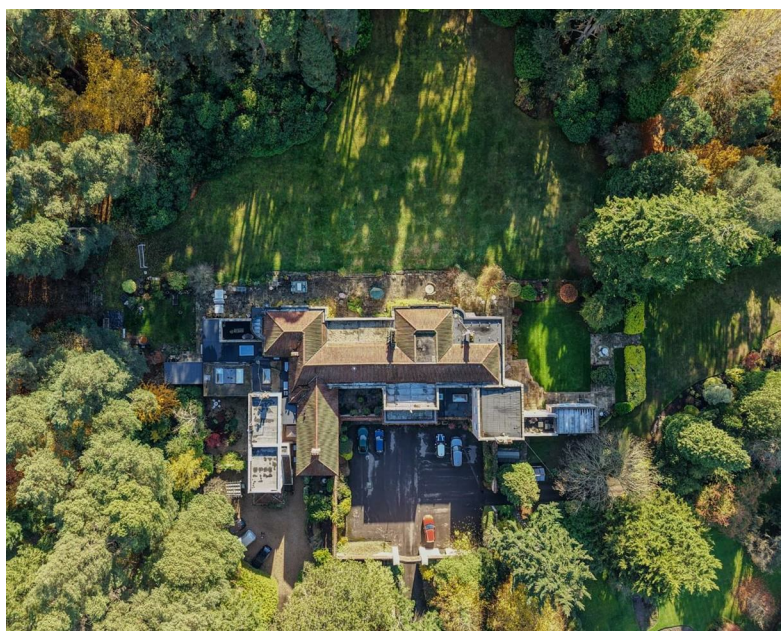
 2

 1

 C

Council Tax Band: D







London Road, Sunningdale

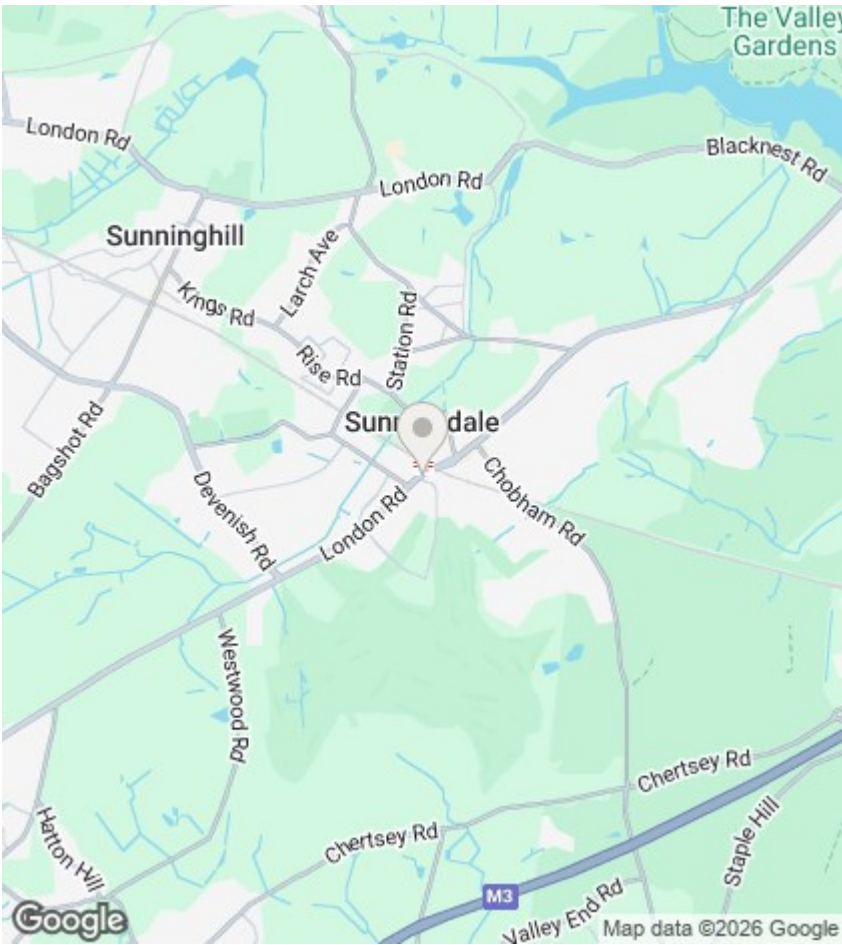
Approximate Area = 1818 sq ft / 168.8 sq m

For identification only - Not to scale



FIRST FLOOR

Directions



Viewings

Viewings by arrangement only.
Call 020 8579 1111 to make an appointment.

EPC Rating:

C

