



5 Robinson Court , YO18 8EG

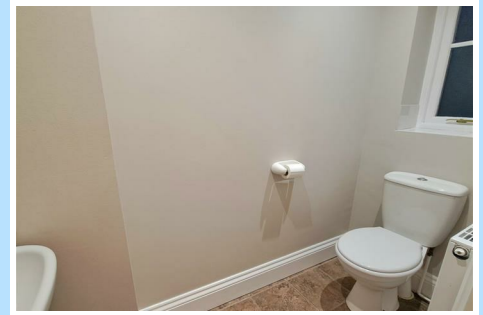
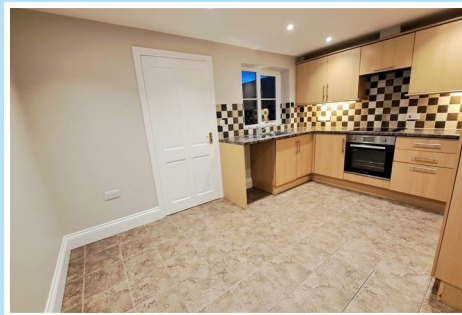
£725 Per Month



5 Robinson Court

, Pickering, YO18 8EG

£725 Per Month



This stunning two bedroom house is available to let on a long term basis and has just undergone redcoration and newly fitted carpets throughout. The property benefits from entrance hall, a good size sitting room, dining kitchen, rear lobby and guest WC to the ground floor. There are two good size bedrooms and modern bathroom with a newly fitted shower to the first floor. With an allocated parking space and enclosed lawned garden to the rear. A convenient location withing walking distance to all of Pickering's local amenities.

- Modern two bedroom house to let
- Allocated parking space
- Modern decor throughout
- Fantastic location in Pickering
- Enclosed garden
- Ground floor WC
- Available June
- Long term let preferred

Entrance Hall

Door the the front and stairs

Sitting Room

15'3 x 13'5 (4.65m x 4.09m)

Window to the front, TV and telephone point and electric fire

Dining Kitchen

13'5 x 9'7 (4.09m x 2.92m)

Fitted wall and base units, window to the rear aspect, built in fridge freezer, oven, hob and extractor hood. Radiator.

Reat entrance lobby

Cupboard housing gas boiler

Guest Cloakroom/WC

7 x 2'8 (2.13m x 0.81m)

Low level WC and wash basin. Extractor fan

First Floor Landing

Bedroom One

13'5 x 12'8 (4.09m x 3.86m)

Radiator, window to the front and overstairs cupboard

Bedroom Two

12'3 x 7'1 (3.73m x 2.16m)

Window to the rear aspect and radiator

Bathroom

6'6 x 6'1 (1.98m x 1.85m)

White suite with low level WC, pedestal hand wash basin, panel bath with electric shower over. Window to the rear aspect and radiator

Council Tax Band B

Exterior

Enclosed rear lawned garden and allocated parking space

Services

Mains gas, electric, water and drainage

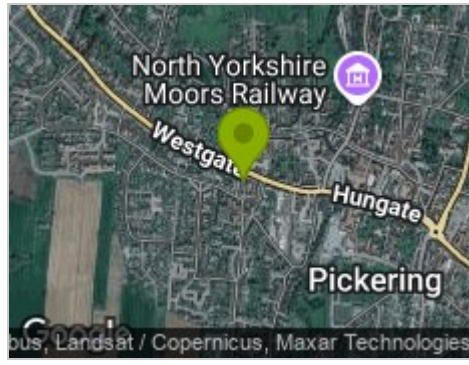
Tel: 07515763622



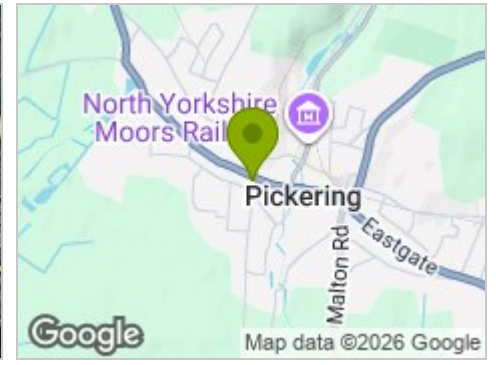
Road Map



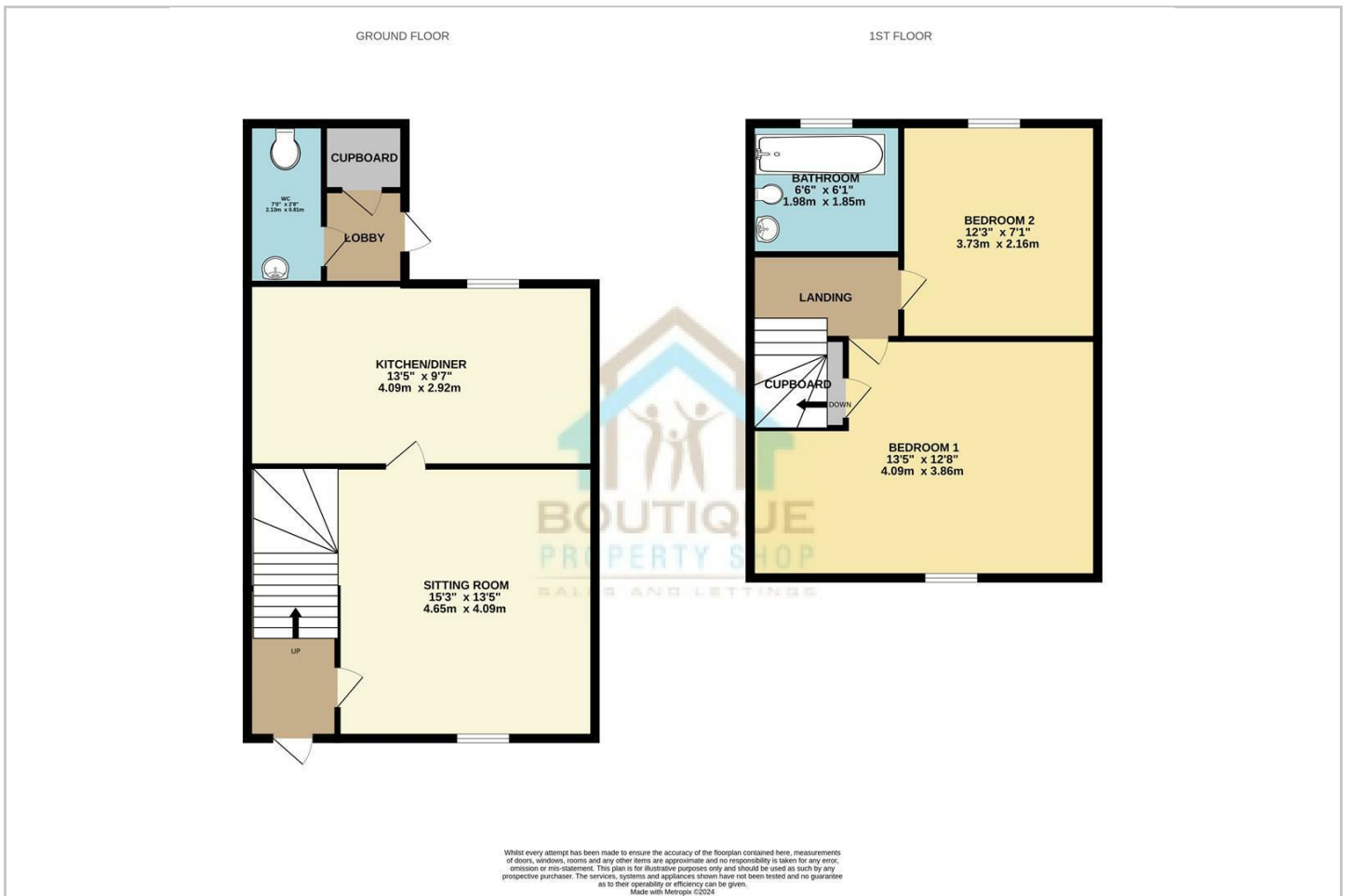
Hybrid Map



Terrain Map



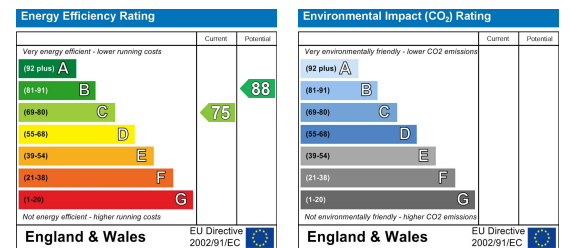
Floor Plan



Viewing

Please contact our Boutique Property Shop Office on 07515763622 / 01653 524224 if you wish to arrange a viewing appointment for this property or require further information.

Energy Efficiency Graph



These particulars, whilst believed to be accurate are set out as a general outline only for guidance and do not constitute any part of an offer or contract. Intending purchasers should not rely on them as statements of representation of fact, but must satisfy themselves by inspection or otherwise as to their accuracy. No person in this firm's employment has the authority to make or give any representation or warranty in respect of the property.