

Butler's

thoughtful estate agency

Chertsey Drive
Sutton, SM3 9UG

Offers in the region of £625,000



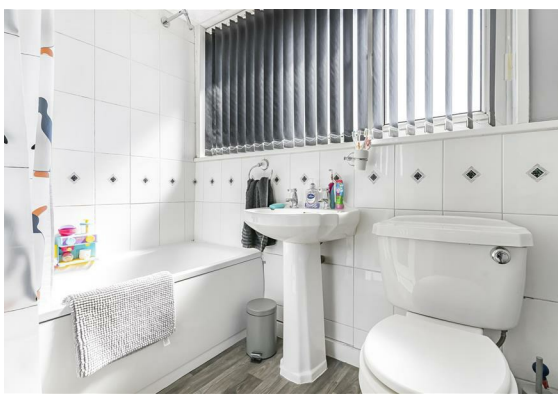
Chertsey Drive

Cheam, Sutton, SM3 9UG

Nestled in Park Farm, one of Cheam's most well regarded, family orientated locations, this lovely, extended, family home has so much to offer, both inside and out. It's also situated in a quiet road that's on the doorstep of fabulous amenities, open spaces and outstanding schools - with great transport links such as buses and West Sutton & Common stations providing quick links into the City - you'll be from sofa to London in under an hour.

Sitting in your gorgeous living room overlooking your front driveway, you will appreciate that this a fabulous place for you to enjoy a good book or have the family congregate in. Inside the remainder of your home, you'll appreciate the large amount of work the property has had over the current sellers' ownership, meaning you can just pack your bags and move straight in. The ground floor is a flowing, semi-open plan layout to the rear, offering a huge amount of versatility, so you can adapt the space to your own personal preference for relaxing, get-togethers, dining and even for when you work from home. If you like to entertain, the family room is perfect, with the adjacent kitchen/diner allowing you to cook up a storm in what is a truly well thought out and designed place for you to enhance your culinary skills.

Upstairs, this house certainly doesn't let you down; with 4 well-proportioned bedrooms and 2 bathrooms (one en-suite with independent access), there will be a tough choice about which one to make the kids rooms. You on the other hand won't have that issue, as the fabulous master encompasses all of the second floor and has a more secluded feel, with elevated views to the rear, also boasting integrated wardrobes. On the outside, to the rear, there is the bonus of a double garage (accessed via a rear service road) leading on from the mature, generous garden that is perfect for a summer barbecue and the kid's to play in, with a driveway to the front proving further off-street parking.





GROUND FLOOR

Hallway

Living Room

13' x 11'1 (3.96m x 3.38m)

Kitchen/Dining Room

14' x 13' maximum (4.27m x 3.96m maximum)

Family Room

14' x 9'5 (4.27m x 2.87m)



FIRST FLOOR

Landing

Bedroom

12'9 x 11'7 maximum (3.89m x 3.53m maximum)

Bedroom

13'2 x 8'5 (4.01m x 2.57m)

Bedroom

8'5 x 5'7 (2.57m x 1.70m)

Bathroom

6'11 x 5'7 (2.11m x 1.70m)



SECOND FLOOR

Landing

Bedroom

19'8 x 16'10 maximum (5.99m x 5.13m maximum)

En-Suite (with independent access)

5'5 x 4'11 (1.65m x 1.50m)



OUTSIDE

Rear Garden

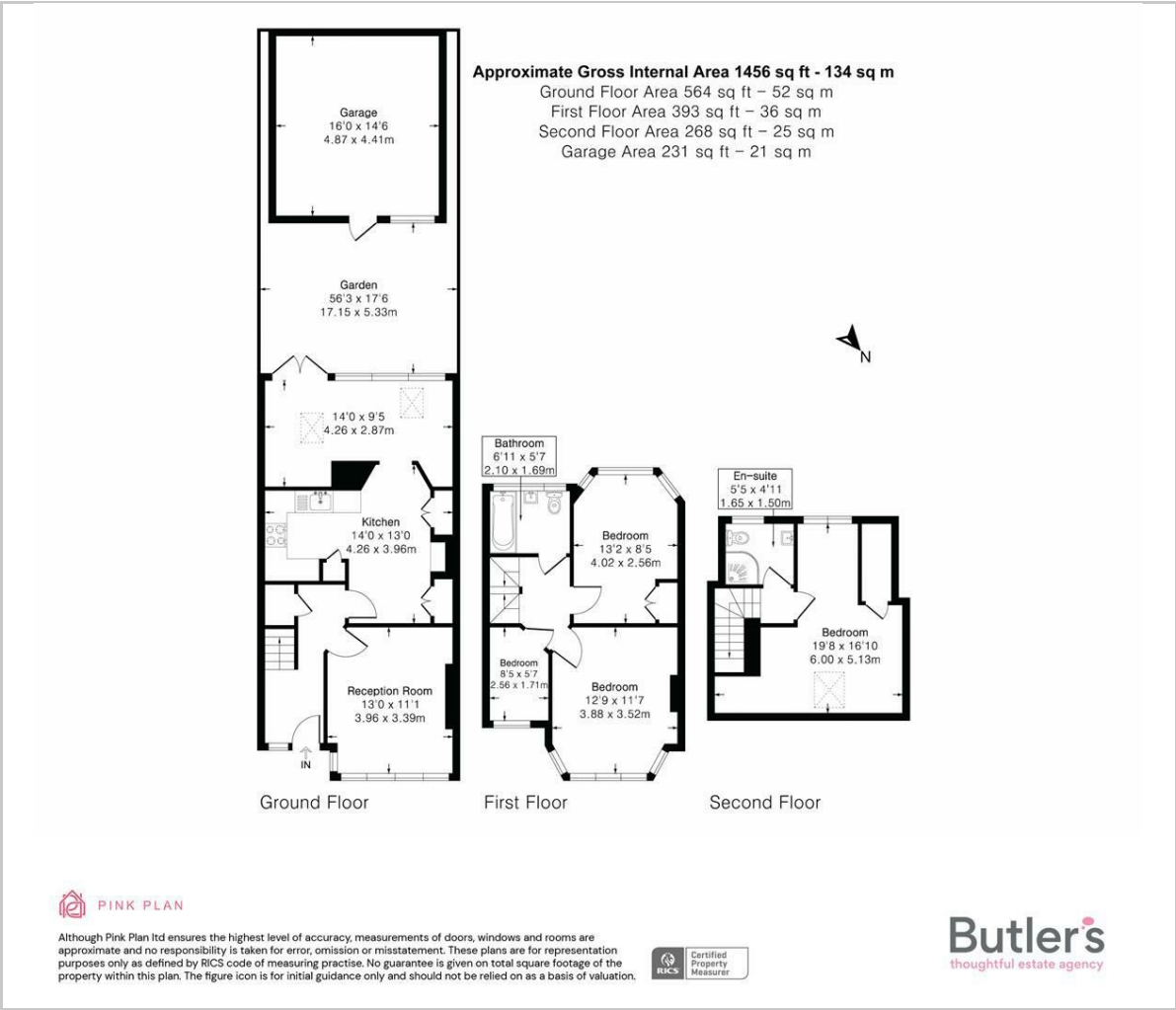
Double Garage

16' x 14.5' approximately (4.88m x 4.27m.1.52m approximately)

Front Driveway



Floor Plan



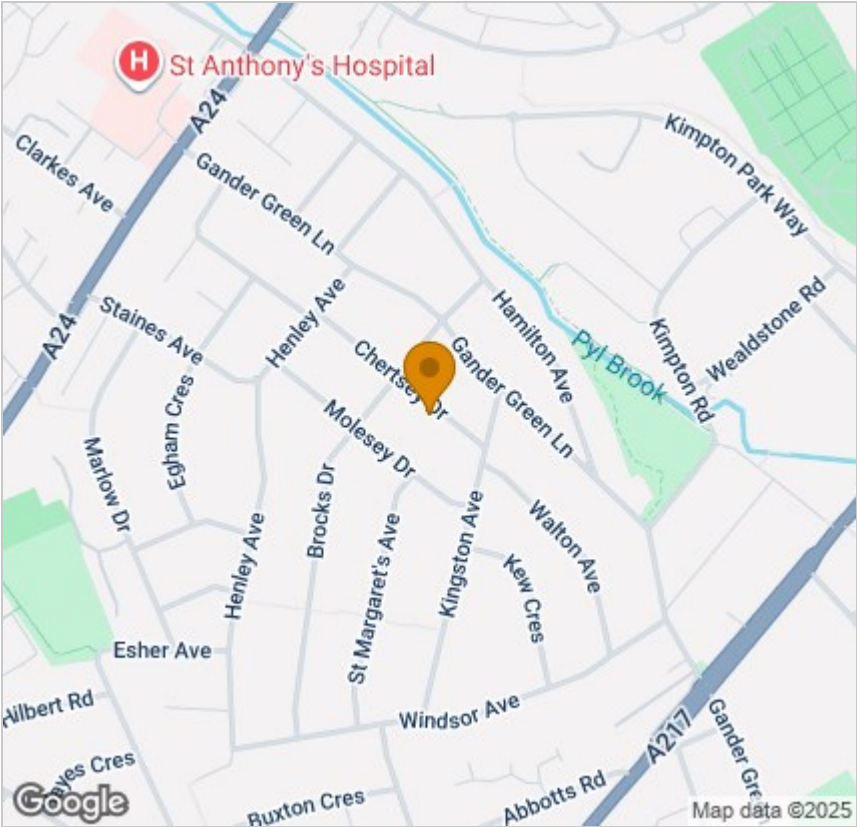
Viewing

Please contact our Butler's Sales Office on 020 39 170 160 if you wish to arrange a viewing appointment for this property or require further information.

These particulars, whilst believed to be accurate are set out as a general outline only for guidance and do not constitute any part of an offer or contract. Intending purchasers should not rely on them as statements of representation of fact, but must satisfy themselves by inspection or otherwise as to their accuracy. No person in this firms employment has the authority to make or give any representation or warranty in respect of the property.

18 Sutton Plaza, Sutton, Surrey, SM1 4FS
Tel: 020 39 170 160 Email: hello@butlershomes.co.uk butlershomes.co.uk

Area Map



Energy Efficiency Graph

