


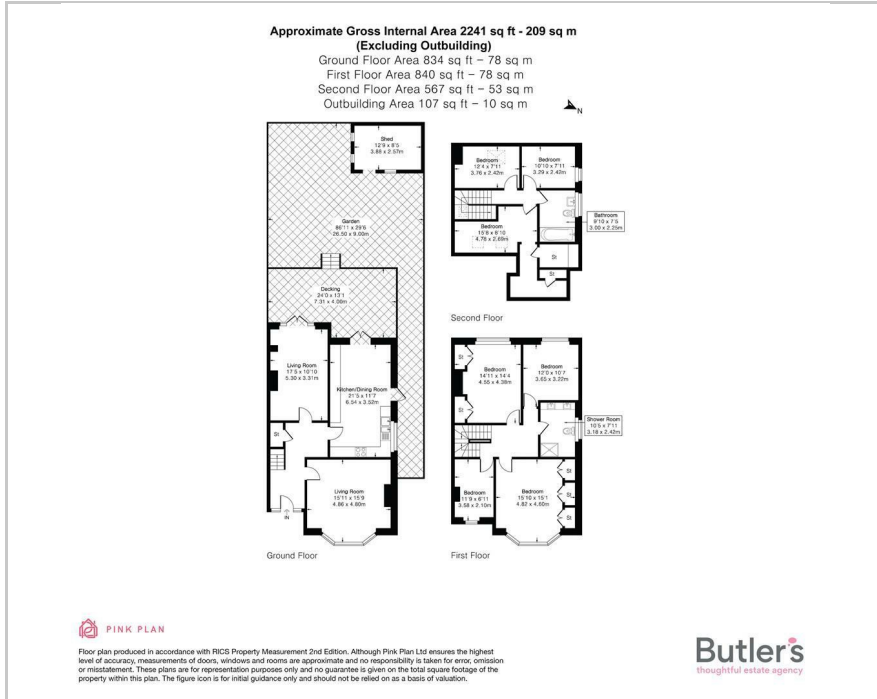


Butler's
thoughtful estate agency

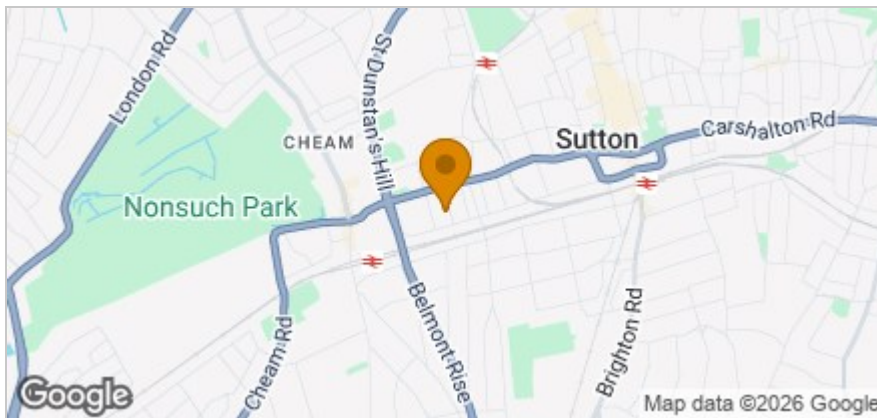
Rosebery Road, Sutton, SM1 2BW
Guide price £1,000,000

 7  2  2  D

Floor Plan



Area Map



Accommodation

- Substantial 7 bedroom semi-detached house
- Prestigious & desirable tree lined road in Cheam
- 2 Reception rooms and large kitchen/breakfast room
- In need of some cosmetic improvement
- Mature rear garden with outbuilding
- Private driveway to front
- Future potential to extend to the rear - subject to the relevant permissions
- Set within the Landseer Conservation area
- Close to outstanding schooling, transport links & amenities
- Internal accommodation excess of 2200 sq ft

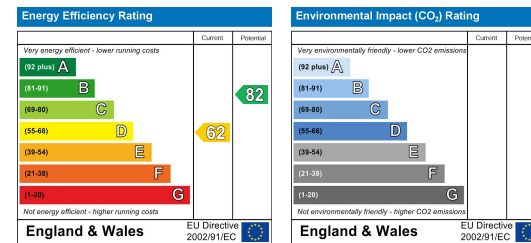


Viewing

Please contact our Butler's Sutton Office on 020 39 170 160 if you wish to arrange a viewing appointment for this property or require further information.



Energy Efficiency Graph



These particulars, whilst believed to be accurate are set out as a general outline only for guidance and do not constitute any part of an offer or contract. Intending purchasers should not rely on them as statements of representation of fact, but must satisfy themselves by inspection or otherwise as to their accuracy. No person in this firm's employment has the authority to make or give any representation or warranty in respect of the property.

18 Sutton Plaza, Sutton, Surrey, SM1 4FS

Tel: 020 39 170 160 Email: sutton@butlershomes.co.uk butlershomes.co.uk