

Butler's

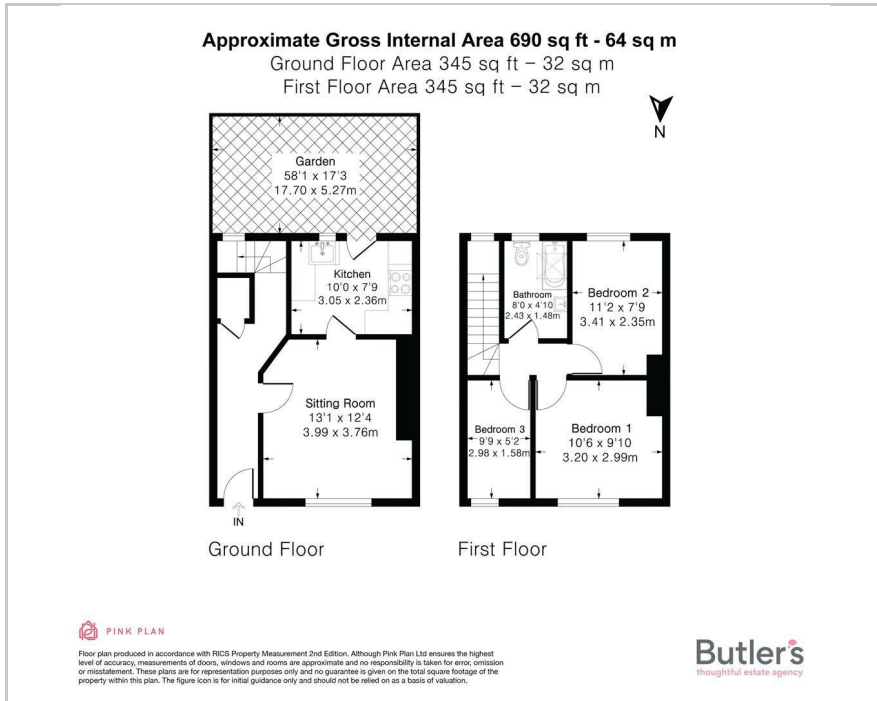
thoughtful estate agency



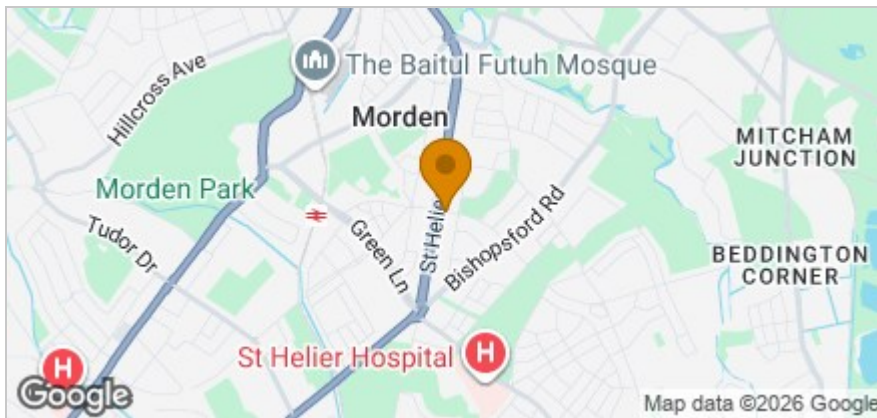
Middleton Road, Morden, SM4 6RR
Guide price £475,000



Floor Plan



Area Map



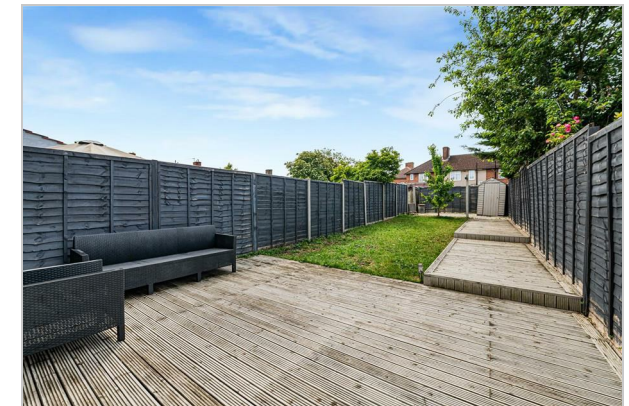
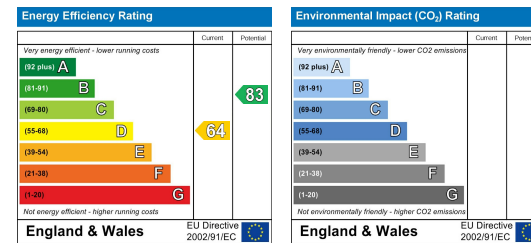
Accommodation

- Beautifully presented 3 bedroom home
- Seller suited - quick move possible
- Fantastic proportions throughout
- Spacious living/dining room
- Modern kitchen & bathroom
- Private driveway to front
- Level rear garden to rear
- Fabulous location close to excellent schooling & amenities
- Quick links to London via Morden tube or St Helier
- Scope to extend - subject to the relevant permissions

Viewing

Please contact our Butler's Worcester Park Office on 020 39 069 169 if you wish to arrange a viewing appointment for this property or require further information.

Energy Efficiency Graph



These particulars, whilst believed to be accurate are set out as a general outline only for guidance and do not constitute any part of an offer or contract. Intending purchasers should not rely on them as statements of representation of fact, but must satisfy themselves by inspection or otherwise as to their accuracy. No person in this firm's employment has the authority to make or give any representation or warranty in respect of the property.