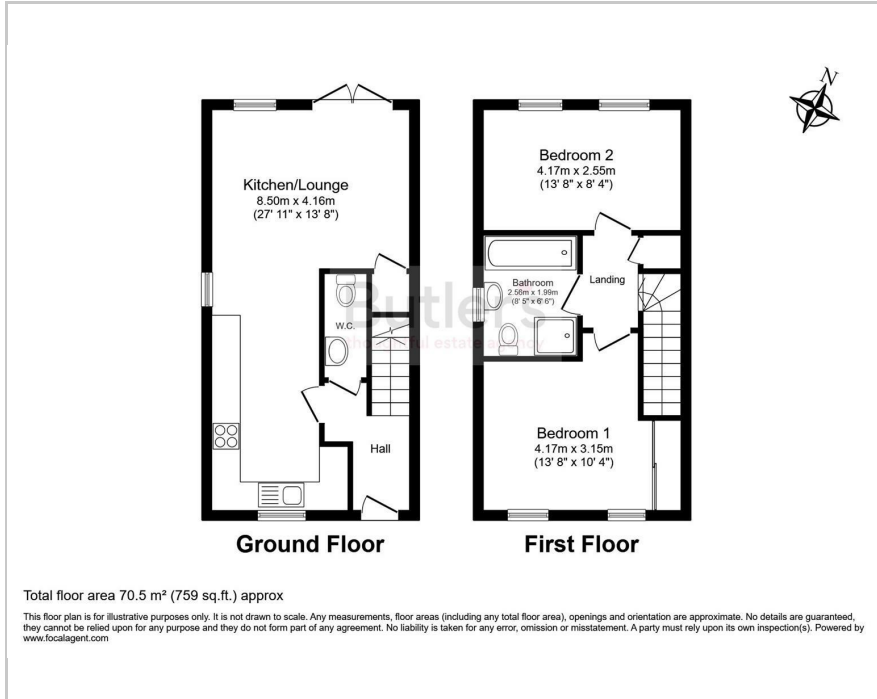




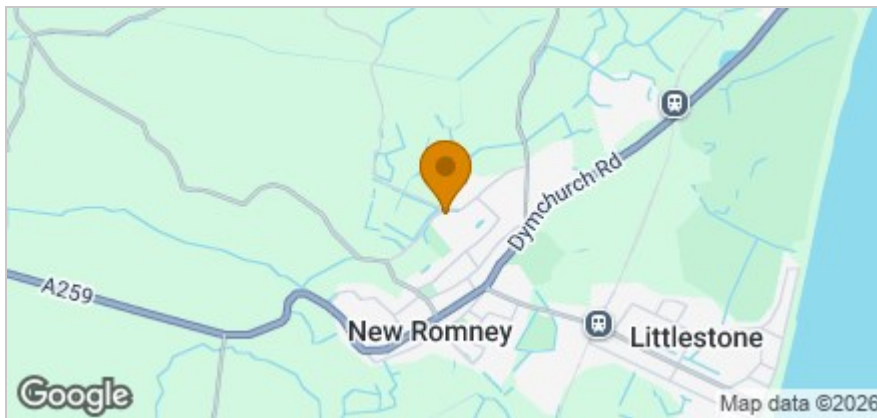
Shakespeare Crescent, New Romney, TN28 8QF  
Guide price £290,000



## Floor Plan



## Area Map



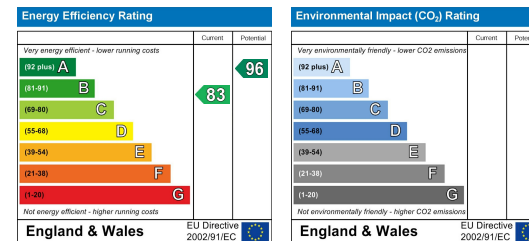
## Accommodation

- Beautiful RECENTLY BUILT home
- 2 Double bedroom SEMI-DETACHED house
- Recently landscaped rear garden
- Remainder of 10 Year insurance backed warranty
- 2 Allocated parking spaces
- Fitted luxury wardrobes in each bedroom
- Stunning kitchen and bathrooms
- Well located for fantastic schools, amenities & transport links
- Quiet, centrally located crescent location
- Cloakroom serving the ground floor

## Viewing

Please contact our Butler's Worcester Park Office on 020 39 069 169 if you wish to arrange a viewing appointment for this property or require further information.

## Energy Efficiency Graph



These particulars, whilst believed to be accurate are set out as a general outline only for guidance and do not constitute any part of an offer or contract. Intending purchasers should not rely on them as statements of representation of fact, but must satisfy themselves by inspection or otherwise as to their accuracy. No person in this firm's employment has the authority to make or give any representation or warranty in respect of the property.