

# Butler's

thoughtful estate agency

High Street, Sutton, SM1 1NY  
£2,375 Per month

3 1 1 D



# PROPERTY SUMMARY

Nestled in the heart of Sutton on the bustling High Street, this nearly new first-floor flat offers a perfect blend of modern living and convenience. With three well-proportioned bedrooms, this property is ideal for families or professionals seeking a comfortable and stylish home.

The open-plan reception room creates a welcoming atmosphere, perfect for entertaining guests or enjoying quiet evenings in. The layout maximises space and light, making the flat feel airy and inviting. The contemporary kitchen is designed for practicality, allowing for easy meal preparation and socialising.

One of the standout features of this property is its prime location. Just a short stroll from the local station, commuting to London or other nearby areas is a breeze. Additionally, residents will find themselves surrounded by a variety of shops, restaurants, and amenities, ensuring that everything you need is right on your doorstep.

This flat presents an excellent opportunity for those looking to enjoy the vibrant lifestyle that Sutton has to offer, all while residing in a modern and comfortable home. Don't miss the chance to make this delightful property your own.





LOCAL AUTHORITY  
Sutton

DEPOSIT REQUIRED  
£2,365

PROPERTY AVAILABLE DATE  
17th April 2026

COUNCIL TAX BAND  
D

VIEWINGS  
By prior appointment only

Energy Efficiency Rating		Current	Potential
Very energy efficient - lower running costs			
(92 plus) A			
(81-91) B			
(69-80) C			
(55-68) D		68	68
(39-54) E			
(21-38) F			
(1-20) G			
Not energy efficient - higher running costs			
England & Wales		EU Directive 2002/91/EC	

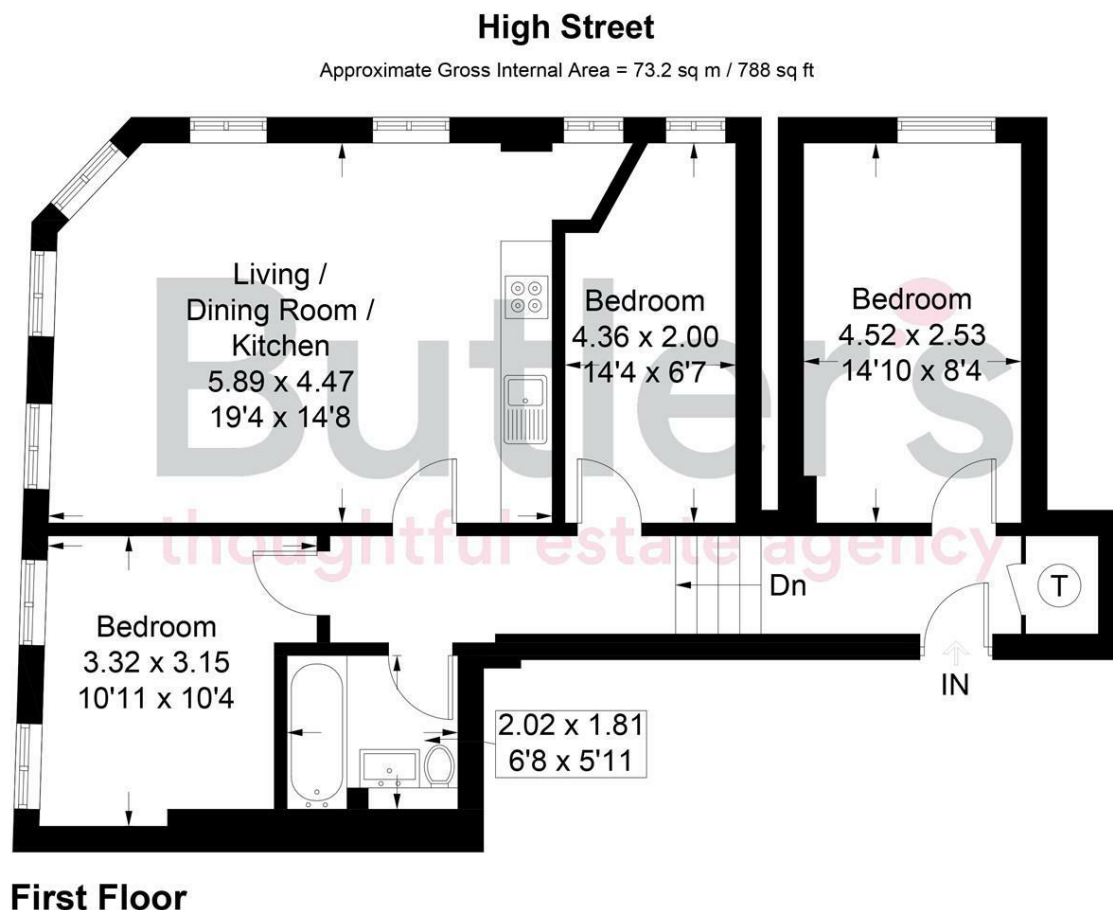


Illustration for identification purposes only, measurements are approximate, not to scale. Fourlabs.co © (ID1291767)

Agents Note: Whilst every care has been taken to prepare these particulars, they are for guidance purposes only. All measurements are approximate and are for general guidance purposes only and whilst every care has been taken to ensure their accuracy, they should not be relied upon and potential buyers/tenants are advised to recheck the measurements

**Butler's**  
thoughtful estate agency

OFFICE ADDRESS  
18 Sutton Plaza  
Sutton  
Surrey  
SM1 4FS

OFFICE DETAILS  
020 39 170 160  
lettings@butlershomes.co.uk  
butlershomes.co.uk