

# Butler's

thoughtful estate agency



Galsworthy Road, Kingston Upon Thames,  
£1,600 Per month



# PROPERTY SUMMARY

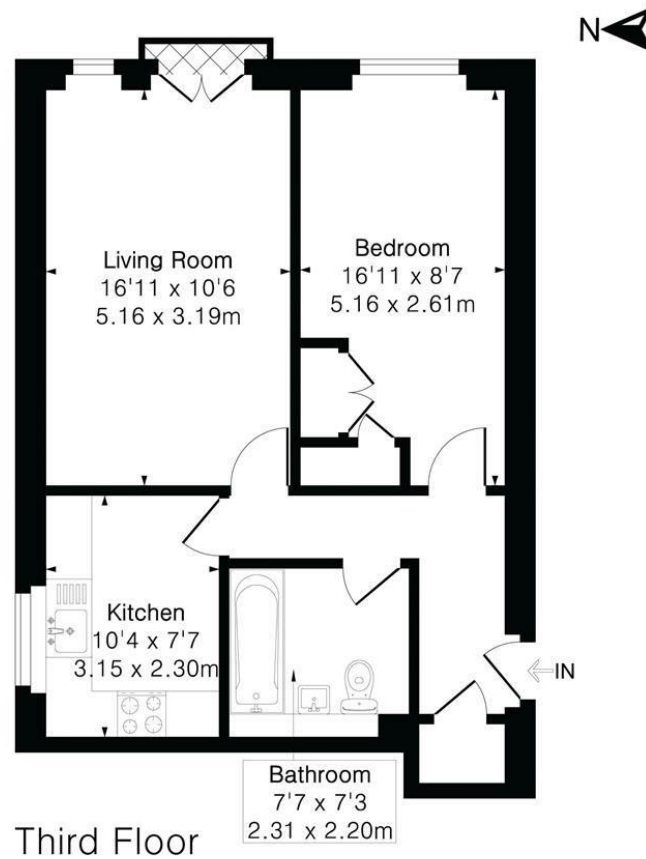
A well-presented one-bedroom apartment on Galsworthy Road, offering 527 sq ft of bright and comfortable living space. The property features a spacious reception room, newly fitted kitchen, double bedroom with built-in wardrobes, and a modern bathroom. Off-street parking is included.

Ideally located for Kingston Hospital and within easy reach of Kingston town centre, this home provides excellent access to transport links, shops, and local amenities. Perfect for professionals or anyone seeking a convenient and well-maintained property in a popular area.





Approximate Gross Internal Area 553 sq ft - 51 sq m



LOCAL AUTHORITY  
Kingston

DEPOSIT REQUIRED  
£1,846

PROPERTY AVAILABLE DATE  
31st May 2026

COUNCIL TAX BAND  
C

VIEWINGS  
By prior appointment only

Energy Efficiency Rating		
	Current	Potential
Very energy efficient - lower running costs		
(92 plus) A		
(81-91) B		
(69-80) C	75	
(55-68) D		
(39-54) E		
(21-38) F		
(1-20) G		
Not energy efficient - higher running costs		
England & Wales	EU Directive 2002/91/EC	

Agents Note: Whilst every care has been taken to prepare these particulars, they are for guidance purposes only. All measurements are approximate and are for general guidance purposes only and whilst every care has been taken to ensure their accuracy, they should not be relied upon and potential buyers/tenants are advised to recheck the measurements



Floor plan produced in accordance with RICS Property Measurement 2nd Edition. Although Pink Plan Ltd ensures the highest level of accuracy, measurements of doors, windows and rooms are approximate and no responsibility is taken for error, omission or misstatement. These plans are for representation purposes only and no guarantee is given on the total square footage of the property within this plan. The figure icon is for initial guidance only and should not be relied on as a basis of valuation.

**Butler's**  
thoughtful estate agency

OFFICE ADDRESS  
18 Sutton Plaza  
Sutton  
Surrey  
SM1 4FS

**Butler's**  
thoughtful estate agency

OFFICE DETAILS  
020 39 170 160  
lettings@butlershomes.co.uk  
butlershomes.co.uk