

clever



31 Lorrimore Avenue

Stoke, Plymouth, PL2 1HZ

£190,000



Nestled in the popular area of Stoke, this charming Victorian house on Lorrimore Avenue offers a delightful blend of character and modern living. Built in 1895, the property spans an impressive 1,012 square feet, providing ample space for comfortable living.

Upon entering, you are greeted by two spacious reception rooms, perfect for entertaining guests or enjoying quiet evenings at home. The layout is both practical and inviting, allowing for a seamless flow between the living areas. The house features two well-proportioned bedrooms, ensuring a restful retreat for all occupants.

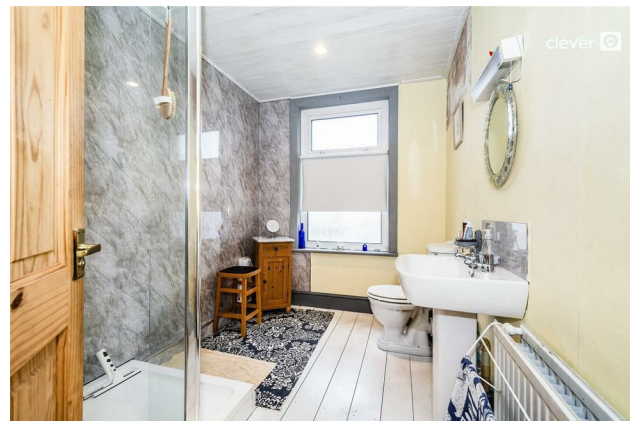
The bathroom is conveniently located upstairs, and the property is presented in good condition, making it an ideal choice for those looking to move in with minimal fuss. Additionally, the loft room offers extra versatility, whether you envision it as a home office, playroom, or additional storage space.

The location is a significant highlight, with Stoke being a sought-after area known for its community spirit and accessibility to local amenities. Residents can enjoy nearby parks, shops, and schools, making it a perfect

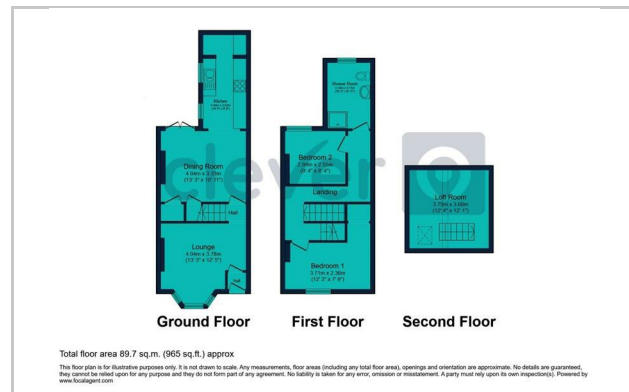




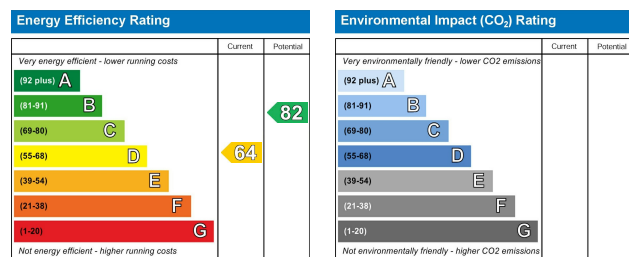
Area Map



Floor Plans



Energy Efficiency Graph



These particulars, whilst believed to be accurate are set out as a general outline only for guidance and do not constitute any part of an offer or contract. Intending purchasers should not rely on them as statements of representation of fact, but must satisfy themselves by inspection or otherwise as to their accuracy. No person in this firm's employment has the authority to make or give any representation or warranty in respect of the property.

2 Old Town Street, Plymouth, PL1 1DP
 Tel: 01752421911 Email: sales@stayclever.co.uk <https://www.stayclever.co.uk>