

# clever



## 94 Cliffaford Road

Southway, Plymouth, PL6 6DR

**Offers over £180,000**

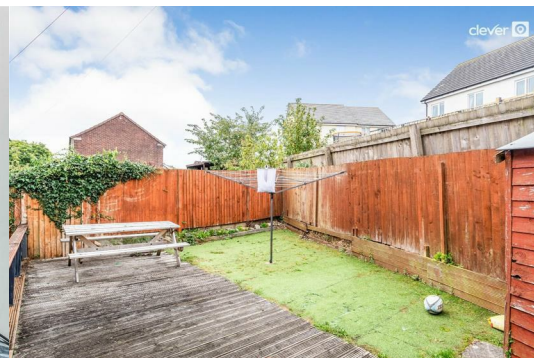


Nestled on Cliffaford Road in the vibrant city of Plymouth, this charming end-terrace house offers a delightful blend of comfort and style. Built in 1955, the property has been well-maintained and is presented in lovely condition, making it an ideal choice for families or first-time buyers.

Spanning an impressive 969 square feet, the house features three spacious bedrooms, providing ample space for relaxation and rest. The well-appointed reception room serves as a welcoming area for entertaining guests or enjoying quiet evenings at home. Additionally, the property boasts a convenient utility room, perfect for managing household chores with ease.

One of the standout features of this home is the lovely views from the front, allowing you to enjoy the picturesque surroundings. The popular location further enhances the appeal, with local amenities, schools, and parks just a stone's throw away, ensuring that everything you need is within easy reach.

This three-bedroom house on Cliffaford Road is not just a property; it is a place where memories can be made. With its charming features and prime location, it presents a wonderful opportunity for those looking to settle in a welcoming community. Don't miss the chance to make this delightful house your new home.

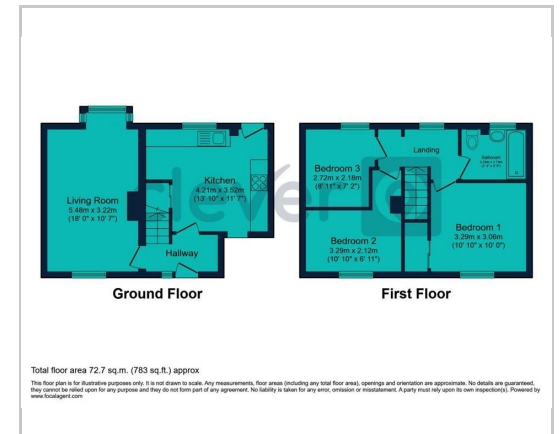




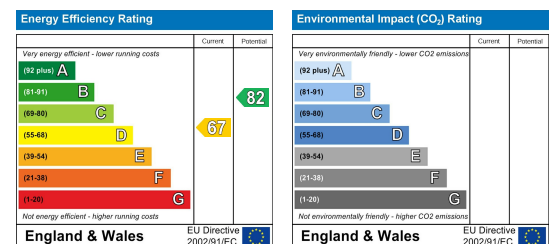
## Area Map



## Floor Plans



## Energy Efficiency Graph



These particulars, whilst believed to be accurate are set out as a general outline only for guidance and do not constitute any part of an offer or contract. Intending purchasers should not rely on them as statements of representation of fact, but must satisfy themselves by inspection or otherwise as to their accuracy. No person in this firm's employment has the authority to make or give any representation or warranty in respect of the property.

2 Old Town Street, Plymouth, PL1 1DP

Tel: 01752421911 Email: sales@stayclever.co.uk <https://www.stayclever.co.uk>