

# clever



## Flat 4, 8 Bedford Terrace

, Plymouth, PL4 8EY

**Guide price £210,000**



**GUIDE PRICE** - £210,000 - £215,000 - This splendid two-bedroom apartment with Sea Views offers a unique blend of historical elegance and modern comfort the property boasts magnificent sea views that can be enjoyed from the comfort of your own balcony, making it an ideal retreat for those who appreciate coastal living.

The apartment features a well-appointed reception room, perfect for entertaining guests or simply relaxing while taking in the stunning vistas. Both bedrooms are generously sized, providing ample space for rest and relaxation. The bathroom is thoughtfully designed, ensuring convenience and comfort for all residents.

Built in 1800, this property retains a sense of character and charm, while being maintained in excellent condition, ready for you to move in without delay. One of the standout features of this apartment is the private parking, accommodating up to two vehicles, a rare find in such a desirable location.

Whether you are looking for a permanent residence or a holiday retreat, this two-bedroom flat on Bedford Terrace is a remarkable opportunity not to be missed. With its breathtaking views, convenient amenities, and historical significance, it truly represents the best of Plymouth living.





Lounge Dining Room 22'7" x 12'7" (6.89m x 3.86m)

Kitchen 11'1" x 7'8" (3.40m x 2.35m)

Bedroom 11'5" x 9'4" (3.50m x 2.85m)

Private Parking  
x2 Spaces

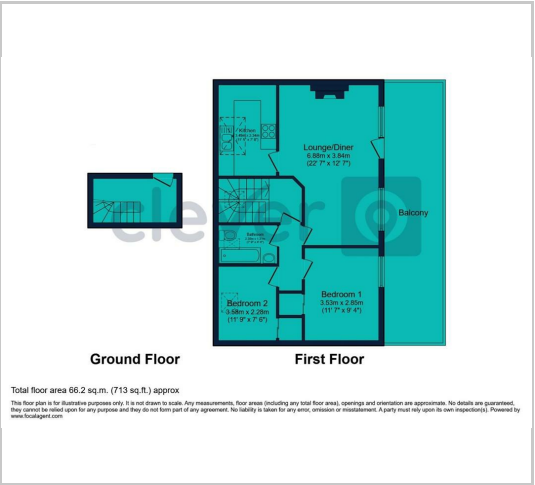
Bathroom

Balcony

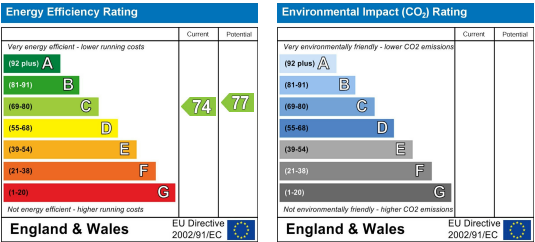
Area Map



Floor Plans



Energy Efficiency Graph



These particulars, whilst believed to be accurate are set out as a general outline only for guidance and do not constitute any part of an offer or contract. Intending purchasers should not rely on them as statements of representation of fact, but must satisfy themselves by inspection or otherwise as to their accuracy. No person in this firms employment has the authority to make or give any representation or warranty in respect of the property.

2 Old Town Street, Plymouth, PL1 1DP  
Tel: 01752421911 Email: [sales@stayclever.co.uk](mailto:sales@stayclever.co.uk) <https://www.stayclever.co.uk>