

clever



Flat 3, 8 Rochester Road

Mutley, Plymouth, PL4 6HU

Offers over £110,000



Nestled on Rochester Road in the vibrant city of Plymouth, this charming one-bedroom apartment offers a unique opportunity for those seeking a blend of comfort and convenience. Spanning an efficient 280 square feet, the property is designed for flexible living, making it ideal for young professionals, couples, or anyone looking to enjoy a low-maintenance lifestyle.

One of the standout features of this apartment is its delightful roof terrace, providing a perfect spot to unwind and soak up the sun or entertain guests while enjoying views of the surrounding area. The superb location ensures that you are just a short stroll away from the bustling city centre, where you can explore a variety of shops, restaurants, and cultural attractions.

This property is chain-free, allowing for a smooth and straightforward purchasing process. Whether you are looking to invest in your first home or seeking a convenient city base, this apartment presents an excellent opportunity. With its modern amenities and prime location, it is sure to appeal to a wide range of buyers. Don't miss the chance to make this lovely apartment your new home in Plymouth.



Secure Communal Entrance

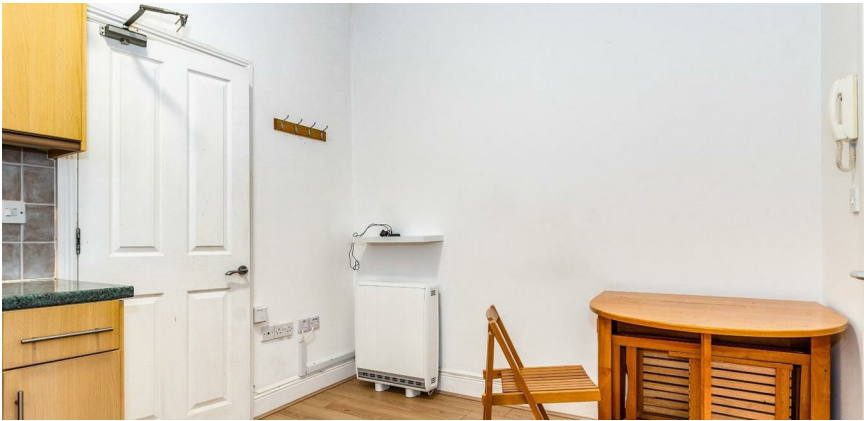
Kitchen/Dining/Lounge Area 12'2" x 8'8" (3.72m x 2.65m)

Bedroom 12'5" x 11'11" (3.79m x 3.64m)

Bathroom

Roof Terrace

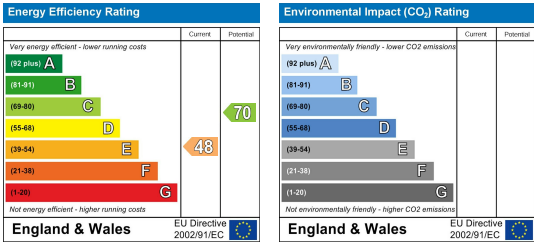
Area Map



Floor Plans



Energy Efficiency Graph



These particulars, whilst believed to be accurate are set out as a general outline only for guidance and do not constitute any part of an offer or contract. Intending purchasers should not rely on them as statements of representation of fact, but must satisfy themselves by inspection or otherwise as to their accuracy. No person in this firm's employment has the authority to make or give any representation or warranty in respect of the property.

2 Old Town Street, Plymouth, PL1 1DP
Tel: 01752421911 Email: sales@stayclever.co.uk <https://www.stayclever.co.uk>