

# clever



## 8 Valletort Road

Stoke, Plymouth, PL1 5PH

**Offers over £375,000**



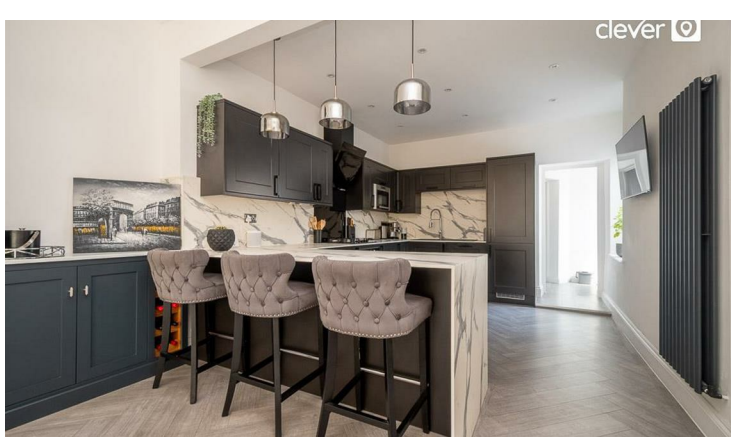
Located on Valletort Road in the charming area of Stoke, this stunning end-terrace house, built in 1900, offers a delightful blend of period features and modern living. Spanning an impressive 1,528 square feet, this property is perfect for families or those who enjoy entertaining.

Upon entering, you are greeted by two spacious reception rooms/bedroom 4 that provide ample space for relaxation and social gatherings. The versatile layout allows for various configurations to suit your lifestyle, whether you prefer a formal dining area or a cosy sitting room. The wood-burning stove adds a touch of warmth and character, making it an inviting space during the cooler months.

The house boasts four well-proportioned bedrooms, providing plenty of room for family members or guests. With two bathrooms, morning routines will be a breeze, ensuring convenience for everyone in the household.

Situated within a conservation area, this property not only offers a beautiful home but also the charm of a well-preserved neighbourhood. The surrounding area is rich in history and character, making it a lovely place to live.

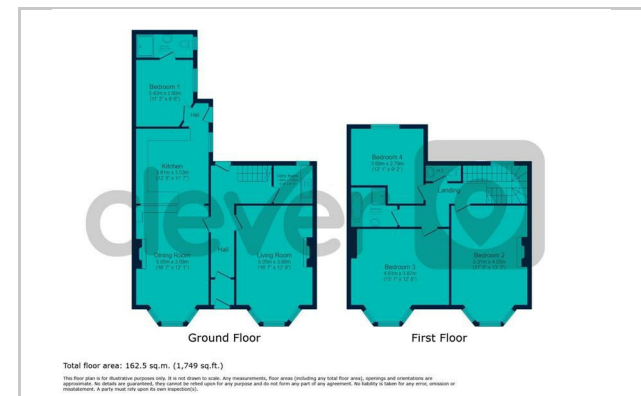




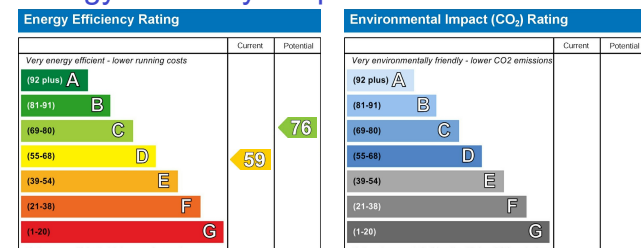
## Area Map



## Floor Plans



## Energy Efficiency Graph



These particulars, whilst believed to be accurate are set out as a general outline only for guidance and do not constitute any part of an offer or contract. Intending purchasers should not rely on them as statements of representation of fact, but must satisfy themselves by inspection or otherwise as to their accuracy. No person in this firm's employment has the authority to make or give any representation or warranty in respect of the property.