

clever



7 Kathleaven Street

St Budeaux, Plymouth, PL5 1QA

£190,000

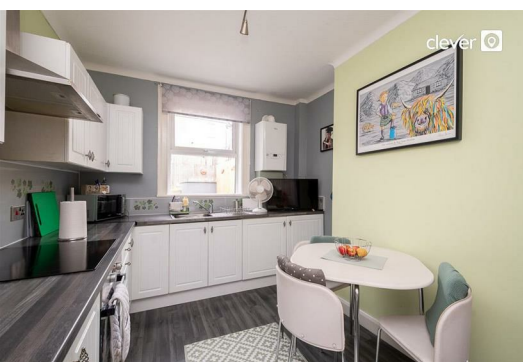


Located on Kathleaven Street, St Budeaux, is this delightful mid-terrace house offers a perfect blend of modern living and classic character. Built in 1910, the property has been meticulously maintained and is presented in excellent condition, making it an ideal choice for families or first-time buyers.

Spanning an impressive 990 square feet, the home features a spacious reception room that welcomes you with warmth and light, perfect for both relaxation and entertaining. The modern kitchen is a standout feature, equipped with contemporary fittings that cater to all your culinary needs. Adjacent to the kitchen, you will find a convenient utility room & downstairs bathroom. The lovely bathroom is designed with comfort in mind, offering a serene retreat at the end of a long day.

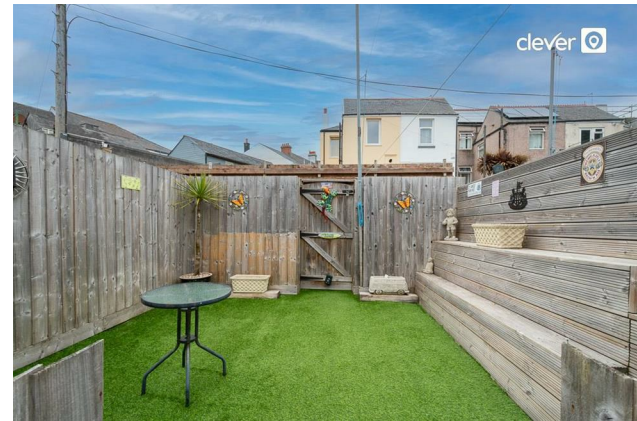
The property boasts three well-proportioned bedrooms, providing ample space for family members or guests.

Situated in a great location, this home benefits from easy access to local amenities, schools, and parks, making it a wonderful place to settle down. Whether you are looking to enjoy the vibrant community of Plymouth or simply seeking a comfortable and stylish home, this property is sure to impress. Don't miss the opportunity to make this charming house your new home.





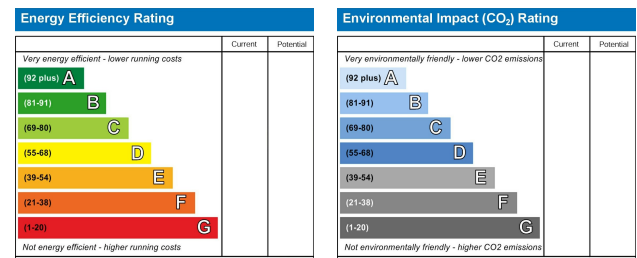
Area Map



Floor Plans



Energy Efficiency Graph



These particulars, whilst believed to be accurate are set out as a general outline only for guidance and do not constitute any part of an offer or contract. Intending purchasers should not rely on them as statements of representation of fact, but must satisfy themselves by inspection or otherwise as to their accuracy. No person in this firm's employment has the authority to make or give any representation or warranty in respect of the property.

2 Old Town Street, Plymouth, PL1 1DP
 Tel: 01752421911 Email: sales@stayclever.co.uk <https://www.stayclever.co.uk>