

# clever



## 55 Clittaford Road

Southway, Plymouth, PL6 6DT

**£200,000**



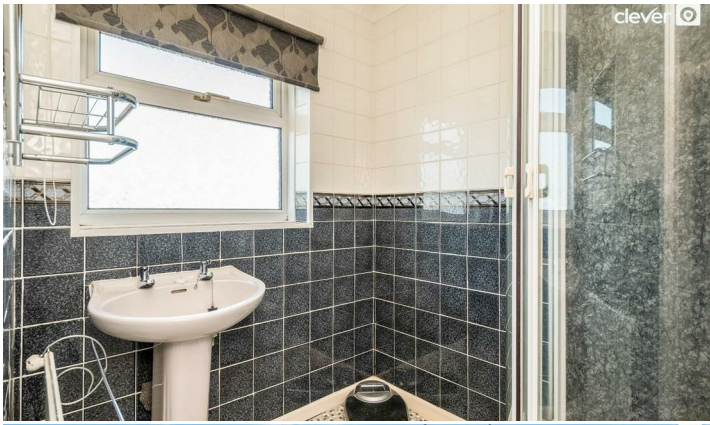
Situated prominently on Clittaford Road in the sought after area Southway, this charming end-terrace house presents a wonderful opportunity for first-time buyers. With three well-proportioned bedrooms, this property is perfect for those looking to establish their own home in a popular and welcoming neighbourhood.

The house features a comfortable large reception room, ideal for relaxing or entertaining guests. The layout offers excellent potential for modernisation, allowing you to put your personal stamp on the space and create a home that truly reflects your style. While the property is in need of some updating, this presents a unique chance to transform it into your dream residence.

Situated in a popular residential location, you will benefit from easy access to local amenities, schools, and parks, making it an ideal choice for families or individuals alike. The surrounding area is known for its community spirit and convenience, ensuring that you will feel right at home.

This property is not just a house; it is a canvas waiting for your vision. With its excellent potential and prime location, it is a fantastic opportunity for those looking to invest in their future. Don't miss out on the chance to make this house your home.

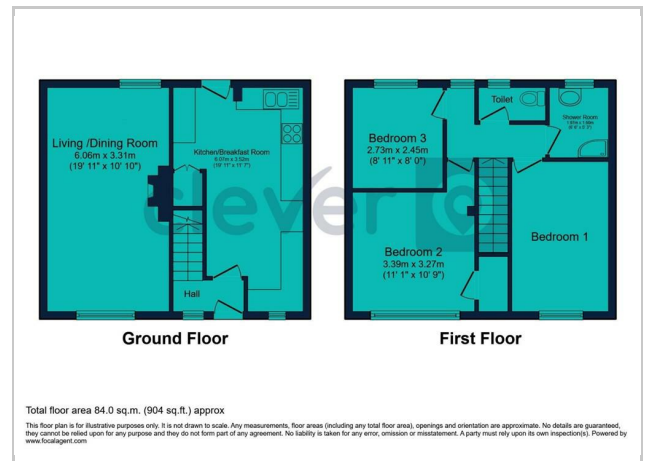




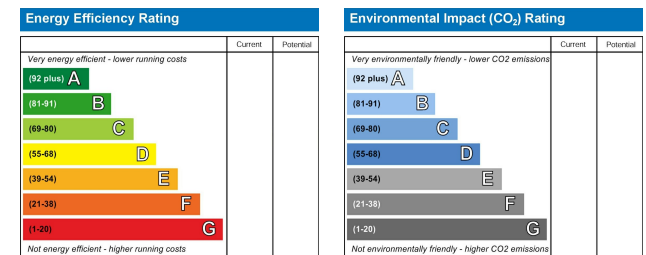
## Area Map



## Floor Plans



## Energy Efficiency Graph



These particulars, whilst believed to be accurate are set out as a general outline only for guidance and do not constitute any part of an offer or contract. Intending purchasers should not rely on them as statements of representation of fact, but must satisfy themselves by inspection or otherwise as to their accuracy. No person in this firm's employment has the authority to make or give any representation or warranty in respect of the property.

2 Old Town Street, Plymouth, PL1 1DP

Tel: 01752421911 Email: sales@stayclever.co.uk <https://www.stayclever.co.uk>