

clever



16 Kestor Close

North Prospect, Plymouth, PL2 2LT

Offers in excess of £210,000

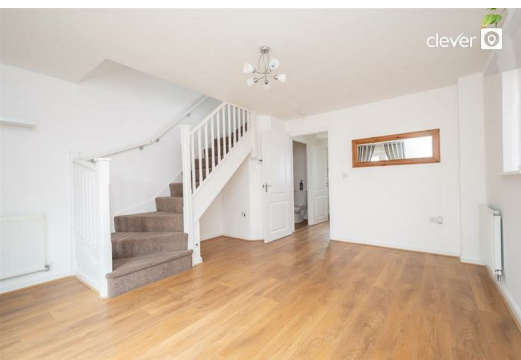


Welcome to this charming semi-detached house located in the desirable Kestor Close, Plymouth. This delightful property boasts a well-maintained interior and is presented in show home condition, making it an ideal choice for those seeking a move-in ready home.

The house features a spacious reception room that provides a warm and inviting atmosphere, perfect for relaxing or entertaining guests. With two comfortable bedrooms, this property is well-suited for small families, couples, or individuals looking for extra space. The bathroom is conveniently located, and there is an additional downstairs w/c for added convenience.

One of the standout features of this home is the lovely rear garden, which offers a peaceful outdoor space to enjoy. Whether you wish to cultivate a garden, host summer barbecues, or simply unwind in the fresh air, this garden is sure to impress.

Parking is made easy with allocated space for one vehicle, ensuring you have a secure spot for your car in this popular residential area. Kestor Close is known for its friendly community and proximity to local amenities,

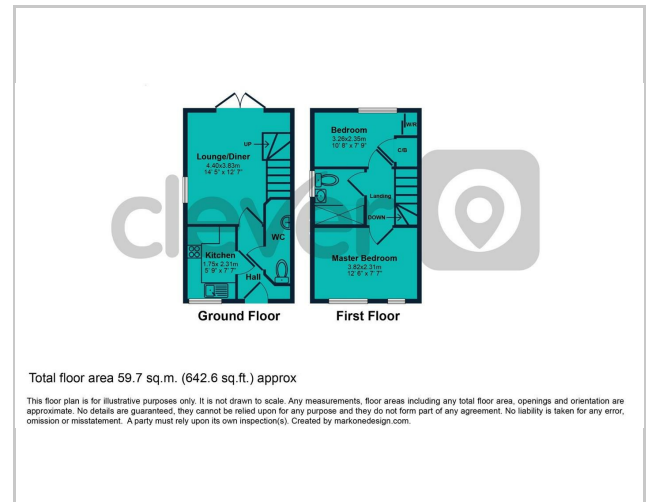




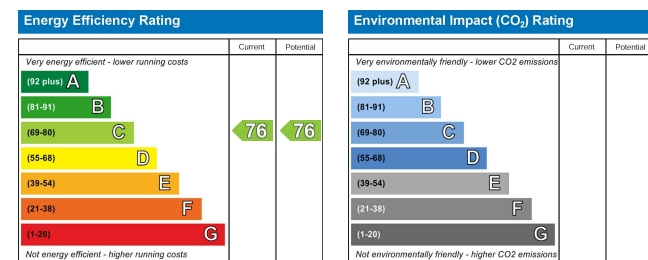
Area Map



Floor Plans



Energy Efficiency Graph



These particulars, whilst believed to be accurate are set out as a general outline only for guidance and do not constitute any part of an offer or contract. Intending purchasers should not rely on them as statements of representation of fact, but must satisfy themselves by inspection or otherwise as to their accuracy. No person in this firm's employment has the authority to make or give any representation or warranty in respect of the property.

2 Old Town Street, Plymouth, PL1 1DP

Tel: 01752421911 Email: sales@stavclever.co.uk <https://www.stavclever.co.uk>