

clever



61 Tresillian Street

, Plymouth, PL4 0QP

£200,000



Nestled on the charming Tresillian Street in Plymouth, this delightful end-terrace Victorian house offers a perfect blend of character and modern living, the property has also had new electrics & heating system. Built in 1900, the property boasts a double-fronted design that enhances its curb appeal and invites you into a warm and welcoming home.

Spanning an impressive 893 square feet, this residence features three well-proportioned bedrooms, providing ample space for families. The two reception rooms are versatile and can be tailored to suit your lifestyle, whether you envision a cosy sitting room for relaxation or a vibrant space for entertaining friends and family.

The property is ideally situated in a great central location, ensuring that you are never far from the amenities and attractions that Plymouth has to offer. With local shops, parks, and schools within easy reach, this home is perfect for those who appreciate convenience and community.

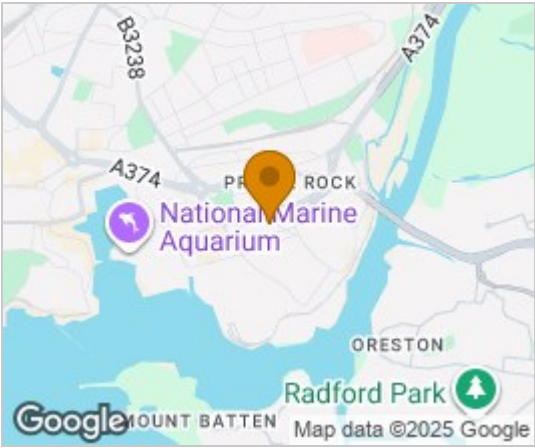
The bathroom is functional and well-maintained, catering to the needs of modern living while retaining the charm of its Victorian roots. This home is a wonderful opportunity for anyone looking to embrace the character



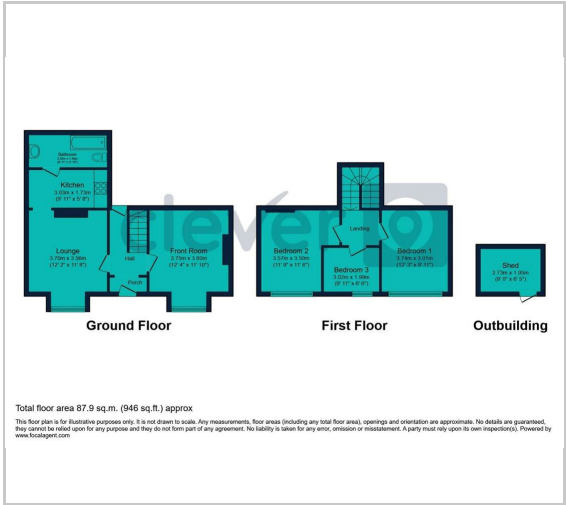
Lounge 12'4" x 11'10" (max) (3.76m x 3.61m (max))
Dining Room 12'4" x 11'6" (max) (3.76m x 3.53 (max))
Kitchen 11'6" x 5'6" (3.53m x 1.68m)
Bedroom 12'2" x 11'6" (3.73m x 3.53m)
Bedroom 12'2" x 10'7" (3.73m x 3.23m)
Bedroom 9'8" x 6'5" (2.97m x 1.96m)



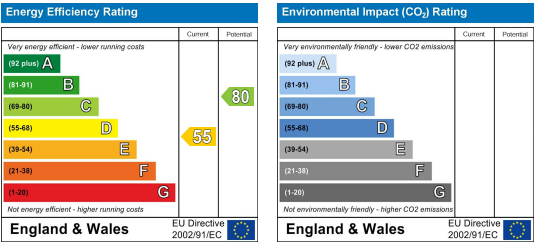
Area Map



Floor Plans



Energy Efficiency Graph



These particulars, whilst believed to be accurate are set out as a general outline only for guidance and do not constitute any part of an offer or contract. Intending purchasers should not rely on them as statements of representation of fact, but must satisfy themselves by inspection or otherwise as to their accuracy. No person in this firms employment has the authority to make or give any representation or warranty in respect of the property.