

clever



Flat 3, Room 2 10 Lisson Grove

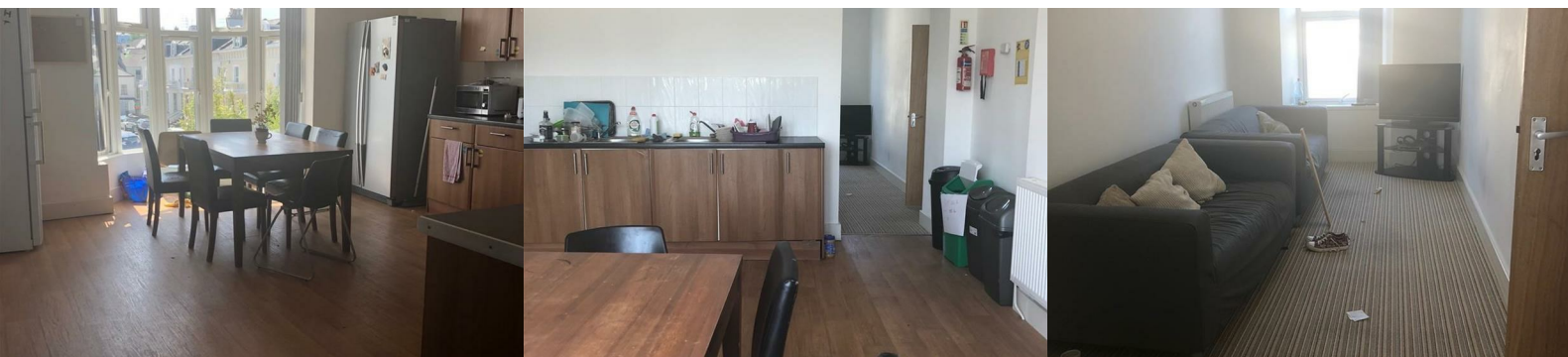
, Plymouth, PL4 7DN

£591



GROVE HOUSE is a secret tranquil treasure hidden in the bustling Mutley Plain area. It has an Old Skool Manor feel house turned into stylish en-suite apartments. Free parking on the grounds personal driveway with beautiful garden and views around the back of the estate complete with BBQ for the summer. The apartment includes very spaciousin fact huge kitchen complete with American style fridge/freezers, 2 large cookers & everything else required to cook up a storm in the kitchen. All rooms are en-suite and are a great option if you are looking for en-suite on a budget. Less than 10 minutes walk from Plymouth College of Art, University of Plymouth & located on Mutley Plain which is on a main bus route to Marjons University & Derriford . Mutley Plain has an array of local supermarkets, bars & coffee shops all a stones throw away.

One room available in flat 3 for March 2022.



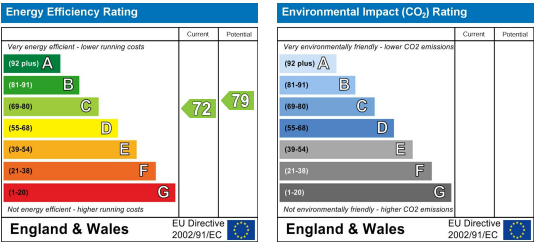
Area Map



Floor Plans



Energy Efficiency Graph



These particulars, whilst believed to be accurate are set out as a general outline only for guidance and do not constitute any part of an offer or contract. Intending purchasers should not rely on them as statements of representation of fact, but must satisfy themselves by inspection or otherwise as to their accuracy. No person in this firm's employment has the authority to make or give any representation or warranty in respect of the property.