

clever



13 St. Lawrence Road

, Plymouth, PL4 6HN

£120 Per week



Welcome to St. Lawrence Road, Plymouth - a stunning Victorian property that boasts 9 spacious bedrooms and 3 modern bathrooms. This glorious house offers ample communal space, including a large kitchen and a separate living room, perfect for entertaining guests or simply relaxing after a long day. Each room is generously sized, ensuring comfort and privacy for all residents.

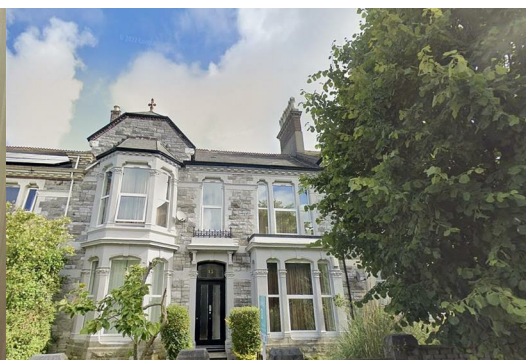
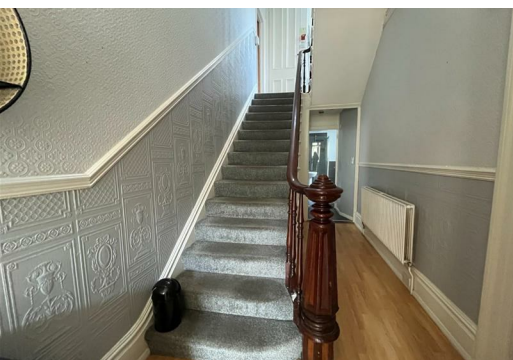
Situated at the top of North Hill, this property is conveniently located near the University and Plymouth College of Art, making it an ideal home for students looking to immerse themselves in the vibrant student life that Plymouth has to offer. Additionally, the property features a good-sized garden where you can unleash your green thumb and grow your own vegetables, adding a touch of nature to your urban lifestyle.

Don't miss out on this fantastic opportunity to live in a spacious Victorian house in a prime location. Whether you're a student looking for a comfortable and convenient place to stay, or a family seeking a charming home with plenty of room to grow, this property has something for everyone. Book a viewing today and experience the charm and potential that this property has to offer.

Rooms from £120 per week

Gas, electric water and WIFI included! (fair usage policy applies)

Council tax band D



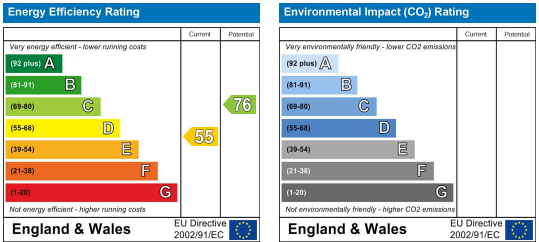
Area Map



Floor Plans



Energy Efficiency Graph



These particulars, whilst believed to be accurate are set out as a general outline only for guidance and do not constitute any part of an offer or contract. Intending purchasers should not rely on them as statements of representation of fact, but must satisfy themselves by inspection or otherwise as to their accuracy. No person in this firms employment has the authority to make or give any representation or warranty in respect of the property.