

# clever



## 25 Mildmay Street

, Plymouth, PL4 8NE

**£630 Per month**

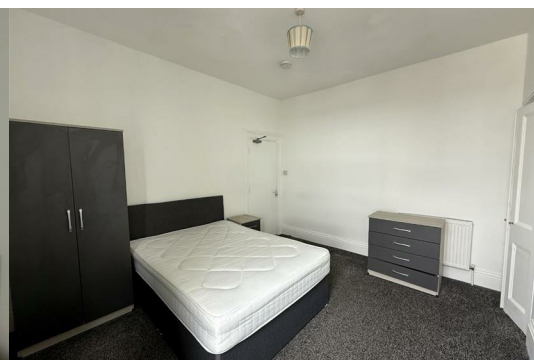
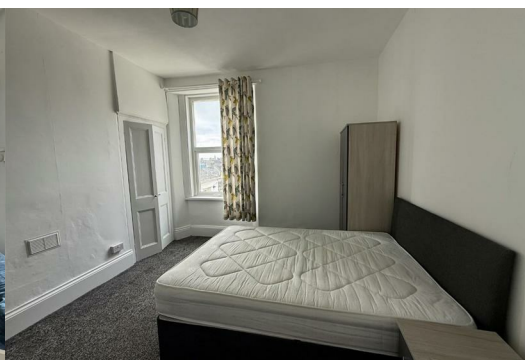


\*\*\*2 ENSUITE BEDROOMS AVAILABLE IN MODERN 4 BEDROOM HOUSE\*\*\*

\*\*\*FULLY FURNISHED\*\*\*

Nestled in the heart of Plymouth on the charming Mildmay Street, this exquisite terraced house offers a perfect blend of modern living and historical charm. Built in 1880, the property boasts a generous 1,571 square feet of well-designed space, making it an ideal family home or a lucrative investment opportunity.

Upon entering, you are greeted by two spacious reception rooms that provide ample space for relaxation and entertaining. The heart of the home features four large ensuite bedrooms, each designed with comfort and privacy in mind. The modern bathrooms are equipped with contemporary fixtures, ensuring a luxurious experience for all residents and guests.



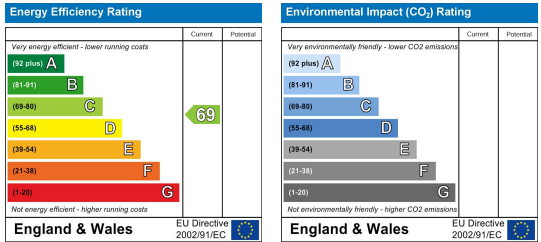
## Area Map



## Floor Plans



## Energy Efficiency Graph



These particulars, whilst believed to be accurate are set out as a general outline only for guidance and do not constitute any part of an offer or contract. Intending purchasers should not rely on them as statements of representation of fact, but must satisfy themselves by inspection or otherwise as to their accuracy. No person in this firm's employment has the authority to make or give any representation or warranty in respect of the property.