

# clever



## Flats 2 & 3 10 Lisson Grove

, Plymouth, PL4 7DN

**£134 Per week**

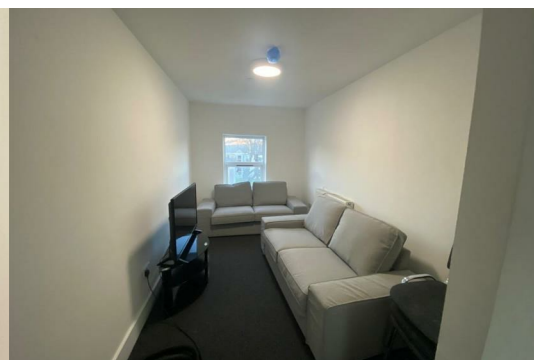


Availability now and 1st September 2026!

Welcome to Grove House, a newly refurbished six-bedroom apartment located in the vibrant area of Mutley Plain, Plymouth. This exceptional property offers a perfect blend of modern living and convenience, making it an ideal choice for those seeking a comfortable and stylish home.

As you enter this impressive flat, you will be greeted by a spacious reception room that serves as a welcoming communal space for relaxation and socialising. The large communal area is perfect for gatherings, study sessions, or simply unwinding after a long day. Each of the six bedrooms is thoughtfully designed with an ensuite bathroom, ensuring privacy and comfort for every resident.

The property boasts a convenient location, placing you within easy reach of local amenities, shops, and public transport links, making your daily commute a breeze. Additionally, parking is available, which is a valuable asset in this bustling area.



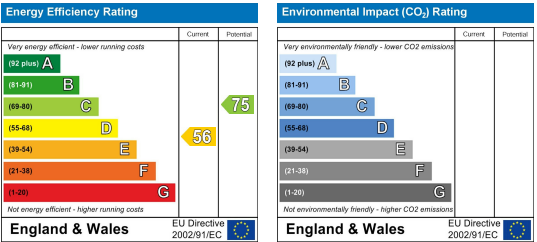
## Area Map



## Floor Plans



## Energy Efficiency Graph



These particulars, whilst believed to be accurate are set out as a general outline only for guidance and do not constitute any part of an offer or contract. Intending purchasers should not rely on them as statements of representation of fact, but must satisfy themselves by inspection or otherwise as to their accuracy. No person in this firm's employment has the authority to make or give any representation or warranty in respect of the property.