

# clever



## Flat 2 1 Quaker Lane

, Plymouth, PL3 4FA

**£1,000 Per month**



\*\*\*AVAILABLE 3rd September 2025 \*\*\*

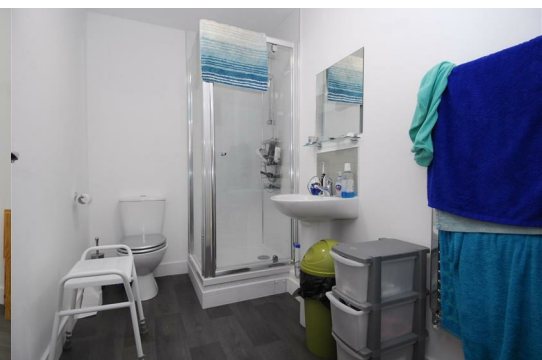
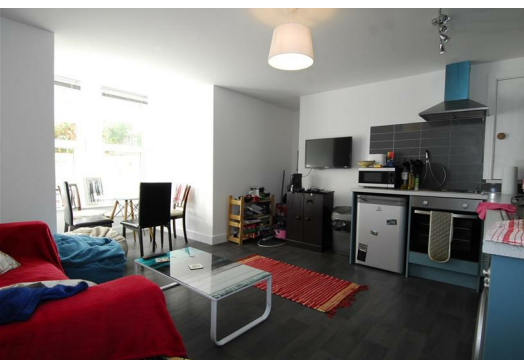
This apartment is a FULLY FURNISHED MODERN and SPACIOUS, featuring a MODERN open plan kitchen/ lounge with a lovely SPACIOUS bedroom.

The apartment is located in a fantastic spot just off Mutley Plain and is less than 10 minutes away from both Plymouth University and the train station. Furthermore, it is conveniently situated near bus routes to Marjon, Derriford, and the City Centre.

One of the standout features of this property is the convenience of parking. No more circling the block searching for a spot - you'll have your own designated parking space right at your doorstep.

This property is also suitable for dual occupancy and is £1000 per month Inclusive of water and Broadband.

Rent £1000 pcm Deposit £1000 Council Tax A EPC C



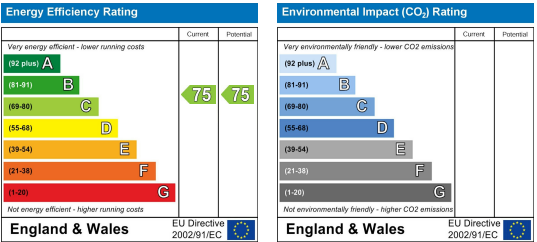
Area Map



Floor Plans



Energy Efficiency Graph



These particulars, whilst believed to be accurate are set out as a general outline only for guidance and do not constitute any part of an offer or contract. Intending purchasers should not rely on them as statements of representation of fact, but must satisfy themselves by inspection or otherwise as to their accuracy. No person in this firms employment has the authority to make or give any representation or warranty in respect of the property.