



## 9 Tollesbury Court

Hutton, Brentwood, CM13 1DE

**Offers Over £275,000**



Smooth Move Estates are pleased to present this spacious & affordable 3-Bedroom ground floor maisonette in Hutton, Brentwood!

Looking for space, style, and a great location without the high price tag? This bright and airy maisonette ticks every box!

Generous lounge/diner - Modern fitted kitchen & family bathroom - Three ample sized bedrooms

Gas central heating & double glazing - Communal outside area including play area & residents' parking Sought after location just 1.1 miles from Shenfield Station (Elizabeth Line) - Close to local shops, desirable schools & Hutton Country Park.

Within catchment to Long Ridings Primary School and St Martins Senior School.

Excellent value for families, first-time buyers & investors - Spacious, affordable and convenient.

Call Smooth Move Estates today to arrange your viewing on 01277 600 700



Hallway

Spacious hallway with wooden floor and ample storage leading to kitchen, lounge/diner, stairs and downstairs WC with front aspect window.

Kitchen

Fully fitted with a range of cream base and eye level cupboards with tile splash-back, electric oven, induction hob, extractor. boiler, wood effect vinyl flooring. Window to front aspect.

Lounge Diner

A light and airy room painted cream, upvc double glazed windows, 2 radiators, beige carpet, ample space for dining table

Bathroom

Bath with shower over, WC, basin with cupboard under, vinyl floor, opaque window

Flrst Floor Landing

Radiator, 2 storage cupboards

Bedroom 1 - Double

Fitted cupboard, painted cream, plum coloured carpet, window, radiator

Bedroom 2 - Double

Fitted cupboard, painted cream, cream carpet, window, radiator

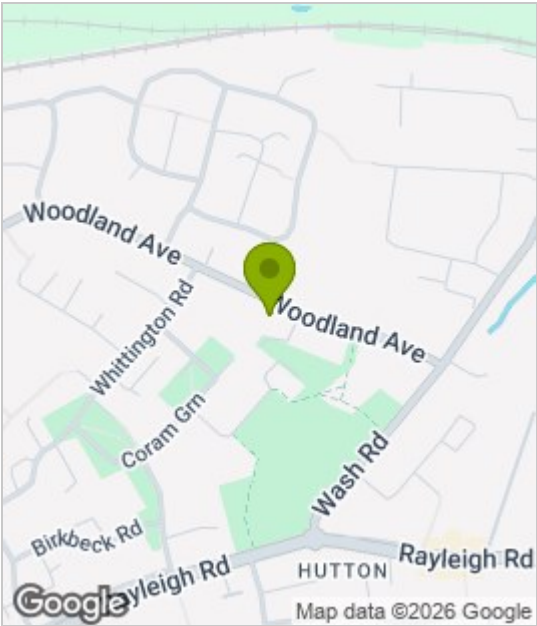
Bedroom 3

Painted cream with beige carpet, window and radiator

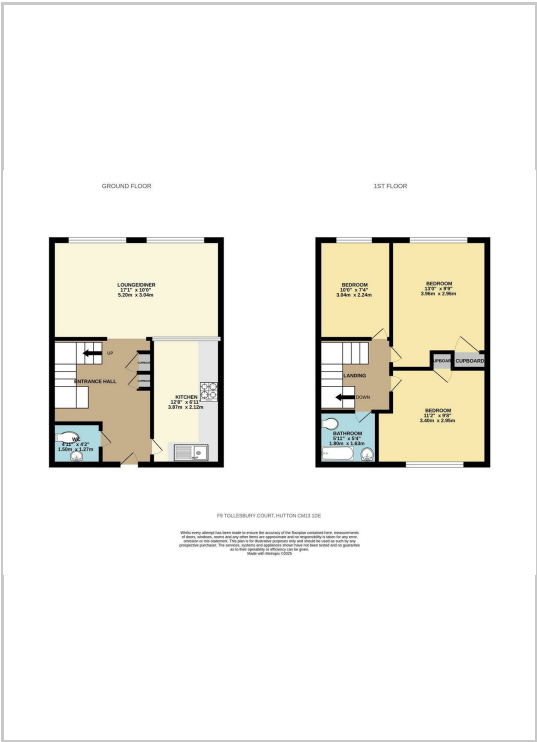
Outside Space to Front

Small patio/terrace area

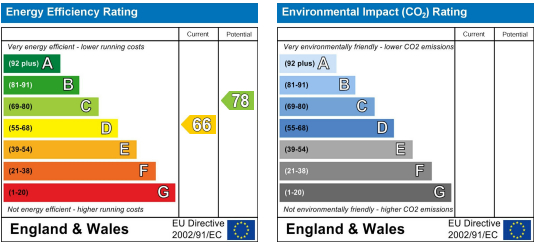
Area Map



Floor Plans



Energy Efficiency Graph



These particulars, whilst believed to be accurate are set out as a general outline only for guidance and do not constitute any part of an offer or contract. Intending purchasers should not rely on them as statements of representation of fact, but must satisfy themselves by inspection or otherwise as to their accuracy. No person in this firms employment has the authority to make or give any representation or warranty in respect of the property.