

TO LET

Groveley Road, Sunbury-On-Thames, TW16 7JZ
£1,100 Per Calendar Month

DBK
ESTATE AGENTS

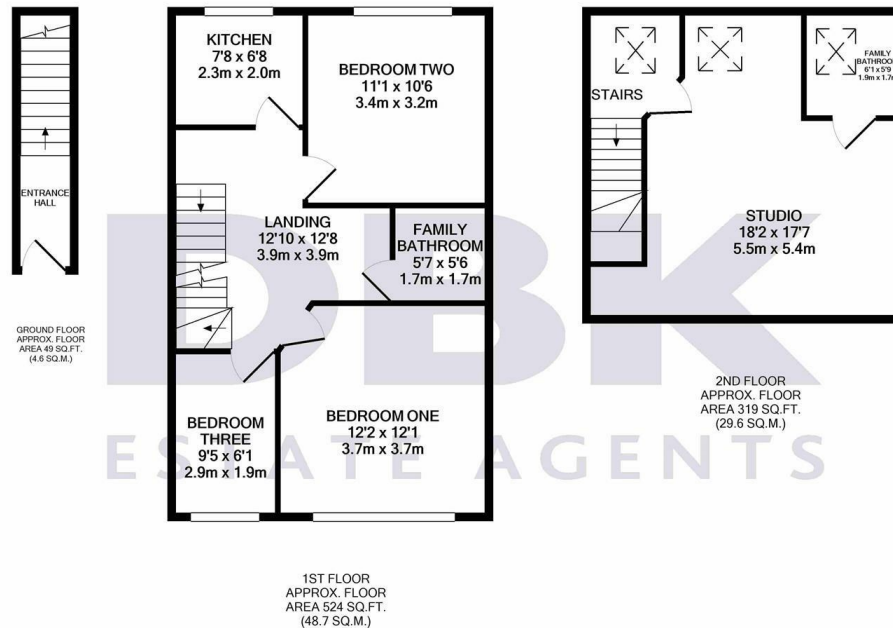
- Available To Rent Immediately!
- Stylish Kitchen with Integrated Appliances
- Gas Central Heating
- Prime Location
- Sunbury Railway 0.8 miles
- Self-Contained Studio Apartment
- Chic Shower Suite
- Fitted Wardrobes
- Rent Inclusive of all Bills!
- Kempton Park Racecourse 0.8 miles

THE PROPERTY

Available To Rent Immediately! All Bills Included!

A fine illustration of a self-contained studio flat finished to the highest of standards with no cost spared. Accommodation boasts of a good sized living space, a chic kitchen with integrated appliances and a stylish bathroom suite. Further attributes include brand new wooden flooring, gas central heating and double-glazed windows.

Sited on this convenient location in the midst of many local amenities. For motorists, the M3, A308 and A316 can be found within a short drive and for those travelling to The City, Sunbury Station is located within 0.6 miles.



Whilst every attempt has been made to ensure the accuracy of the floor plan contained here, measurements of doors, windows, rooms and any other items are approximate and no responsibility is taken for any error, omission, or mis-statement. This plan is for illustrative purposes only and should be used as such by any prospective purchaser. The services, systems and appliances shown have not been tested and no guarantee as to their operability or efficiency can be given
Made with Metropix ©2020