



TO LET

St. Thomas Road, Chiswick, W4 3LD
£1,650 Per Calendar Month

DBK
ESTATE AGENTS

- Available To Rent Immediately!
- One Double Bedroom
- Chic Fitted Kitchen
- Internal Storage Options
- Street Parking - Permit Required
- Modernised First Floor Apartment
- Reception Room with Juliet Balcony
- Stylish Family Bathroom Suite
- Communal Gardens
- Circa 389 Sq.Ft

THE PROPERTY

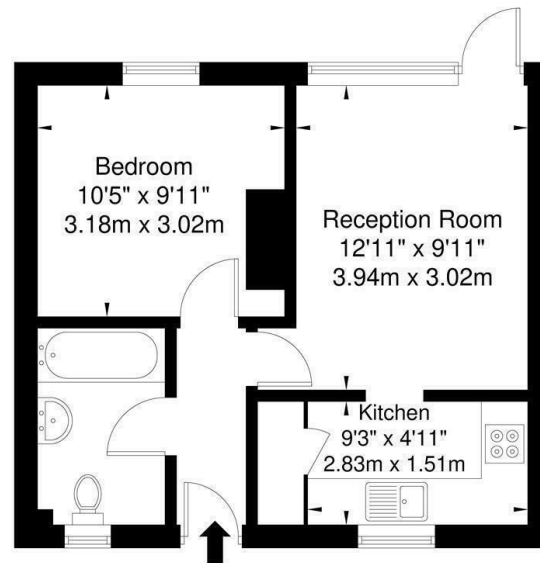
Available immediately, this modernised first floor apartment offers approximately 389 sq. ft. of well-designed living space, ideal for single occupants or couples.

The property features a spacious double bedroom, a bright reception room with a Juliet balcony allowing for plenty of natural light and a chic fitted kitchen with contemporary finishes. A stylish family bathroom suite completes the accommodation, along with useful internal storage options.

Externally, residents can enjoy access to communal gardens, while street parking is available via permit.

Ideally positioned for both convenience and lifestyle, the property is within easy reach of Chiswick High Road, offering a wide selection of cafés, restaurants, boutiques and everyday amenities. Excellent transport links are nearby, including Turnham Green and Stamford Brook Underground stations (District Line), providing direct access into Central London. The area is also well regarded for its green spaces, with Chiswick House & Gardens and the River Thames both within close proximity, making it an ideal location for families and professionals alike.

Approx. Gross Internal Area = 36.2 sq m / 389 sq ft



The Floor plan is not to scale and measurements and areas shown are approximate and therefore should be used for illustrative purposes only. The plan has been prepared in accordance with the RICS code of Measuring Practice and whilst we have confidence in the information produced it must not be relied on. If there is any aspect of particular importance, you should carry out or commission your own inspection of the property.
Copyright © BLEUPLAN