

# TO LET

Groveley Road, Sunbury-On-Thames, TW16 7JZ  
£900 Per Calendar Month

**DBK**  
ESTATE AGENTS

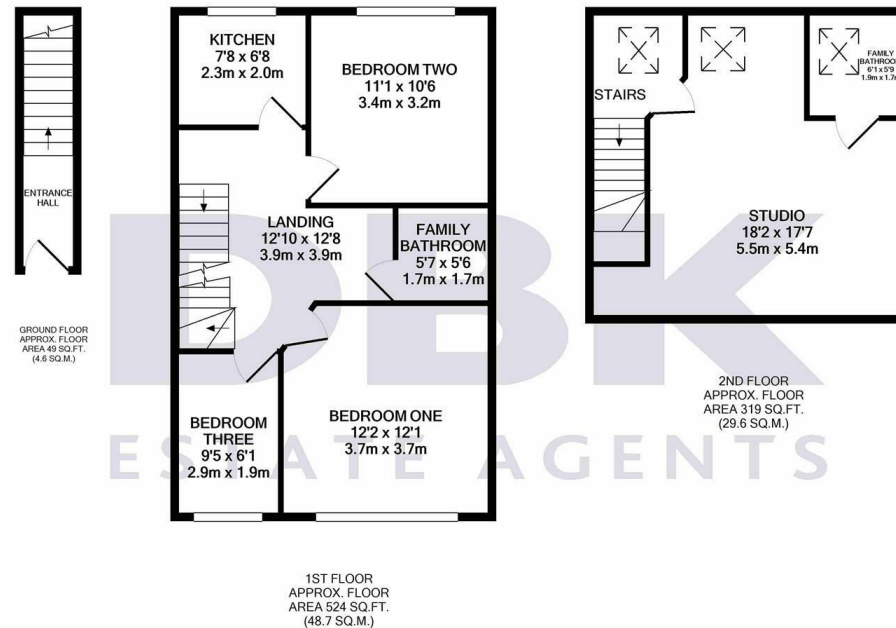
- Available To Rent Immediately!
- Modern Double Room
- Stylish shared Kitchen with Integrated Appliances
- Chic Shower Suite
- Gas Central Heating
- Fitted Wardrobes
- Rent Inclusive of all Bills!
- Prime Location
- Sunbury Railway 0.8 miles
- Kempton Park Racecourse 0.8 miles

## THE PROPERTY

Available To Rent Immediately! Rent Inclusive of all Bills!

A fine illustration of a Double Room finished to the highest of standards with no cost spared. A good sized double room with fitted wardrobes, with use of a shared chic kitchen with integrated appliances and a stylish bathroom suite. Further attributes include brand new wooden flooring, gas central heating and double-glazed windows.

Sited on this convenient location in the midst of many local amenities. For motorists, the M3, A308 and A316 can be found within a short drive and for those travelling to The City, Sunbury Station is located within 0.6 miles.



1ST FLOOR  
APPROX. FLOOR  
AREA 524 SQ.FT.  
(48.7 SQ.M.)

TOTAL APPROX. FLOOR AREA 892 SQ.FT. (82.9 SQ.M.)

Whilst every attempt has been made to ensure the accuracy of the floor plan contained here, measurements of doors, windows, rooms and any other items are approximate and no responsibility is taken for any error, omission, or mis-statement. This plan is for illustrative purposes only and should be used as such by any prospective purchaser. The services, systems and appliances shown have not been tested and no guarantee as to their operability or efficiency can be given

Made with Metropix ©2020