



TO LET

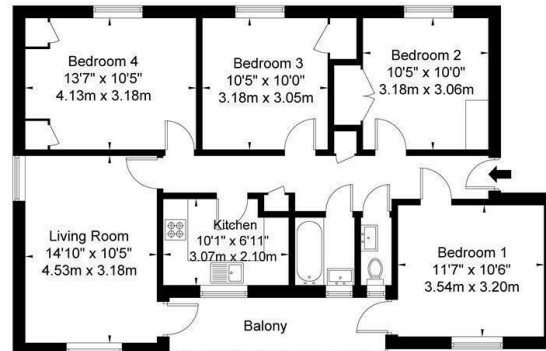
The Mall, Boston Manor Road, Brentford, TW8 8DJ
£2,500 Per Calendar Month

DBK
ESTATE AGENTS

- Available To Rent Immediately!
- Second Floor Apartment
- Four Sizeable Bedrooms
- Modern Fitted Kitchen
- Reception Room
- Stylish Family Bathroom with Separate WC
- Private Terrace
- Secure Entry System
- Prime Location
- Walking Distance To Brentford Station

The Mall, Boston Manor Road Brentford TW8 8DJ

Approx Gross Internal Area = 84.6 sq m / 910 sq ft



The Floor plan is not to scale and measurements and areas shown are approximate and therefore should be used for illustrative purposes only. The plan has been prepared in accordance with the RICS code of Measuring Practice and whilst we have confidence in the information produced it must not be relied on. If there is any aspect of particular importance, you should carry out or commission your own inspection of the property.
Copyright © BLEUPLAN

THE PROPERTY

Discover spacious, contemporary living in this beautifully presented four-bedroom apartment, ideally situated on the second floor of a well-maintained residential building. Available to rent immediately, this home is perfect for families or professional sharers seeking both comfort and convenience.

Step inside to find four generously proportioned bedrooms, each offering ample space for rest, work, or storage. The heart of the home is a bright and welcoming reception room, ideal for relaxing or entertaining, which seamlessly connects to a modern, fully fitted kitchen. Designed with both style and functionality in mind, the kitchen features sleek cabinetry, integrated appliances, and generous worktop space for meal preparation.

The apartment benefits from a stylish family bathroom finished with contemporary fixtures and fittings, along with a separate WC, providing added practicality for busy households.

A standout feature of the property is the private terrace, offering a rare opportunity to enjoy outdoor space in an urban setting, perfect for morning coffee, alfresco dining, or unwinding after a long day.

Situated in the heart of Brentford, the property offers exceptional convenience and connectivity. Just a 5-minute walk from Brentford Station, with direct links to London Waterloo, the location is ideal for commuters. Nearby stations include Syon Lane, Kew Bridge, and Boston Manor (Piccadilly line), while major roads like the M4 provide swift access to Heathrow and Central London.