

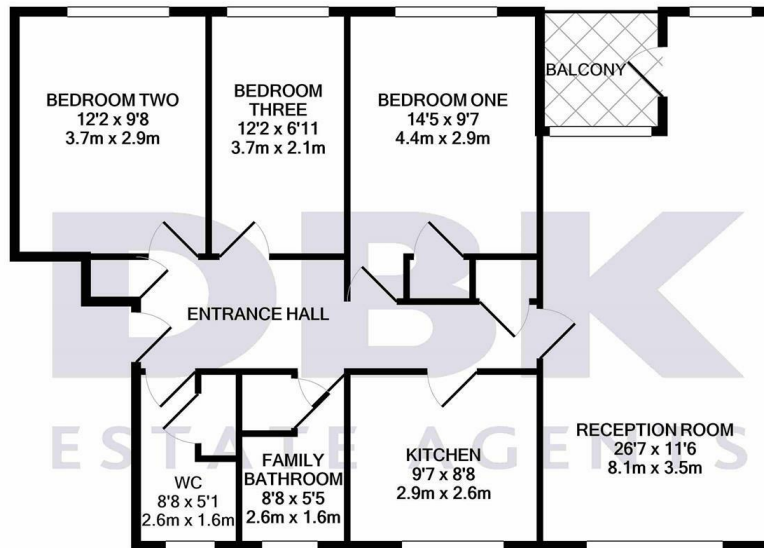


TO LET

Summerwood Road, Isleworth, TW7 7QZ
£1,650 Per Calendar Month

DBK
ESTATE AGENTS

- Available To Rent From Beginning of April!
- Three Sizeable Bedrooms
- Modern Fitted Kitchen
- Secure Entry System
- Twickenham + St Margarets Stations both 0.7 mi
- Larger than Average Apartment of April!
- Large Reception Room with Balcony
- Family Bathroom with Sep. WC
- Parking Available
- Council Tax Band C



TOTAL APPROX. FLOOR AREA 881 SQ.FT. (81.9 SQ.M.)

Whilst every attempt has been made to ensure the accuracy of the floor plan contained here, measurements of doors, windows, rooms and any other items are approximate and no responsibility is taken for any error, omission, or mis-statement. This plan is for illustrative purposes only and should be used as such by any prospective purchaser. The services, systems and appliances shown have not been tested and no guarantee as to their operability or efficiency can be given
Made with Metropix ©2020

THE PROPERTY

Available To Rent From Beginning of April!

A spacious and airy first floor apartment offered with contemporary interior throughout. Accommodation is distributed over 881 sq.ft with three bedrooms, larger than average reception room leading to a private balcony, modern kitchen, family bathroom and separate WC. Supplementary to this is a secure entry system, ample parking for residents and visitors, gas central heating, double glazed windows and storage.

Sited within walking distance to a wealth of local amenities including Tesco Extra as well as Twickenham and St Margarets Stations being sited 0.7 miles from the property connecting commuters to The City. For motorists the A316 and A4 can be found within a short drive. Reputable primary and secondary schools scoring GOOD and OUTSTANDING can be within the catchment area.