



Healum Avenue, Southall, UB2 4WH
£1,850 Per Calendar Month

DBK
ESTATE AGENTS



Healum Avenue, Southall, UB2 4WH £1,850 Per Calendar Month

Available to Rent Immediately! – A Modern Two-Bedroom Apartment in a Sought After Development.

Set within a stylish development completed in 2021, this beautifully finished apartment offers contemporary living with high specifications throughout. Designed to maximise light and space, the home provides a modern layout that perfectly balances comfort with functionality.

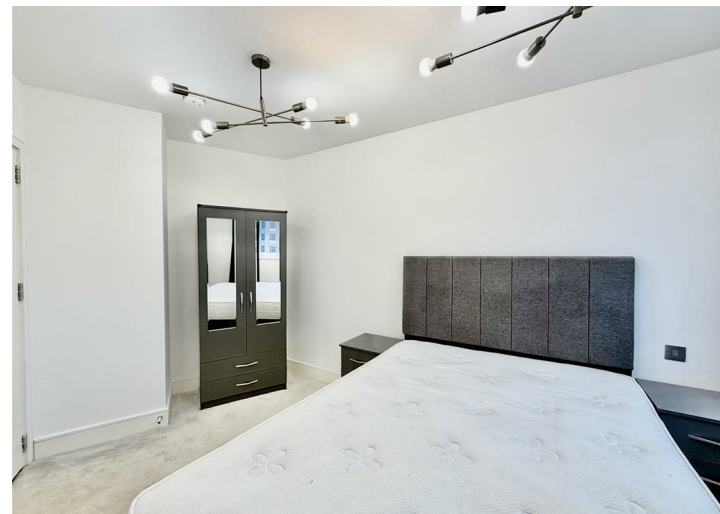
The heart of the property is the bright and airy open plan kitchen, dining, and living area. The modern fitted kitchen features sleek cabinetry and high quality finishes, while full-height windows open out to a private balcony, perfect for relaxing or enjoying alfresco dining.

Two well-proportioned bedrooms offer flexible accommodation, with the principal bedroom benefits from a stylish en-suite shower room. A fashionable family bathroom, designed with modern fittings, further enhances the home's appeal.

Practical features include a secure entry system and well-maintained communal areas. The property also benefits from its superb location, just a short walk from Southall Station (Elizabeth Line), providing fast and convenient links into Central London and Heathrow.

Key Features

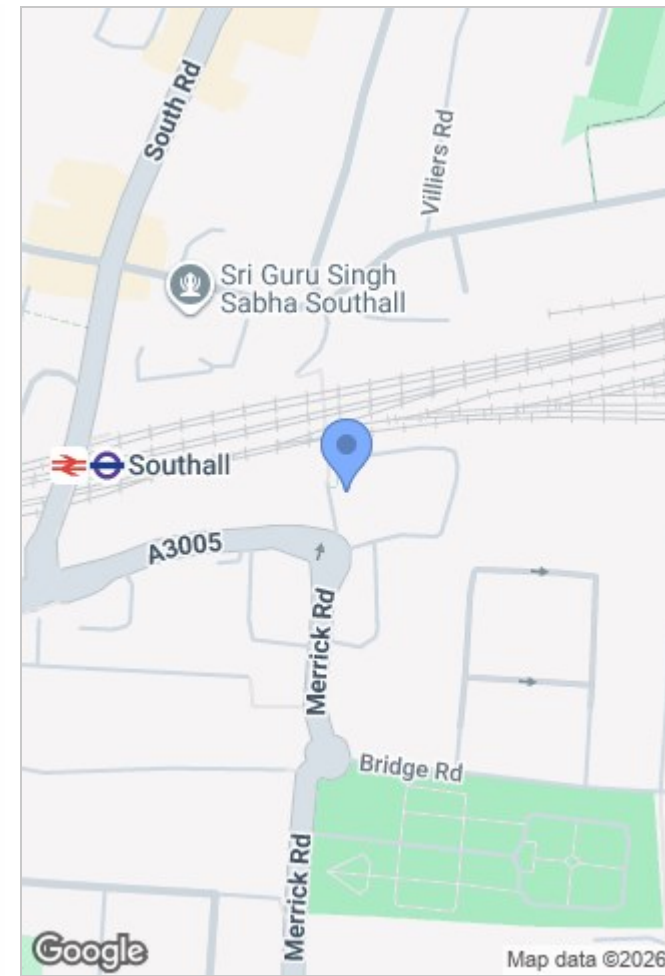
- Available To Rent Immediately!
- Modern Development Completed in 2021
- Finished with High Specifications Throughout
- Two Well Proportioned Bedrooms (Master with Ensuite)
- Bright + Airy Open Plan Kitchen with Diner + Living Area
- Modern Fitted Kitchen with Integrated Appliances
- Fashionable Family Bathroom Suite
 - Private Balcony
 - Secure Entry System
- Walking Distance to Southall Station



Flat 22 Ashwell House, Healum Ave,
Southall, UB2 4WH



Approximate Gross Internal Area
76.63 SQM // 824 SQ FT



Energy Efficiency Rating			
	Current	Potential	
Very energy efficient - lower running costs			
(92 plus) A			
(81-91) B			
(69-80) C			
(55-68) D			
(39-54) E			
(21-38) F			
(1-20) G			
Not energy efficient - higher running costs			
England & Wales	EU Directive 2002/91/EC		

Environmental Impact (CO ₂) Rating			
	Current	Potential	
Very environmentally friendly - lower CO ₂ emissions			
(92 plus) A			
(81-91) B			
(69-80) C			
(55-68) D			
(39-54) E			
(21-38) F			
(1-20) G			
Not environmentally friendly - higher CO ₂ emissions			
England & Wales	EU Directive 2002/91/EC		

South Road, Southall, UB1 1SW
Tel: 0208 571 4646
Email: southall@dbkestates.com
www.dbkestates.com