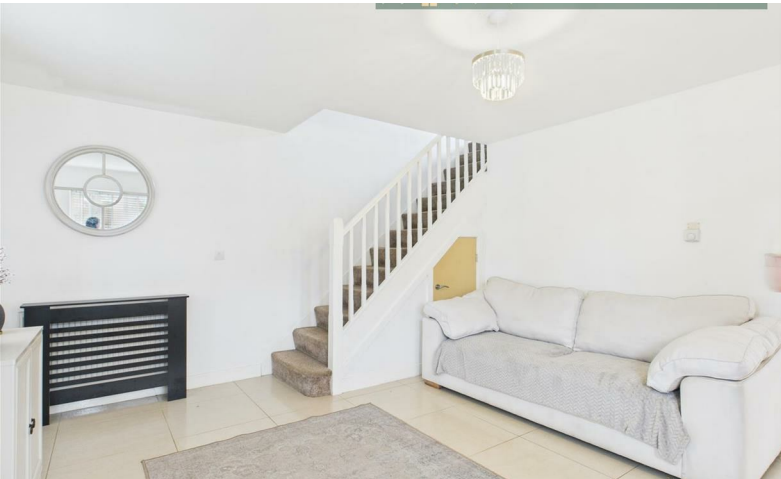




MCDERMOTT & CO

THE PROPERTY AGENTS



£1,200 PCM

38 Abbeydale Road, Manchester, Greater Manchester, M40 0AJ

38 Abbeydale Road, Manchester, Greater Manchester, M40 0AJ

Mcdermott & Co., offer to the rental market this three bedroom semi detached house which is warmed by gas central heating and has double glazed windows. The accommodation briefly comprises of Hallway with downstairs cloaks off, lounge with stairs to the first floor, dining kitchen, to the first floor are three bedrooms and family bathroom. Externally there is a garden to the side accessed by french doors from the dining kitchen and a driveway round the side which leads on to the rear garden. Located just off St Mary's Road, the property is in a fantastic location for amenities and transport links. With ample bus routes nearby the Metrolink is within a 5 minute drive while numerous schools are within easy reach including St Matthew's RC High School and Co-Op Academy Broadhurst.

AVAILABLE NOW

Directions

