



13 Maes Watford, Caerphilly, CF83 1LP
Offers Around £400,000

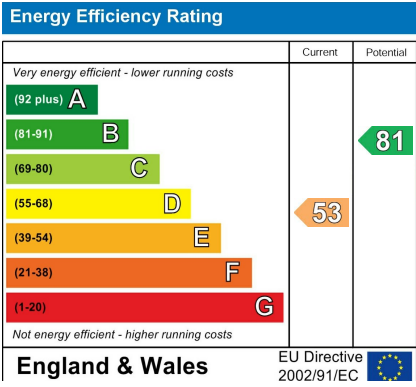
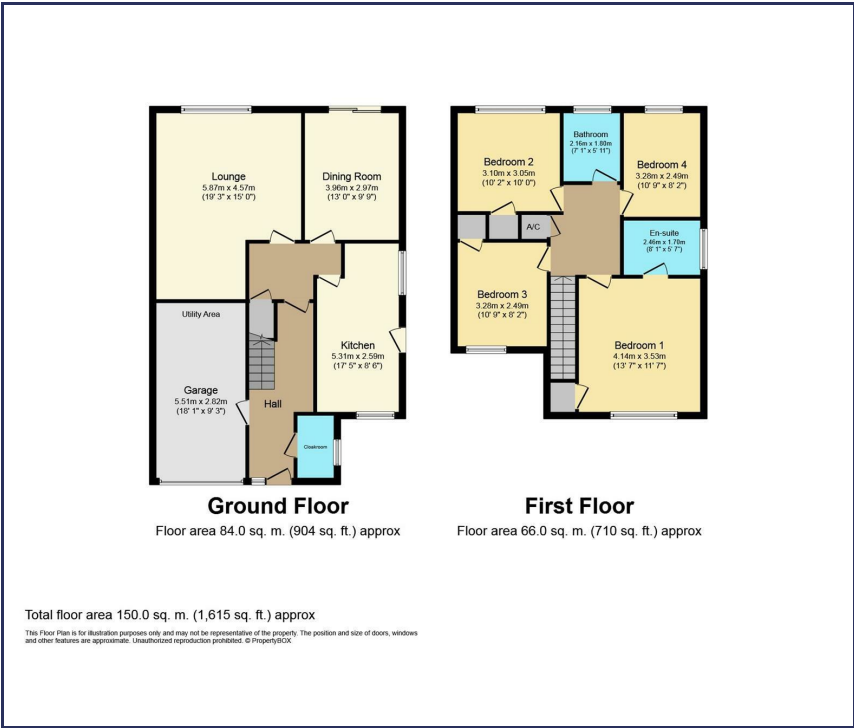
BRINSONS

Rarely available on the property market within this sought after cul-de-sac. This is a generous 4 bed detached home, very well presented on a corner plot with good parking from both its driveway to the front and secure 2 vehicle hardstand at the rear. The bright rooms include a refitted en-suite, re-fitted bathroom as well as the four bedrooms. To the ground floor is a large L shaped lounge with attractive fireplace, a separate dining room, a cloakroom, a re-fitted kitchen and internal access into a 18' x 9' garage having a utility area to the rear.

Gardens are mature and extremely well maintained with the rear having a south facing aspect and offers good privacy.
Gas central heating is installed and the property is double glazed.

It may be possible to offer 'no upper chain'

- Sought after cul-de-sac
 - 4 good size bedrooms
 - 2 reception rooms
 - Drive to integral garage
 - Front and rear garden
- Well proportioned detached home
 - En-suite, family bathroom and cloakroom
 - Re-fitted 17' kitchen
 - Additional secure parking
 - EPC: E



You may download, store and use the material for your own personal use and research. You may not republish, retransmit, redistribute or otherwise make the material available to any party or make the same available on any website, online service or bulletin board of your own or of any other party or make the same available in hard copy or in any other media without the website owner's express prior written consent. The website owner's copyright must remain on all reproductions of material taken from this website.

