

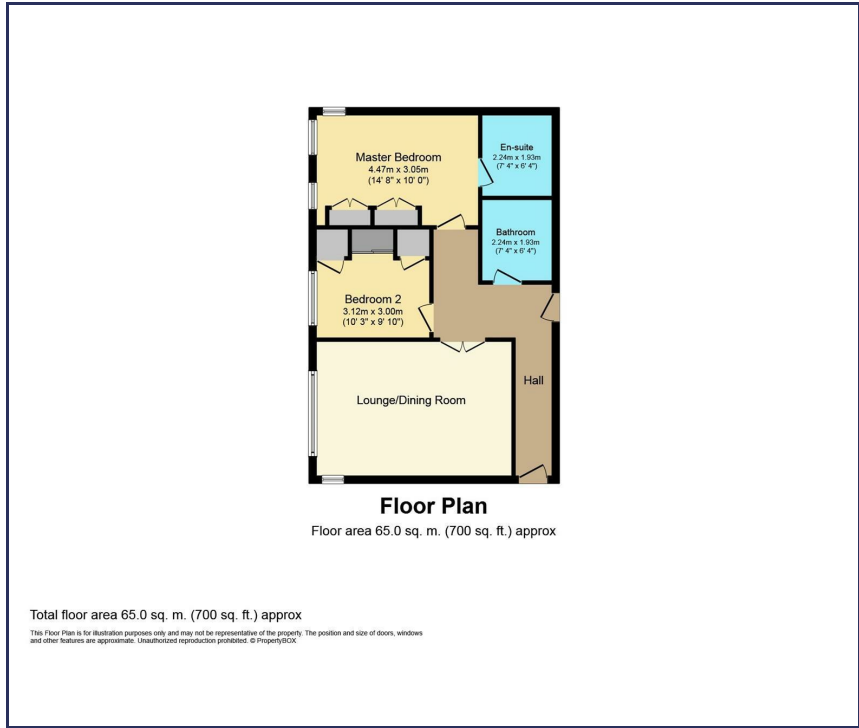
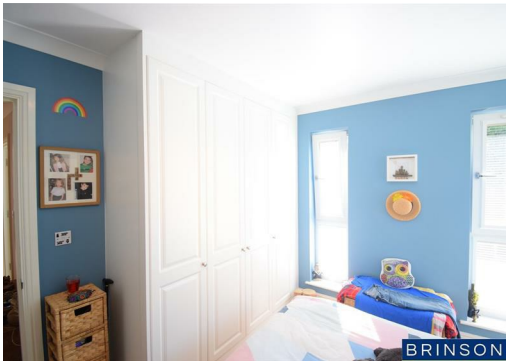


Flat D Castle Manor, Caerphilly, CF83 1BW
£190,000



Wow. A bright spacious 2 double bedroomed first floor apartment with a south facing aspect in this prestigious development of purpose built apartments close to a train link and the major road network. A stunning development of only 14 apartments offering energy efficient accommodation complimented by an electric heating system and A rated windows . The apartment also includes an en-suite, family bathroom, a 22' kitchen/lounge with integrated appliances(extensive LED lighting) and Sharps fitted wardrobes have been installed in both bedrooms. Externally are two parking spaces directly underneath the apartment and a communal patio area for residents to the rear. Owner occupiers also can have peace of mind by the fact that these cannot be rented out .

- First floor modern apartment
 - 2 double bedrooms (both iftted)
 - EPC: C
 - Open plan kitchen/sitting room
 - Communal patio area
- Larger than average accommodation
 - En-suite shower room
 - Spacious bathroom
 - Lift in building
 - 2 parking spaces



Energy Efficiency Rating		
	Current	Potential
Very energy efficient - lower running costs		
(92 plus) A		
(81-91) B		
(69-80) C	76	76
(55-68) D		
(39-54) E		
(21-38) F		
(1-20) G		
Not energy efficient - higher running costs		
England & Wales	EU Directive 2002/91/EC	

You may download, store and use the material for your own personal use and research. You may not republish, retransmit, redistribute or otherwise make the material available to any party or make the same available on any website, online service or bulletin board of your own or of any other party or make the same available in hard copy or in any other media without the website owner's express prior written consent. The website owner's copyright must remain on all reproductions of material taken from this website.

