



**Sandringham Road, London
NW2 5EJ**

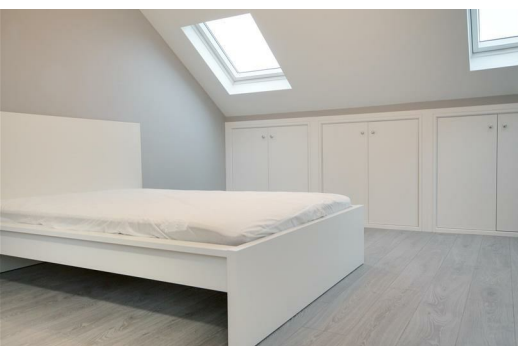
£790 Per Calendar Month


Double Room Located in Willesden Green | Spacious | Suitable for single or couples

This good size double room benefits from grey wooden flooring, brand new furniture such as double bed, wardrobe, chest of drawers and new en-suite bathroom with shower cubicle, WC and washbasin as well as a brand new shared fitted kitchen.

All bills inclusive such as electric, gas, wifi internet, council tax, water bills.

Early viewings are highly advised.



Energy Efficiency Rating		
	Current	Potential
<i>Very energy efficient - lower running costs</i>		
(92 plus) A		
(81-91) B		
(69-80) C		
(55-68) D		
(39-54) E		
(21-38) F		
(1-20) G		
<i>Not energy efficient - higher running costs</i>		
England & Wales	EU Directive 2002/91/EC	

Environmental Impact (CO ₂) Rating		
	Current	Potential
<i>Very environmentally friendly - lower CO₂ emissions</i>		
(92 plus) A		
(81-91) B		
(69-80) C		
(55-68) D		
(39-54) E		
(21-38) F		
(1-20) G		
<i>Not environmentally friendly - higher CO₂ emissions</i>		
England & Wales	EU Directive 2002/91/EC	