



17 Pippins Court, Ashford, TW15 2AF

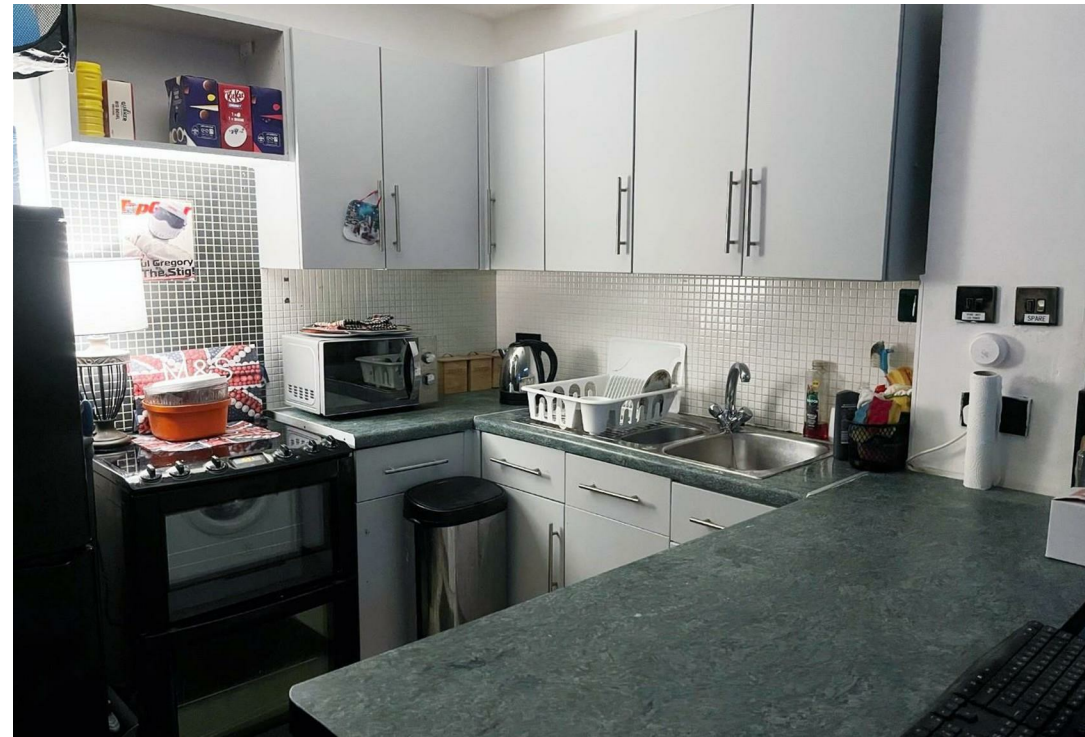
£250,000



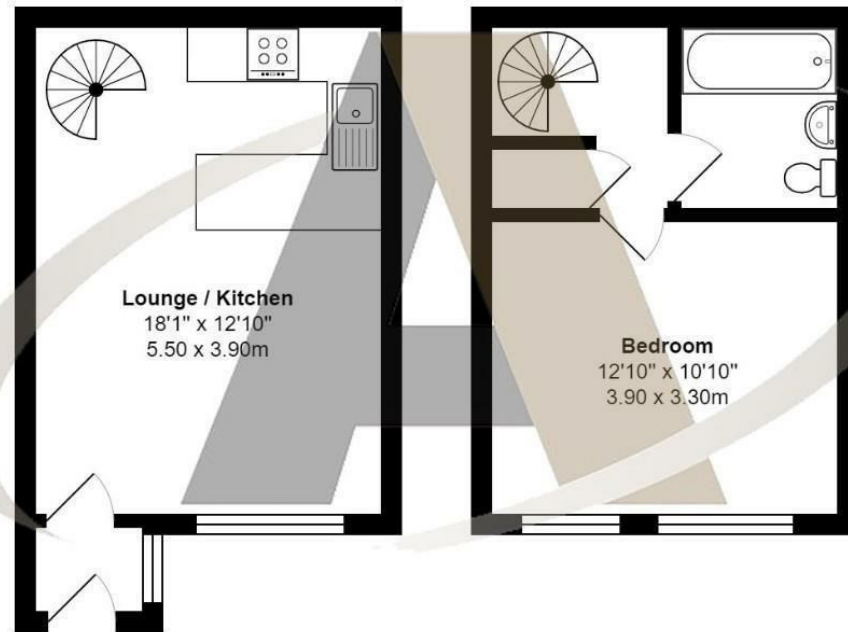
## 17 Pippins Court, Ashford, TW15 2AF

Nestled in a quiet cul-de-sac, this charming freehold one-bedroom house offers a fantastic opportunity for first-time buyers, downsizers, or investors alike. Ideally located within walking distance of local shops and convenient bus routes, the property combines peaceful surroundings with everyday practicality. The home features its own private front garden, perfect for enjoying a morning coffee or a touch of greenery, along with allocated parking, making day-to-day living that much easier.

Inside, the accommodation is both bright and well-proportioned, boasting an open-plan layout downstairs that provides a versatile space for relaxing or entertaining. Upstairs, a good-sized double bedroom offers a quiet retreat, complemented by ample natural light and room for storage. Offered to the market with no onward chain, this low-maintenance home is ready to move into and presents a rare opportunity in a sought-after location. Please call the vendors chosen sole agents at Aspen Estate Agents.



## Floor Plan



## Pippins Court, Ashford

Total Area: 476 ft<sup>2</sup> ... 44.2 m<sup>2</sup>

All measurements are approximate and for display purposes only



## Features

- One Bedroom House
- Modern Bathroom
- Good Size Lounge
- Cul De Sac Location
- Modern Kitchen
- Double Bedroom
- Allocated Parking Space

Aspen Residential Services  
77 Church Road, Ashford, Surrey, TW15 2PE  
Tel: 01784 252 202  
Email: [enquiries@aspensalesandlettings.com](mailto:enquiries@aspensalesandlettings.com)



Tenure - Freehold Council Tax Band - C



