



18 Ashford Close, Ashford, TW15 3JU

£575,000

18 Ashford Close, Ashford, TW15 3JU

Situated within the sought-after location of Ashford Close in Ashford, this charming semi-detached property presents an exceptional opportunity for comfortable family living. Boasting recent refurbishments by the current owners, this delightful three-bedroom home epitomizes modern comfort and style, it is evident that no expense has been spared. The ground floor unveils a beautifully appointed, contemporary kitchen exuding sophistication and functionality. The spacious lounge area offers a warm and inviting atmosphere, perfect for both relaxation and entertaining, while the addition of a conservatory offers an additional reception room overlooking the beautiful garden.

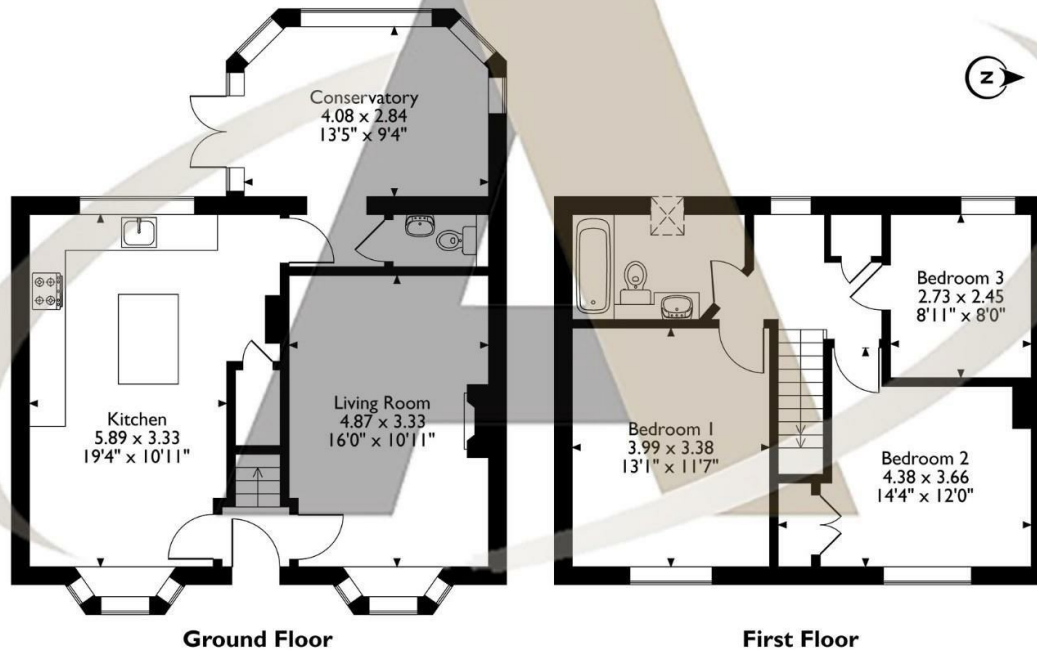
Upstairs, there are three generously sized bedrooms and a stunning family bathroom. Outside, the property exudes charm with a well-maintained and private rear garden, The convenience of off-street parking, accommodating at least two vehicles. Ashford Close is a popular residential location close to schools, transport links, and local amenities all of which are just a short walk away.

This property is likely to attract a lot of interest and prompt viewings are encouraged. Viewings can be booked by calling Aspen Estate Agents.



Floor Plan

18 Ashford Close, Ashford, Surrey
Approximate Gross Internal Area
102 Sq M/1098 Sq Ft



Please note that the location of doors, windows and other items are approximate and this floorplan is to be used for illustrative purposes only. Unauthorized reproduction is prohibited.



Features

- 3 Bedroom Semi-Detached House
- Beautiful Kitchen
- Modern Bathroom
- Large Lounge & Conservatory
- Pretty Rear Garden
- Off Street Parking
- Popular Residential Location

Aspen Residential Services
77 Church Road, Ashford, Surrey, TW15 2PE
Tel: 01784 252 202
Email: enquiries@aspensalesandlettings.com



Tenure - Freehold Council Tax Band - D

