



5 Seaton Drive, Ashford, TW15 3ET

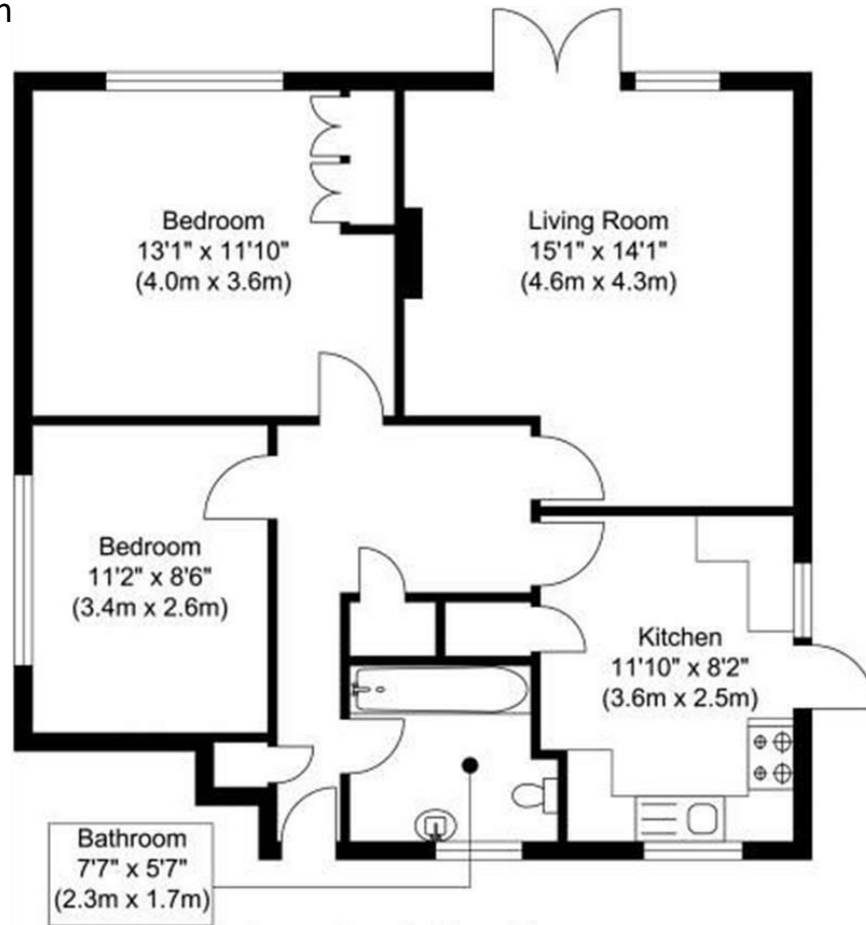
£1,300 Per Month

5 Seaton Drive, Ashford, TW15 3ET

Aspen are delighted to welcome to the market this spacious maisonette situated on an attractive cul-de-sac within walking distance to Ashford town and station. The property benefits from two double bedrooms, kitchen/breakfast room, white bathroom suite, lounge/diner with direct access to a private garden with patio area, garage and off street parking. Available immediately!



Floor Plan



Approximate Floor Area
720.10 sq. ft.
(66.90 sq. m)

Seaton Drive

Whilst every attempt has been made to ensure the accuracy of the floor plan contained here, measurements of doors, windows, rooms and any other items are approximate and no responsibility is taken for any error, omission, or mis-statement. This plan is for illustrative purposes only and should be used as such by any prospective purchaser or tenant. The services, systems and appliances shown have not been tested and no guarantee as to their operability or efficiency can be given.
www.virtu360.net



Features

- Off street parking
- Close to station
- Garage
- Private garden

Aspen Residential Services
77 Church Road, Ashford, Surrey, TW15 2PE
Tel: 01784 252 202
Email: enquiries@aspensalesandlettings.com

